



**Models:
NCO3
NCO5, NCO5V**

Revised: 01-27-2020

Model NCO3 & NCO5

Half-Size Electric Convection Oven

| | |
|-----------------------------|---|
| Unpacking | 1 |
| Maintenance | 1 |
| Installation | 2 |
| Operating Instructions..... | 3 |
| Parts List | 4 |
| Electrical Schematic | 5 |
| Warranty | 6 |

UNPACKING -

Examine the interior of the unit to make sure all packing materials are removed before the unit is plugged into an electrical outlet. Examine the interior and exterior to determine whether any damage was incurred during delivery. If so, notify the carrier immediately to file a damage claim. All NU-VU equipment is carefully tested and inspected prior to shipment. When accepted for delivery by carrier, the responsibility for safe arrival at the destination is assumed by the carrier.

CAUTION:

Should any damage be found, do not attempt to operate the unit. Call your dealer immediately to arrange for service.

MAINTENANCE -

The equipment has been designed to require minimum maintenance and has been constructed to meet industry electrical safety and sanitation standards.

Non-toxic chemical cleaners or mild detergents are recommended for cleaning of fixtures. Do not use steel wool of any kind. Steel wool particles will work into the grains of the metal causing corrosion. Also, these particles can cause a health hazard. Should scouring be required, use a non-abrasive type of cleaner. Do not use caustic solutions on your equipment. Hosing or steaming should not be necessary to keep these fixtures clean and sanitary. Do not allow water or steam to come into contact with electrical components.

CAUTION:

Be sure to disconnect power source and allow oven to cool before cleaning and servicing the unit. Liability for improper or careless use is the responsibility of the equipment owner or persons servicing the unit, including the authorized service agent.

INSTALLATION –

Only The NCO5V can be install ventless with the Optional factory Ventless system install The (V) suffix will be part of the model name on the plate to be install ventless

Ventless Testing have been conducted in accordance with EPA Methods 202 (Referencing Methods 1, 2, 3B, 4, 5). These test were performed on January 30, 2019 by Intertek using raw protein. Results are used to determine compliance with Section 59 of UL710 B, the Standard for Recirculating Systems. The emission test results after 8 hrs. Were equal to 4.237 mg/m³, anything above 5 mg/ m³ requires ventilation.

The ovens must be installed with a proper ventilation according with the local building code.

Attach the Appliance Legs to the base of the unit if your Oven will sit on a table or counter. Legs are not necessary if the unit is to be fastened and sealed to the table or counter surface. Move the unit into the position where it is to be operated. Check to determine that the power source is the same voltage and phase as that indicated on the label on the side of the unit; if the voltage and/or phase is not the same call NU-VU for instructions on changing the voltage and/or phase of your equipment.

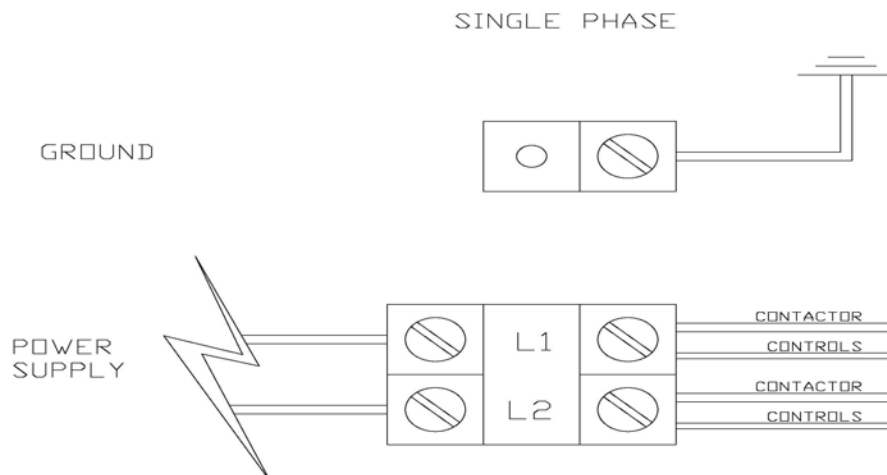
The NU-VU NCO5 is normally equipped for either 208 volt or 240 volt operation in single phase configurations. The NU-VU NCO3 comes with a factory installed cord and plug for 120 volt operation. A NEMA 5-20 receptacle is required to power the NCO3 using the factory supplied cord and plug.

IMPORTANT: DO NOT INSTALL UNIT IF THE POWER SOURCE DOES NOT COINCIDE WITH THE UNIT LABEL!!!

Connect your unit according to all national and local electrical codes, either through a plug-type connection or direct wiring. All connections must be made with COPPER WIRE ONLY in the correct gauge for the application. Provide enough slack in the wiring to allow for equipment to be moved about during the initial installation, and any future maintenance or required service work.

Your qualified installer or electrician should remove the Side Access Panel of the unit to expose the Power Terminal Block connections. A copy of the unit's wiring schematic is attached to the inside of the unit near the power terminal connections as well as in this manual.

IMPORTANT: ALL POWER SHOULD BE TURNED OFF AT THE WALL BREAKER WHILE THE UNIT IS BEING CONNECTED!!!



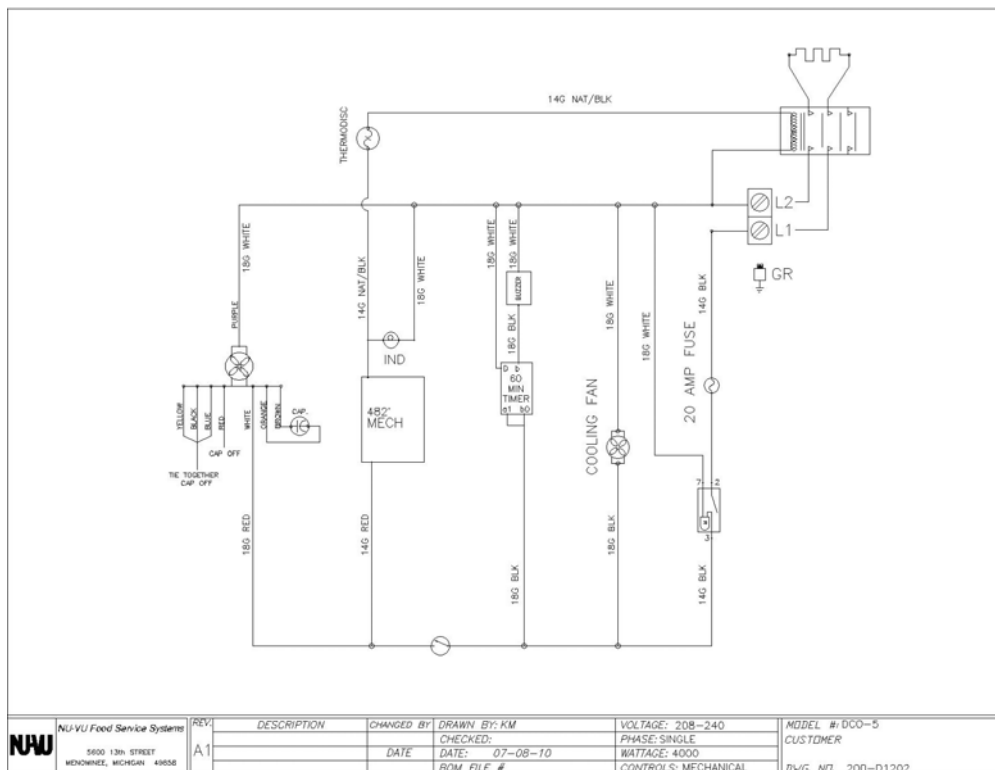
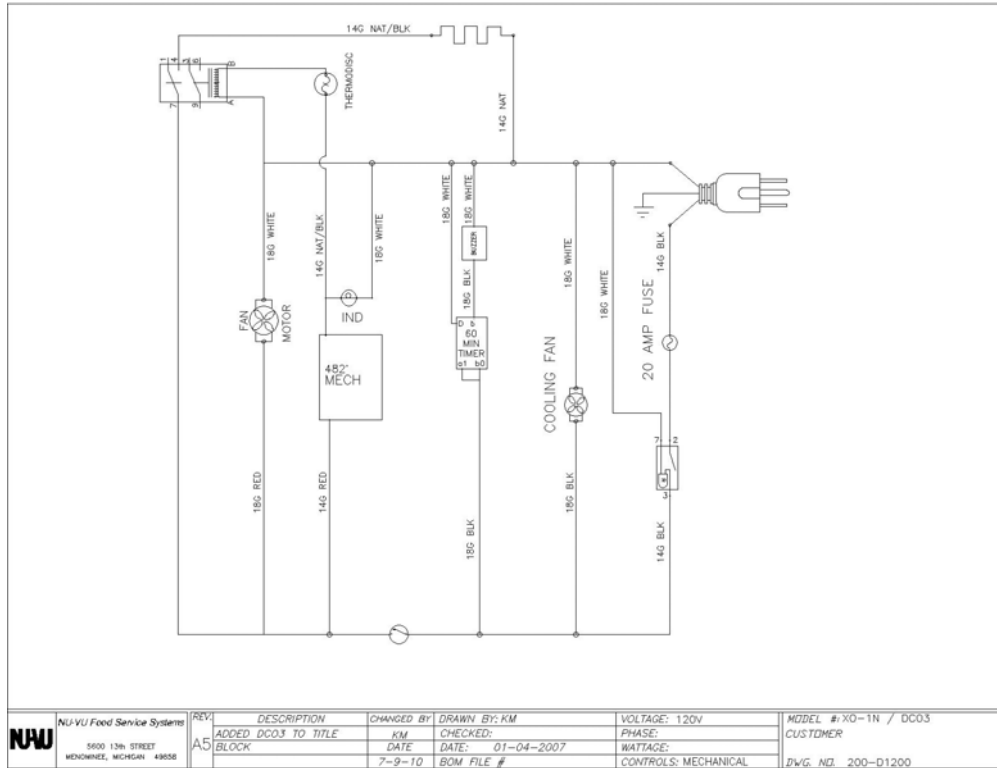
OPERATING INSTRUCTIONS -

1. Close oven door and push ON/OFF rocker switch to “ON” position. Blower and Elements will not operate if the door is open.
2. Turn thermostat knob to desired temperature setting and allow oven to preheat. The indicator light will go out when the set temperature has been reached.
3. For best results, allow oven to preheat for 15 – 20 minutes after oven has reached set temperature when first turned on or after it has been off for an extended period of time.
4. Load product, close oven door and set timer to desired time by turning the knob clockwise past the desired time and then counter-clockwise to the desired time. The alarm will sound after the timer has counted down. To silence the alarm, turn timer knob fully counter-clockwise.

PARTS LIST FOR NCO3 & NCO5

| <u>ITEM</u> | <u>DESCRIPTION</u> | <u>PART NUMBER</u> |
|-------------|----------------------------------|--------------------|
| 1 | On\Off Switch (NCO3) | 50-1355 |
| 1 | On\Off Switch (NCO5) | 66-3008 |
| 2 | Thermostat | 66-1159 |
| 3 | Thermostat Knob | 50-0727 |
| 4 | 60 Minute Timer (NCO3) | 50-1094-B |
| 4 | 60 Minute Timer (NCO5) | 66-1116 |
| 5 | Timer Knob | 50-1277 |
| 6 | Blower and Motor Assembly (NCO3) | 250-1059 |
| 6 | Blower and Motor Assembly (NCO5) | 250-1066 |
| 7 | Pilot Light (NCO3) | 50-0029-A |
| 7 | Pilot Light (NCO5) | 50-0030 |
| 8 | Alarm | 252-1022 |
| 9 | Hi-Limit Switch | 66-1047 |
| 10 | Cord Set (NCO3) | 50-0375 |
| 11 | Heating Element (NCO3) | 60-0205 |
| 11 | Heating Element (NCO5) (208V) | 60-0208 |
| 11 | Heating Element (NCO5) (240V) | 60-0209 |
| 12 | Resetable Fuse | 66-1097 |
| 13 | Terminal Block Section (NCO5) | 50-1332 |
| 14 | Ground Lug (NCO5) | 50-1329 |
| 15 | Heating Relay (NCO3) | 50-0433 |
| 15 | Heating Contactor (NCO5) | 66-2017 |
| 16 | Cooling Fan Assembly (NCO3) | 50-0544 |
| 16 | Cooling Fan Assembly (NCO5) | 888-5010 |
| 17 | Door Switch Assembly | 252-2004 |
| 18 | Side Rack (NCO3) | 98-1342 |
| 18 | Side Rack (NCO5) | 98-1315 |
| 19 | Side Rack Mounting Pin | 700-0016 |
| 20 | Door Latch | 50-1360 |
| 21 | Door Latch Strike Assembly | 98-9439 |
| 22 | Door Assembly (NCO3) | 98-9438 |
| 22 | Door Assembly (NCO5) | 98-9436 |
| 23 | Door Gasket Assembly (NCO3) | 70-0369 |
| 23 | Door Gasket Assembly (NCO5) | 70-0370 |
| 24 | Fan \ Element Cover (NCO3) | 98-1343 |
| 24 | Fan \ Element Cover (NCO5) | 98-1320 |
| 25 | Hinge Set | 50-1270 |
| 26 | 4" Adjustable Leg (NCO3) | 1523B8301 |
| 26 | 4" Adjustable Leg (NCO5) | 50-0628 |

Electrical Schematic NCO3 & NCO5 Half-Sized Electric Convection Oven





EQUIPMENT WARRANTY

NU-VU warrants to the initial purchaser that all NU-VU products shall be free from defects in material or factory workmanship, under ordinary use for the purpose for which it is designed, for a period of one (1) year from the date of shipment from the manufacturing facility. At our option, any equipment will be repaired or a replacement part furnished FOB our factory. This Warranty includes one (1) year labor from the date of said shipment.

Return of component parts will not be accepted for credit without prior authorization by our service department, and then contingent upon our inspection. This Warranty will not apply if, after examination, it is determined that the equipment or any part thereof is found to be defective through purchaser's lack of responsibility for maintenance or storage, shipping damage, accidental damage by moving or otherwise, improper voltage, misapplication or alteration by other than ourselves, or use of unauthorized parts. This Warranty does not apply to glass, light bulbs, or gaskets.

Prior to any service agency performing warranty labor, the NU-VU service department must be contacted to provide service authorization. Toastmaster assumes no responsibility for any charges that were not expressly authorized by it for any charges that exceed, in the sole judgment of NU-VU, normal and customary amounts. If service is required during overtime, the difference between overtime and standard labor rates shall be paid by the purchaser.

This Warranty does not apply if payment has not been received for the equipment at the time a claim is made or if the NU-VU serial number has been removed.

WARRANTY EXCLUSIONS AND LIMITATIONS

This Warranty applies only within the United States and Canada. **ANY IMPLIED WARRANTY OF MERCHANTABILITY OR FITNESS FOR A PARTICULAR PURPOSE IS HEREBY SPECIFICALLY DISCLAIMED BY DOYON.** There are no warranties, expressed or implied, which extend beyond the description on the face thereof.

This warranty does not cover, and NU-VU shall not under any circumstances be liable for, any incidental, consequential or other damages (such as injury to persons or property, loss of time, inconvenience, loss of use, loss of business or profits, or other matters not specifically covered) arising in connection with the use of, inability to use, or failure of these products.

NU-VU Foodservice Systems Inc.
5600 13th Street
Menominee, MI 49858
1-800-338-9886