



GLOBE FOOD EQUIPMENT COMPANY

Electric Countertop Griddles

CPG24 / CPG36

Project

Item #

Quantity



CPG24



CPG36



# Electric Countertop Griddles

*Globe.*  
*The ULTIMATE in*  
*Countertop Equipment*

### Model

- CPG24 - 24" Electric Countertop Griddle
- CPG36 - 36" Electric Countertop Griddle



### Standard Features

- Available in 2 lengths: 24" and 36" both with 13" depths
- Two 70°F – 575°F Thermostats
- Easy On/Off switch for each element
- 3½" stainless steel adjustable feet
- Removable, easy-to-clean, stainless steel catch tray (4½ cup capacity)
- Griddle plates welded to stainless steel frame
- 3/8" plate thickness
- 2¾" wide grease trough
- 3½" splash guard
- 208/240V, 4-foot power cord and plug standard on CPG24 only

### Standard Accessories

- Stainless Steel Catch Tray

### Applications

- Designed for entry level and lighter duty cooking applications
- Smaller service for limited breakfast, lunch or dinner menu items

### Standard Warranty

- Onsite Warranty:  
One-year parts and labor or replacement

Approved By: \_\_\_\_\_

Date: \_\_\_\_\_



**GLOBE FOOD EQUIPMENT COMPANY**

[www.globeslicers.com](http://www.globeslicers.com)

2153 Dryden Rd.  
Dayton, OH 45439  
Phone: 937-299-5493  
Phone: 800-347-5423  
Fax: 937-299-4147



# Electric Countertop Griddles CPG24 / CPG36

## For Indoor Use Only

### Electrical:

CPG24: 208-240V  
2.7/3.6KW 13/15amps

CPG36: 208-240V  
4.05/5.4KW 19.5/22.5amps

### Griddle Top Cooking Space:

CPG24: griddle area 23.8" x 13"  
(60.5cm x 33cm)

CPG36: griddle area 35.8" x 13"  
(91cm x 33cm)

**Cord and Plug:** 4-foot flexible, three-wire cord with ground plug (CPG24 only 6-20P).  
**(CPG36 MUST be hard wired)**

**Thermostats:** The temperature is thermostatically controlled. Griddle is equipped with one thermostat per various cooking service interval. For the 24" griddle - every 12", for the 36" griddle - every 18".

## Specifications

**Consistent Heating:** Griddle will maintain a constant, selected temperature to ensure product consistency.

**Standard Equipment:** Standard equipment includes the electric griddle and easy-to-remove catch tray.

**Catch tray:** Continuously collects grease and crumbs while cooking on the griddle.

**CPG24 Dimensions:**  
Foot Print = 17" x 24.6"  
(41.2 cm x 62.5 cm)  
Overall Length = 24.6" (62.5 cm)  
Overall Width = 17" (41.2 cm)  
Overall Height = 11.3" (28.7 cm)

**CPG36 Dimensions:**  
Foot Print = 19.3" x 36"  
(48.3 cm x 91.4 cm)  
Overall Length = 36" (91.4 cm)  
Overall Width = 19.3" (48.3 cm)  
Overall Height = 11.3" (28.7 cm)

## SHIPPING:

**CPG24 Shipping Information:**  
Net Weight: 63.4 lbs (28.8 kg)  
Shipping Weight: 68 lbs (31 kg)

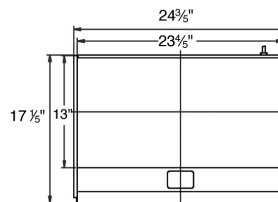
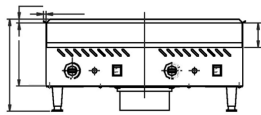
**CPG24 Shipping Dimensions:**  
22"W x 29"D x 13.2"H  
(55.9 cm x 73.7 cm x 33.5 cm)

**CPG36 Shipping Information:**  
Net Weight: 88.8 lbs (40.3 kg)  
Shipping Weight: 130 lbs (60 kg)

**CPG36 Shipping Dimensions:**  
21.3"W x 39.6"D x 16"H  
(54.1 cm x 100.6 cm x 40.6 cm)

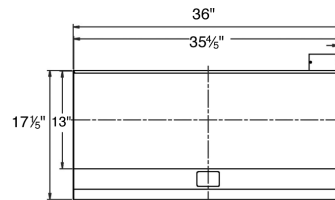
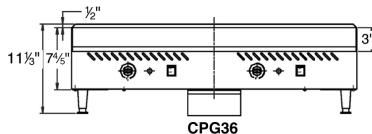
Cartons are reinforced for shipping. The weight and dimensions of this reinforced carton are included above and may vary from shipment to shipment.

CPG24

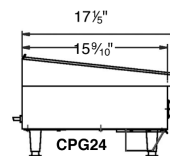
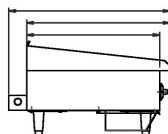


CPG24

CPG36



CPG36



CPG24



**GLOBE FOOD EQUIPMENT COMPANY**

[www.globeslicers.com](http://www.globeslicers.com)

2153 Dryden Rd.  
Dayton, OH 45439  
Phone: 937-299-5493  
Phone: 800-347-5423  
Fax: 937-299-4147

Printed in U.S.A. 08-2010

Specifications are subject to change without notice.