



# MAESTRO SERIES

MODULAR  
ICE MACHINE

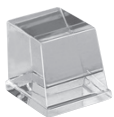
## IM-2000-A/W/R

**AIR COOLED**

**KEY FEATURES:**

- Up to 2032 lbs production capacity (70F/50F, 24 Hours)
- 304 stainless-steel exterior (durable & rust-resistant) Simple diagnostic panel to assist service & maintenance
- Cleaning switch for auto cleaning cycle
- Magnetic & cleanable condenser air filter
- Adjustable flush time to reduce scale & cleaning cost
- ABS antimicrobial interior to reduce slime & cleaning cost
- Water distributor tube & water sump removed w/o tools
- Heavy duty water curtain, pins & hangers for easy removal
- Hinged front doors for easy access
- Split front panel requires less space to access food zone
- Side panel screws easily removed from front of machine
- Louvers on both sides & top for optimal ventilation
- Improved evaporator section to reduce airborne bacteria
- R-410A refrigerant

**ICE SHAPE:** Cube & Half Cube



C: Cube  
7/8" x 7/8" x 7/8"  
(2.22 x 2.22 x 2.22 cm)



H: Half Cube  
3/4" x 1 1/8" x 7/8"  
(.95 x 2.86 x 2.22 cm)

**STANDARD WARRANTY:**

- Ice Maker: 3-Year Parts & Labor
- Evaporator: 5-Year Parts & Labor
- Compressor: 5-Year Parts & 3-Year Labor

**CERTIFICATIONS**



IM-2000-AH shown with IB-085-48

**Remote Condenser:**

Remote condenser for IM1700-R and IM2000-R remote units: IRC-2000 (sold separately)



**Remote Unit Line Sets:**

- IRT-20R410A 20' line set
- IRT-35R410A 35' line set
- IRT-50R410A 50' line set

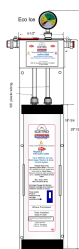
**Bin-Stat Kit IBO-150KIT**

Recommended when ice machine is installed on soda dispenser.



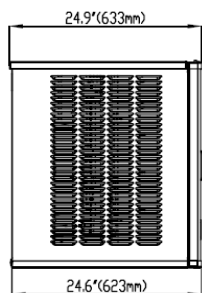
**Recommended Water Filtration:**

IcePro 2500 (replacement cartridge: IcePro 2500R)

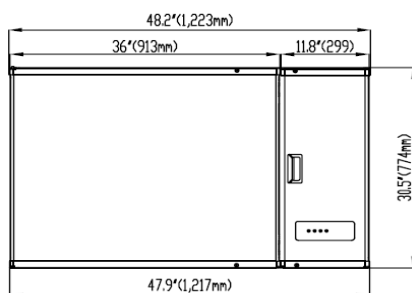


Extended Warranty Program when you install and register IcePro 2500 water filtration with IM-1700-AC/AH. For more information, visit [www.icetroamerica.com/registration](http://www.icetroamerica.com/registration).

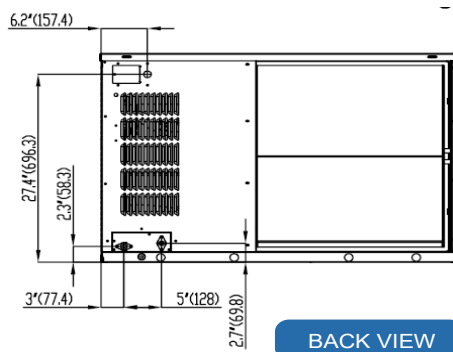
## PLAN VIEW IM-2000-AC/AH (MACHINE HEAD)



SIDE VIEW

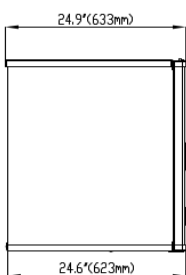


FRONT VIEW

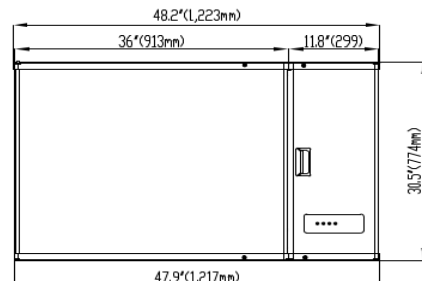


BACK VIEW

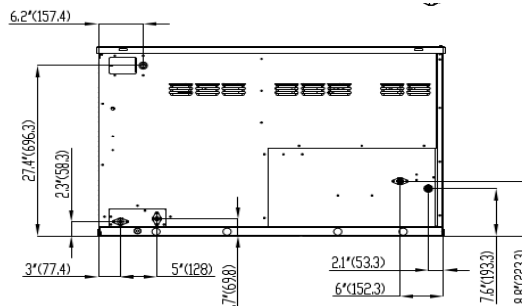
## PLAN VIEW IM-2000-WC/WH (MACHINE HEAD)



SIDE VIEW



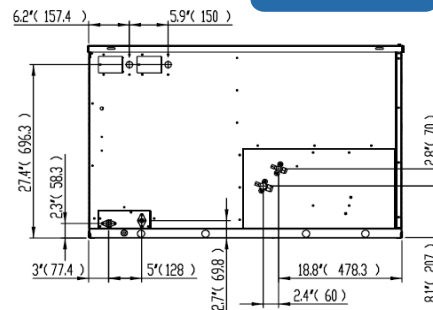
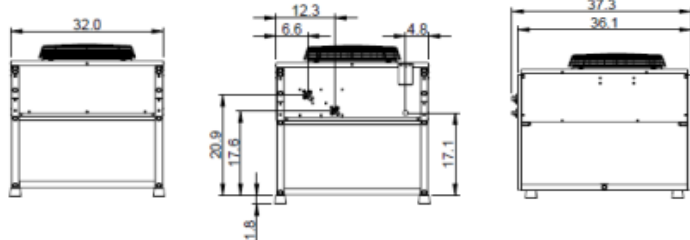
FRONT VIEW



BACK VIEW

## PLAN VIEW IM-2000-RC/RH

(IRC-2000 condenser, back view [side and front same as AC/AH])



BACK VIEW

## Specifications

Dimensions	Width	Depth	Height	Weight
IM-2000 Machine	48"	24.5"	30.4"	322 lbs (Net) 366 lbs (Shipping)
IRC-2000 Condenser*	37.3"	32"	27.1"	143 lbs (Net) 195 lbs (Shipping)

	Model	Ice Shape	Ice Production 24 Hours		Power Usage kWh/100 lbs. @90°Air/70°F	Potable Water Usage/100 lbs. 45.4 kgs. of Ice
			70°Air/ 50°F Water	90°Air/ 70°F Water		
AIR COOLED	IM-2000-AC	cube	1 ph	1 ph	4.24	14 Gal.
			2032 lbs	1708 lbs		
	IM-2000-AH	half-cube	1 ph	1 ph	4.24	14 Gal.
			2032 lbs	1708 lbs		
	WATER COOLED	IM-2000-WC	cube	1 ph	1 ph	3.51
2006 lbs				1821 lbs		
IM-2000-WH		half-cube	1 ph	1 ph	3.51	14 Gal.
2006 lbs	1821 lbs					
REMOTE COOLED	IM-2000-RC	cube	1 ph	1 ph	4.04	14 Gal.
			1980 lbs	1730 lbs		
	IM-2000-RH	half-cube	1 ph	1 ph	4.04	14 Gal.
			1980 lbs	1730 lbs		
			900 kgs	786 kgs		

*IRC-2000 condenser ordered separately for remote-cooled units*

\* IRC condenser sold separately for remote version.

