



GAS

SPEC SERIES | OPEN BURNERS AND HOT TOPS COMBINATIONS

IMPERIAL



IHR-2-1HT

Shown with optional stainless steel backguard with shelf.

OPEN BURNERS

- Anti-clogging burner
- 35,000 BTU/hr (10 KW) output with 7,000 BTU/hr low simmer feature.
- One piece Venturi base has no gaskets. Venturi slopes down to the burner creating more efficient heating
- Cast-Iron burners remove and separate for cleaning
- All stainless-steel tubing and solid brass components for a long service life

GRATES

- S Grates are standard on all units, optional spider grates are available
- Grates measure 12" x 14" (305 x 356 mm) or 18" x 14" (457 x 356 mm) depending on model.
- 2 piece cast iron design features flame shaping center bowl for more efficient heat transfer
- Anti-Clogging shield design into the grate protects the pilot from grease and debris

HOT TOPS

- Two heavy duty, highly polished tops provide even heat across entire surface
- Plates measure 18" W X 28"D (457 X 711 mm)
- "U" Shaped burners have 40,00(12kw) BTU output
- Aeration baffles between burners speed recovery time
- Burners are located every 18" (457 mm) with one manual control per burner
- Each burner has one adjustable gas valve and one standing pilot

Model Numbers

IHR-2-1HT	IHR-2HT-2
IHR-2-1HT-C	IHR-2HT-2-C
IHR-2-1HT-XB	IHR-2HT-2-XB
IHR-2-1HT-M	IHR-2HT-2-M
IHR-4-1HT	IHR-3HT-3
IHR-4-1HT-C	IHR-3HT-3-C
IHR-4-1HT-XB	IHR-3HT-3-XB
IHR-4-1HT-M	IHR-3HT-3-M

STANDARD OVEN

- 40,000 BTU/hr (12KW) oven with 100% safety pilot and manual shut off valve
- Unique burner baffle distributes heat flow to provide even temperatures throughout the oven cavity
- Exclusive heat deflector reflects heat into the oven, not the floor
- Chef Depth interior is 26 ½" W x 26" D x 14" H (673 x 660 x 356 mm) and accommodates 18" x 26" (457 x 660) sheet pans left-to-right and front-to-back
- Porcelainized sides, rear, deck and door lining for easy cleaning.
- Superior heavy-duty door hinge
- Side oven controls are protected in the cool zone
- One chrome oven rack is included.
- Optional stainless steel oven interior
- Optional high mass oven with cast iron oven interior and 650 degree thermostat

CONVECTION OVEN

- 35,000 BTU/hr (1KW) Convection oven with ½ HP blower motor cooks products quickly and evenly with less shrinkage
- Electronic ignition system with Radiant solenoid valves
- Convection oven interior dimensions 26 ½" W x 22 ½" D x 14" H (673 x 572 x 356 mm)
- Three positions switch for cooking or cool down. Fan shuts off automatically when the door is open
- Porcelainized sides, rear, deck and inner door liner for easy cleaning. Stainless steel door gasket
- Burner "ON" indicator light and one hour electronic timer
- Three chrome oven racks are included.

Dimensions:

36" w x 38" d x 36" h* (914 x 965 x 914 mm)
* to cooktop

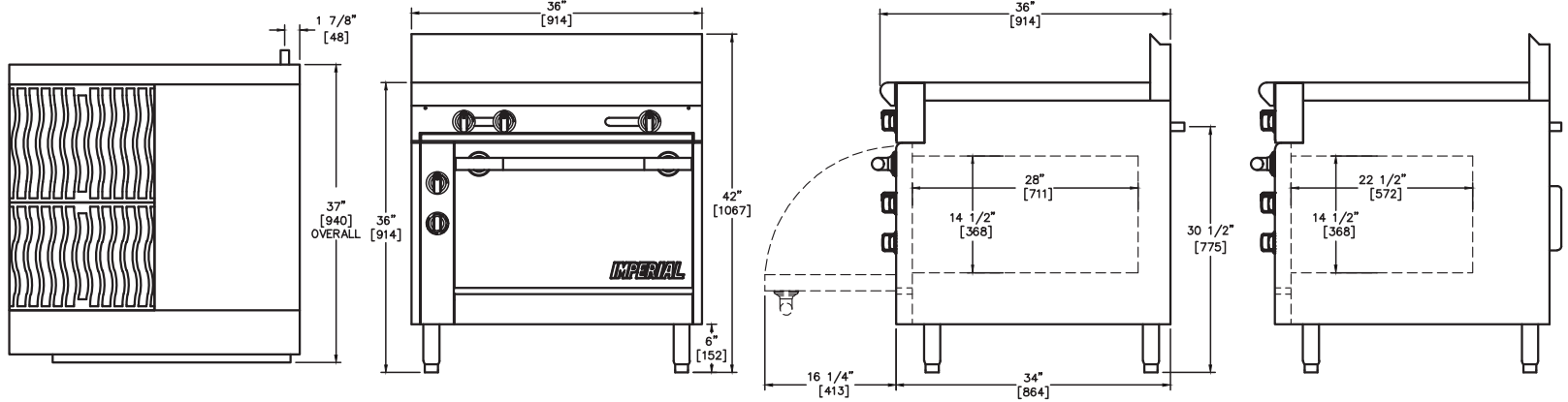
Crated Dimensions:

39-1/2" w x 41" d x 35" h (1003 x 1041 x 889 mm)
Measurements in () are metric equivalents.

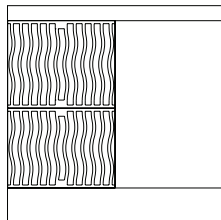


GAS

SPEC SERIES | OPEN BURNERS AND HOT TOPS COMBINATIONS

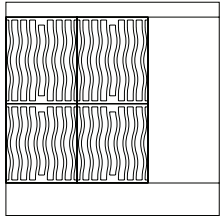


TWO 40,000 BTU OPEN BURNERS AND 18" EVEN HEAT HOT TOP



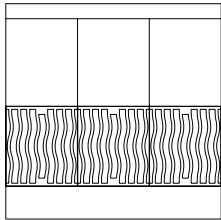
MODEL	GAS OUTPUT		OPEN BURNERS	HOT TOP WIDTH	SHIP WEIGHT	
	BTU	KW			KG	LBS
IHR-2-1HT	160,000	47	2	18" (457 MM)	346	762
IHR-2-1HT-C	155,000	45	2	18" (457 MM)	373	822
IHR-2-1HT-XB	120,000	35	2	18" (457 MM)	269	592
IHR-2-1HT-M	120,000	35	2	18" (457 MM)	190	417

FOUR 40,000 BTU OPEN BURNERS AND ONE 12" EVEN HEAT HOT TOP



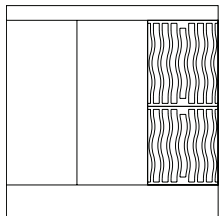
MODEL	GAS OUTPUT		OPEN BURNERS	HOT TOP WIDTH	SHIP WEIGHT	
	BTU	KW			KG	LBS
IHR-4-1HT	230,000	67	4	12" (305 MM)	342	752
IHR-4-1HT-C	225,000	66	4	12" (305 MM)	369	812
IHR-4-1HT-XB	190,000	56	4	12" (305 MM)	264	582
IHR-4-1HT-M	190,000	56	4	12" (305 MM)	185	407

THREE 12" COMBINATION 40,000 BTU OPEN BURNERS AND EVEN HEAT HOT TOPS



MODEL	GAS OUTPUT		OPEN BURNERS	HOT TOP WIDTH	SHIP WEIGHT	
	BTU	KW			KG	LBS
IHR-3HT-3	280,000	82	3	12" (305 MM)	348	767
IHR-3HT-3-C	275,000	81	3	12" (305 MM)	376	827
IHR-3HT-3-XB	240,000	70	3	12" (305 MM)	271	597
IHR-3HT-3-M	240,000	70	3	12" (305 MM)	192	422

TWO 18" EVEN HEAT HOT TOPS



MODEL	GAS OUTPUT		OPEN BURNERS	HOT TOP WIDTH	SHIP WEIGHT	
	BTU	KW			KG	LBS
IHR-2HT	120,000	35	2	12" (305 MM)	345	760
IHR-2HT-C	115,000	34	2	12" (305 MM)	372	820
IHR-2HT-XB	80,000	23	2	12" (305 MM)	268	590
IHR-2HT-M	80,000	23	2	12" (305 MM)	189	415

MANIFOLD PRESSURE		
NATURAL GAS	PROPANE GAS	MANIFOLD SIZE
5.0" W.C.	10.0" W.C.	3/4" (19 MM)

CONVECTION OVEN ELECTRICAL REQUIREMENT		
VOLTAGE	PHASE	AMPS
120	1	6

CLEARANCE REQUIREMENTS

For use only on non-combustible floors. Legs or casters are required for non-combustible floors; or 2" (51 mm) overhang is required when curb mounted. Provide 0" clearance from non-combustible surfaces and 8" (203 mm) from combustible surfaces.

Notes:

"C" specifies (1) 26-1/2" (673 mm) Convection Oven
 "M" specifies Modular, Counter Top Model

EXTERIOR

- Sleek European styling with wide radius ledge and optional high shelf
- Stainless steel front, sides, backguard, shelf, landing ledge and kick plate
- Welded and polished stainless steel seams
- Enclosed front 1-1/4" (32 mm) manifold
- Common ledges, backguards and shelves are available as options for a seamless, professional look
- Large 7" (178 mm) stainless steel landing ledge
- Unique cast aluminum control knobs feature a heat protection grip
- Full width, removable crumb tray for easy cleaning
- 6" (152 mm) high 2-1/2" (64 mm) diameter heavy duty legs with adjustable feet
- One year parts and labor warranty

OPTIONS AND ACCESSORIES

- Heavy duty stainless steel backguards
- Salamander or Cheesemelter Infra-red Broilers
- Reinforcement channels for mounting cheesemelter/salamander
- Stainless steel common front landing ledge 54", 72", 90", 108" (1372, 1829, 2286, 2743 mm)
- Stainless steel 10" (245 mm) wok ring, fits over open burner top grate
- Stainless steel interior and double doors on open cabinet base
- Stainless steel center shelf in open cabinet base
- Extra chrome racks
- 3/4" rear gas connection for single unit connection
- 1-1/4" rear gas connection batteries up to 600,000 BTU (176 KW)
- Gas shut off valve, 3/4" or 1-1/4", N.P.T.
- Gas pressure regulator, 3/4" or 1-1/4", N.P.T.
- Quick disconnect and flexible gas hose, 3/4" or 1-1/4", N.P.T.
- 6" (152 mm) casters



IMPERIAL