



Job _____ Item No. _____

Refrigerated Cold Pans Extra Capacity 4/3 Pans Models

RCP-143 RCP-243



Model RCP-243

DESCRIPTION

Wells Refrigerated Drop-In Cold Pans hold pre-chilled food products at cold, fresh and safe serving temperatures. All models are completely self-contained in one to two-well models with each well holding 4 each 1/3rd size pans with individual thermostatic controls, are CFC free and include an 8 ft. 120V cord and plug.

SPECIFICATIONS

Exterior – One-piece top flange and coved-corner interiors constructed of 18 gauge stainless steel. Exterior body constructed of heavy gauge, corrosion resistant steel. Condensing unit mounted on corrosion resistant frame below the cold pan.

Interior – CFC free foamed-in-place insulation through-out, 1” drain located in the center for easy cleaning and recessed ledge for pan support.

Refrigeration – Type 134A and type 404A CFC free refrigerant system featuring wrapped coil construction on both sides and bottom, individual thermostats, on/off switch, 8 ft. cord and plug set NEMA 5-15P (120V models). Refrigeration system features sight glass, easy service valves, dryer/filter and receiver. Condensing unit may be easily removed for service.

STANDARD FEATURES

- Complies with NSF-2 requirements
- Self contained drop-in design
- Each well holds 4 each 1/3rd size pans or equivalent fractional sized pans
- 18 gauge stainless steel top and liner for maximum strength and durability
- 1” drains for ease of cleaning
- On-off switch with 8 ft cord & plug for ease of installation and operation
- Type 134A refrigerant
- Fully insulated, CFC free, foamed-in place insulation keeps food cold while saving energy
- Recessed ledge for pan support and colder, fresher products
- Quick & easy service with sight glass, service valves, filter/dryer and receiver
- Limited 1 year parts & labor warranty

OPTIONS & ACCESSORIES

- Perforated bottom strainer plate conveniently holds ice above drain to prevent clogging
- Adapter bars for fractional sized pans
- 5-year compressor warranty
- 2nd year parts & labor warranty



2M-Z24890 REV A (03-22)



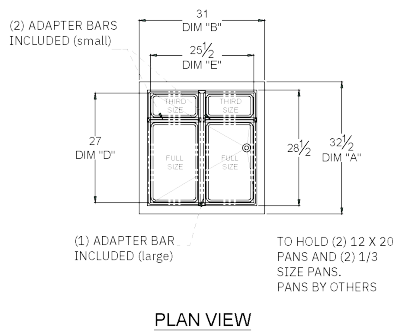
Wells Manufacturing • 265 Hobson Street • Smithville, Tennessee 37166 U.S.A.
Phone : (314) 678-6314 • Fax (314) 781-3636
www.wells-mfg.com • Printed in the U.S.A.

Specifications are subject to change without notice and are not intended for installation purposes. See installation instructions prior to installing the unit.

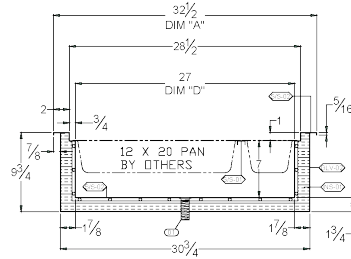


Refrigerated Cold Pans Extra Capacity 4/3 Pans Models

RCP-143 □ RCP-243



PLAN VIEW



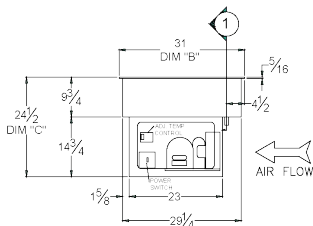
SECTION THRU

INCHES
MM

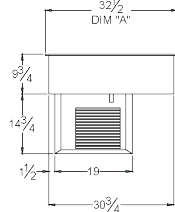
NOTE:
Specifications are subject to change without notice and are not intended for installation purposes. See Installation instructions prior to installing the unit.

RCP-243 Shown

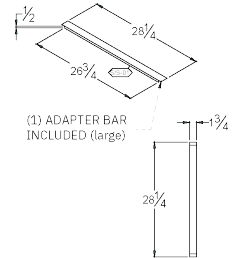
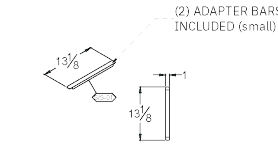
COUNTER CUTOUT:
29 1/2" (DIM "G") X 31" (DIM "F")



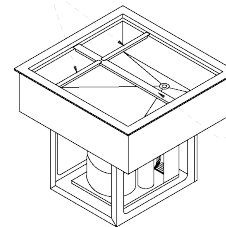
ELEVATION "A"



SIDE ELEVATION



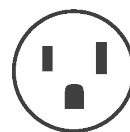
(2) ADAPTER BARS INCLUDED (small)



(1) ADAPTER BAR INCLUDED (large)

SPECIFICATIONS								SHIPPING INFORMATION							
Model Number	OVERALL DIMENSIONS			INTERIOR DIMENSIONS		CUT OUT DIMENSIONS		Model Number	WEIGHTS		CARTON DIMENSIONS			CRATE SIZE	
	A Front to Back Inches (MM)	B Left to Right Inches (MM)	C Height Inches (MM)	D Front to Back Inches (MM)	E Left to Right Inches (MM)	Width Front to Back Inches (MM)	Length Left to Right Inches (MM)		SHIPPING WEIGHT POUNDS (KG)	INSTALLED WEIGHT POUNDS (KG)	WIDTH Inches (MM)	DEPTH Inches (MM)	HEIGHT Inches (MM)	CUBIC FEET	CUBIC METERS
RCP-143	32-1/2 (825.5)	17-3/8 (442)	24-1/2 (623)	27 (686)	11-7/8 (302)	31 (788)	15-7/8 (404)	RCP-143	114 (52)	104 (47)	34-1/8 (867)	18-3/8 (467)	32 (813)	11.6	0.31
RCP-243	32-1/2 (825.5)	31 (788)	24-1/2 (623)	27 (686)	25-1/2 (648)	31 (788)	29-1/2 (750)	RCP-243	232 (105)	216 (98)	34-1/8 (867)	32 (813)	32 (813)	20.2	0.57

POWER SUPPLY						
Model Number	VOLTS	HP	AMPS	PHASE	POWER SUPPLY	Refrigerant
RCP-143	115	1/4	4.9	SINGLE	NEMA 5-15P	134A
RCP-243	115	1/4	4.9	SINGLE	NEMA 5-15P	134A



5-15P

Due to periodic changes in designs, methods, procedures, policies and regulations, the specifications contained in this sheet are subject to change without notice. While Wells exercises good faith efforts to provide information that is accurate, we are not responsible for errors or omissions in information provided or conclusions reached as a result of using the specifications. By using the information provided, the user assumes all risks in connection with such use.



Wells Manufacturing • 265 Hobson Street • Smithville, Tennessee 37166 U.S.A.
Phone : (314) 678-6314 • Fax (314) 781-3636
www.wells-mfg.com • Printed in the U.S.A.

Specifications are subject to change without notice and are not intended for installation purposes. See installation instructions prior to installing the unit.