



Simply Engineered Better

## Model 301HT

Undercounter High Temperature  
Dishwashing Machine  
with Built-in Booster Heater



### SPECIFIER STATEMENT

Specified unit will be Moyer Diebel 301HT undercounter high temperature dishwashing machine with built-in booster, maximum 13" door opening clearance, standard liquid detergent & rinse-aid dispensing pumps, top and side panels. Unit will have standard pumped drain and rinse-sentry feature to ensure proper 180°F final rinse temperature. Optionally, if required, unit will be supplied in 208-240/60/3 voltage.



Project \_\_\_\_\_  
Item No. \_\_\_\_\_  
Quantity \_\_\_\_\_

### STANDARD FEATURES

- Stainless steel, upper and lower wash and rinse arms.
- Fresh, final rinse water replenishes wash tank water.
- **Rinse-sentry feature.** Ensures proper 180°F/82°C final rinse temperature.
- **Standard** liquid detergent & rinse-aid dispensing pumps.
- Top and side panels.
- Wash tank heater maintains water at required temperature.
- Standard pumped drain, flexible fill and drain lines and standard line strainer for total ease of installation.
- Low .74 US gal. (0.62 imp gal/2.9L) water usage per rack.
- 150 second cycle time. 20 racks per hour capacity.
- 13" [330mm] door opening accommodates cafeteria trays.
- Energy efficient - only 20 or 30 Amp. breaker required for 40°F/22°C rise.
- Complete with two 20" x 20" [508mm x 508mm] racks (one peg and one flat bottom).
- Pressure regulating valve (PRV)
- One year parts and labor warranty.

301HT UNDERCOUNTER DISHWASHER

### OPTIONS & ACCESSORIES

- |   |             |
|---|-------------|
| <input type="checkbox"/> 70°F/39°C rise booster                       | P/N 0710714 |
| <input type="checkbox"/> CST- Combination sink/table Machine on right | P/N 180374  |
| <input type="checkbox"/> CST- Combination sink/table Machine on left  | P/N 180350  |
| <input type="checkbox"/> Flat bottom dishrack                         | P/N 101273  |
| <input type="checkbox"/> Peg dishrack                                 | P/N 101285  |
| <input type="checkbox"/> <b>Three phase machine available</b>         |             |

MD030 Printed in U.S.A.

#### Moyer Diebel - USA

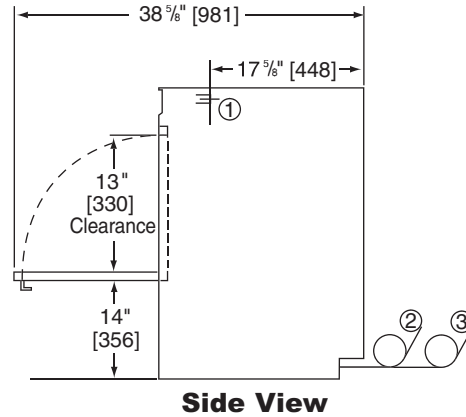
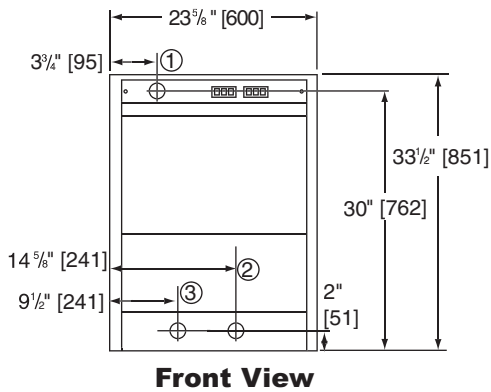
P.O. Box 4183, Winston-Salem, NC 27115 Tel: 336/661-1992 Fax: 336/661-1979 800/228-8350 www.moyerdiebel.com

#### Moyer Diebel Ltd. - Canada

2674 North Service Rd., Jordan Station, Ontario, Canada L0R 1S0 Tel: 800/263-5798 Fax: 905/562-4618  
sales@moyerdiebellimited.com

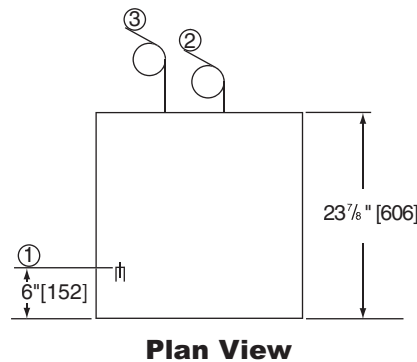


Dimensions shown in inches and [millimeters]



	Uncrated	Crated
<b>Height*</b>	33 1/2" [851]	39-1/2" [1003]
<b>Width</b>	23-5/8" [600]	25" [635]
<b>Depth</b>	23 7/8" [606]	25-1/2" [647]
<b>Ship Wt. lbs/kg</b>	148/67	165/75

\* Front leveling feet provided.



## SPECIFICATIONS

### Capacity

NSF Racks per hr. 20

### Motor Horsepower

Wash 1

### Water Consumption

Gal. per hr. (max. use)  
US gal. (imp. gal./liters) 14.6 (55/12)  
Gal. per rack  
US gal. (imp. gal./liters) .74 (2.9/.62)

### Temperatures °F/C

Wash (minimum) 150/66  
Rinse (minimum) 180/82

### Heating

Tank heat, electric (kW) 2  
Electric booster  
(kW) required for 40°F/22°C rise 4  
(kW) required for 70°F/39°C rise 6

### Time Cycle in Seconds

Wash 120  
Rinse 15  
Dwell 15  
Total 150

## Utilities

### 1 Electrical

208-240/60/1 or (optional 3 phase); hard wiring required (see boxes below)

### 2 Hot Water

140°F/60°C Min., connection for 40°F/22°C rise booster.  
110°F/43°C Min., connection for 70°F/39°C rise booster.  
6 ft. long 1/2" I.D. flexible fill hose with 3/4" hose connector.  
Flow pressure: 18-22 psi (124-152 kPa), PRV supplied

### 3 Drain Connection

6 ft. long, 3/4" I.D. flexible hose.  
Max. drain flow: 8 US gpm; 30 lpm; 7 imp. gpm

301HT with **40°F Rise** Electric Booster

Elec. Specs.	Rated Amps	Minimum Supply Circuit Ampacity	Maximum Overcurrent Protective Device
208/60/1	21	30	30
230/60/1	22	30	30
*208/60/3	14	20	20
*230/60/3	15	20	20

301HT with **70°F Rise** Electric Booster

Elec. Specs.	Rated Amps	Minimum Supply Circuit Ampacity	Maximum Overcurrent Protective Device
208/60/1	28	40	40
230/60/1	31	40	40
*208/60/3	19	25	25
*230/60/3	20	25	25

\* Special Order Only

**Warning:** Plumbing and electrical connections should be made by qualified personnel who will observe all the applicable plumbing, sanitary and safety codes.