

# Set-up Stations

## Mobile Stainless Steel

Spec. # \_\_\_\_\_

AIA # \_\_\_\_\_



Model 4612  
(Shown in Hard Rock  
Maple finish)

### Models 4610, 4612, 4615, 4618

### Add Organization And Enhance The Appearance Of Dining Areas

#### Benefits

- Add attractive service functionality to patios and indoor dining areas
- Easy mobility to provide dining room flexibility

#### Features

- Stainless steel welded construction
- Sealed disposal receptacle for waste liquids
- Choice of stainless steel or laminate exterior finishes
- Concealed casters provide built-in look
- Open and concealed storage

#### Casters

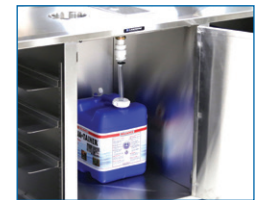
- All-swivel 5" cushion tread



Model 4615



Liquid disposal and  
waste chute



Sealed 7-gallon waste  
liquid receptacle

#### Specifications:

Unit shall be of welded stainless steel construction and shall have 18-gauge sides and 16-gauge top. Interior compartment floor shall be 18-gauge stainless steel. Top shall have 6" high backsplash wall on three sides. Open compartment(s) shall include three sets of adjustable-height universal ledges to accommodate bus tubs or various trays. Unit top shall feature a refuse chute and drop-in stainless steel drainage sink for liquid waste. Sink shall drain to a sealed 7-gallon polyethylene waste liquid receptacle. Enclosed compartment shall include space for liquid receptacle and waste bin (bin not included). Hinged compartment door shall have recessed paddle latch. 5" all-swivel casters with cushion tread wheels shall be recessed/hidden and shall be fastened to a stainless steel dolly frame for extra strength.

Lakeside Manufacturing, Inc.

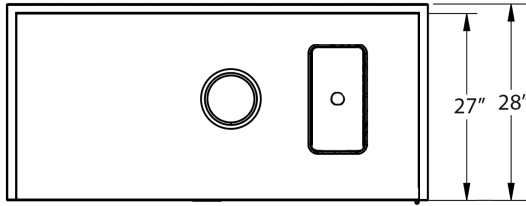
4900 West Electric Avenue • West Milwaukee, WI 53219 U.S.A.

800-558-8565 • 414-902-6400 • Fax 414-902-6446 • info@eLakeside.com • www.eLakesideFoodservice.com

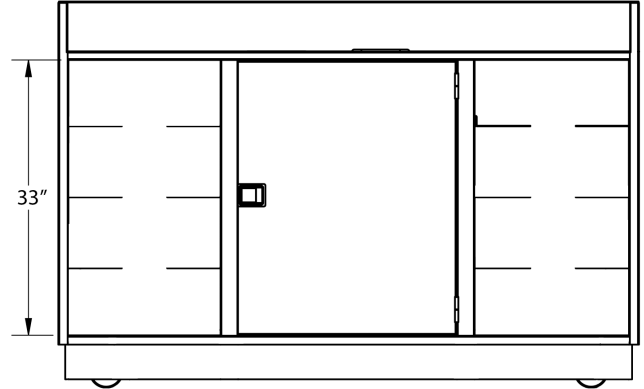
**Models**  
**4610, 4612**  
**4615, 4618**

# Set-up & Bussing Stations

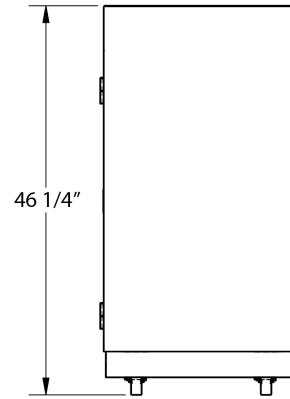
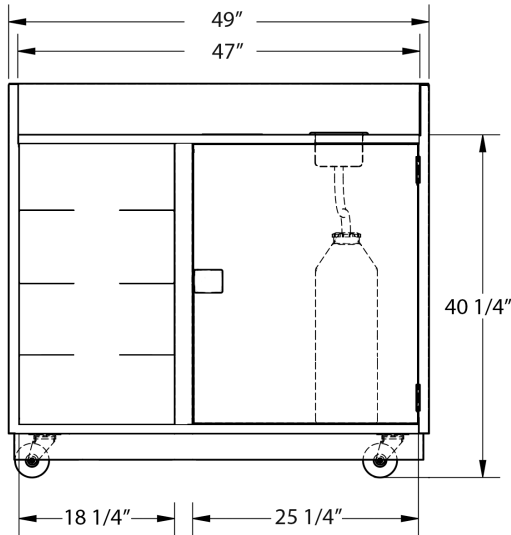
Mobile Stainless Steel



**Model 4610**



**Model 4615**



Spec. #

AIA #

**Product Information:**

Model	Overall Size			Encl. Compartment			Open Compartment(s)			Exterior Finish	Case Wt. Lbs. (Kg)
	W	D	H	W	D	H	W	D	H		
4610	49"	28"	46 1/4"	25 1/4"	26 3/4"	33"	18 1/4"	26 3/4"	33"	Stainless Steel	355 (161)
	(1245)	(711)	(1175)	(641)	(679)	(838)	(464)	(679)	(838)		
4612	49"	28"	46 1/4"	25 1/4"	26 3/4"	33"	18 1/4"	26 3/4"	33"	Laminate	362 (164)
	(1245)	(711)	(1175)	(641)	(679)	(838)	(464)	(679)	(838)		
4615	70"	28"	46 1/4"	25 1/4"	26 3/4"	33"	18 1/4"	26 3/4"	33"	Stainless Steel	377 (171)
	(1778)	(711)	(1175)	(641)	(679)	(838)	(464)	(679)	(838)		
4618	70"	28"	46 1/4"	25 1/4"	26 3/4"	33"	18 1/4"	26 3/4"	33"	Laminate	384 (174)
	(1778)	(711)	(1175)	(641)	(679)	(838)	(464)	(679)	(838)		

*Dimensions in ( ) denote metric millimeters, unless otherwise noted.*

**Accessories:**

- 23-gal. poly waste bin (20" x 11" x 30") \_\_\_\_\_

**Available Laminate Finishes**



- Walnut
- Gray Sand
- Light Maple
- Victorian Cherry



- Beige Suede
- Hard Rock Maple
- Red Maple
- Red
- Green
- Black
- Royal Blue
- Purple

**Options:**

- Leveling feet (in place of casters)
- 6" wide tread casters
- Plumbed sink with faucet (4615, 4618 only)
- Removable overshelf (full)
- Removable overshelf (half)



**Lakeside Manufacturing, Inc.**  
 4900 West Electric Avenue • West Milwaukee, WI 53219 U.S.A.  
 800-558-8565 • 414-902-6400 • Fax 414-902-6446  
 info@eLakeside.com • www.eLakesideFoodservice.com