

Set-up Stations

Mobile Stainless Steel

Spec. # _____

AIA # _____



Model 4612
(Shown in Hard Rock
Maple finish)

Models
4610, 4612, 4615, 4618

Add Organization And Enhance The Appearance Of Dining Areas

Benefits

- Add attractive service functionality to patios and indoor dining areas
- Easy mobility to provide dining room flexibility

Features

- Stainless steel welded construction
- Sealed disposal receptacle for waste liquids
- Choice of stainless steel or laminate exterior finishes
- Concealed casters provide built-in look
- Open and concealed storage

Casters

- All-swivel 5" cushion tread



Model 4615



Liquid disposal and waste chute



Sealed 7-gallon waste liquid receptacle

Specifications:

Unit shall be of welded stainless steel construction and shall have 18-gauge sides and 16-gauge top. Interior compartment floor shall be 18-gauge stainless steel. Top shall have 6" high backsplash wall on three sides. Open compartment(s) shall include three sets of adjustable-height universal ledges to accommodate bus tubs or various trays. Unit top shall feature a refuse chute and drop-in stainless steel drainage sink for liquid waste. Sink shall drain to a sealed 7-gallon polyethylene waste liquid receptacle. Enclosed compartment shall include space for liquid receptacle and waste bin (bin not included). Hinged compartment door shall have recessed paddle latch. 5" all-swivel casters with cushion tread wheels shall be recessed/hidden and shall be fastened to a stainless steel dolly frame for extra strength.

Lakeside Manufacturing, Inc.

4900 West Electric Avenue • West Milwaukee, WI 53219 U.S.A.

800-558-8565 • 414-902-6400 • Fax 414-902-6446 • info@eLakeside.com • www.eLakesideFoodservice.com

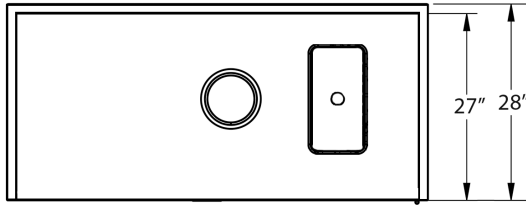
Models
4610, 4612
4615, 4618

Set-up & Bussing Stations

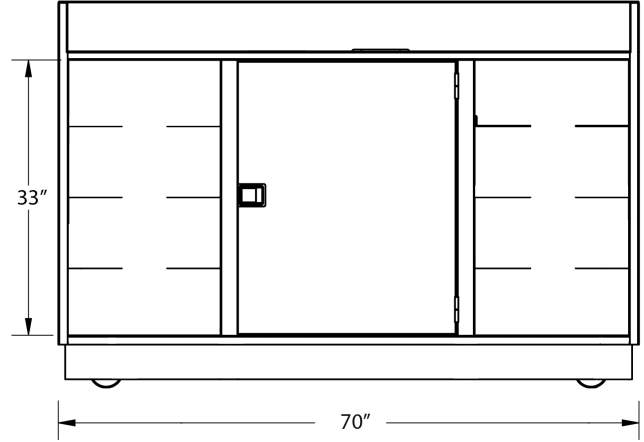
Mobile Stainless Steel

Spec. #

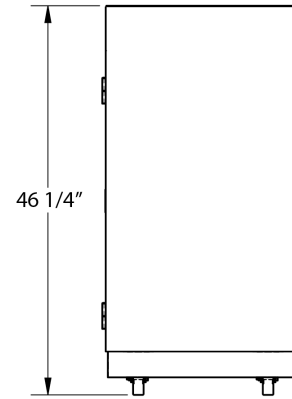
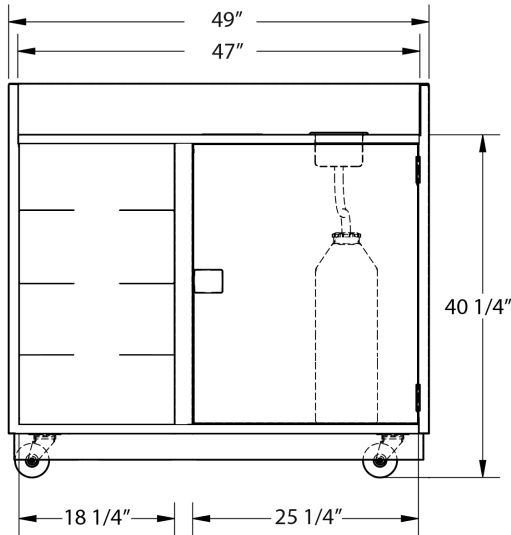
AIA #



Model 4610



Model 4615



Product Information:

| Model | Overall Size | | | Encl. Compartment | | | Open Compartment(s) | | | Exterior Finish | Case Wt. Lbs. (Kg) |
|-------|--------------|-------|---------|-------------------|---------|-------|---------------------|---------|-------|-----------------|--------------------|
| | W | D | H | W | D | H | W | D | H | | |
| 4610 | 49" | 28" | 46 1/4" | 25 1/4" | 26 3/4" | 33" | 18 1/4" | 26 3/4" | 33" | Stainless Steel | 355 (161) |
| | (1245) | (711) | (1175) | (641) | (679) | (838) | (464) | (679) | (838) | | |
| 4612 | 49" | 28" | 46 1/4" | 25 1/4" | 26 3/4" | 33" | 18 1/4" | 26 3/4" | 33" | Laminate | 362 (164) |
| | (1245) | (711) | (1175) | (641) | (679) | (838) | (464) | (679) | (838) | | |
| 4615 | 70" | 28" | 46 1/4" | 25 1/4" | 26 3/4" | 33" | 18 1/4" | 26 3/4" | 33" | Stainless Steel | 377 (171) |
| | (1778) | (711) | (1175) | (641) | (679) | (838) | (464) | (679) | (838) | | |
| 4618 | 70" | 28" | 46 1/4" | 25 1/4" | 26 3/4" | 33" | 18 1/4" | 26 3/4" | 33" | Laminate | 384 (174) |
| | (1778) | (711) | (1175) | (641) | (679) | (838) | (464) | (679) | (838) | | |

Dimensions in () denote metric millimeters, unless otherwise noted.

Accessories:

- 23-gal. poly waste bin (20" x 11" x 30") _____

Available Laminate Finishes



- Walnut
- Gray Sand
- Light Maple
- Victorian Cherry



- Beige Suede
- Hard Rock Maple
- Red Maple
- Red
- Green
- Black
- Royal Blue
- Purple

Options:

- Leveling feet (in place of casters)
- Removable overshelf (full)
- 6" wide tread casters
- Removable overshelf (half)
- Plumbed sink with faucet (4615, 4618 only)



Lakeside Manufacturing, Inc.
 4900 West Electric Avenue • West Milwaukee, WI 53219 U.S.A.
 800-558-8565 • 414-902-6400 • Fax 414-902-6446
 info@eLakeside.com • www.eLakesideFoodservice.com