



Project:

Item Number:

Quantity:

MODULAR DROP-IN: SOUP WELL



Modular Drop-In: Soup Well

MODEL

36462	7¼ Qt. Infinite Control
36463	7¼ Qt. Infinite Control
36464	11 Qt. Infinite Control
36465	11 Qt. Infinite Control
3646210	7¼ Qt. Thermostatic Control
3646310	7¼ Qt. Thermostatic Control
3646410	11 Qt. Thermostatic Control
3646510	11 Qt. Thermostatic Control

FEATURES

- Top is 22-gauge stainless steel, 18-8 Type 304
- Molded breaker gasket fitted under drip-edge
- Flat work surface around opening
- Deep-drawn well is 22-gauge, 18-8 stainless steel
- Standard drain is ¾" (1.9 cm) stainless steel fitting welded to pan with ball valve shutoff below exterior housing
- Exterior housing is 22-gauge stainless steel
- Drop-in supplied with stainless steel control panel
- Unit comes with cord and plug and does not require hard-wiring installation
- 6-foot (183 cm) power cord
- Full one-year parts and labor warranty

DESCRIPTION

The modular drop-in is designed for top-mount installation and does not require hard-wiring. A flat flange with gasket ensures firm fit against countertop.

4 qt. soup wells use 480W elements and 7 qt. and 11 qt. use 720W elements for efficient low cost operation.

Stainless steel drain nipple is welded to interior well to ensure long service life.

Stainless steel wells are designed to hold appropriate size vegetable insets and allow sufficient water capacity to ensure maximum moist heat operation.

Agency Certifications



Due to continued product improvement, please consult www.vollrathco.com for current product specifications.

WARRANTY: All models shown come with Vollrath's standard warranty against defects in materials and workmanship. For full warranty details, please refer to the Vollrath Equipment and Smallwares Catalog.

Approvals	Date



www.vollrathco.com

The Vollrath Company, L.L.C.
 1236 North 18th Street
 Sheboygan, WI 53081-3201 U.S.A.
 Customer Service: 800.628.0830
 Canada Customer Service: 800.695.8560
 Main Fax: 800.752.5620 or 920.459.6573

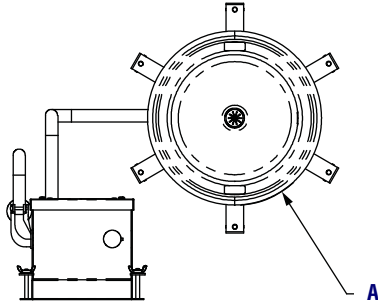
Technical Services: 800.628.0832
 Technical Services Fax: 920.459.5462

MODULAR DROP-IN: SOUP WELL

MODELS	Capacity	Control	MODELS	Capacity	Control
36462	7¼ Qt.	Infinite Control	3646210	7¼ Qt.	Thermostatic Control
36463	7¼ Qt.	Infinite Control	3646310	7¼ Qt.	Thermostatic Control
36464	11 Qt.	Infinite Control	3646410	11 Qt.	Thermostatic Control
36465	11 Qt.	Infinite Control	3646510	11 Qt.	Thermostatic Control

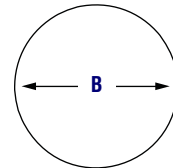
DIMENSIONS

☐ Dimensions shown in inches (cm).

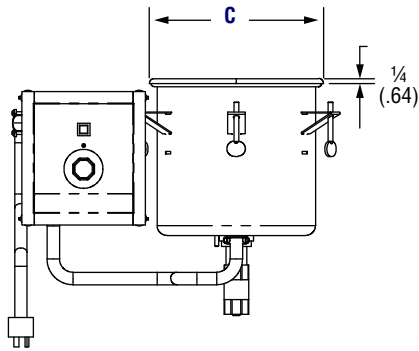
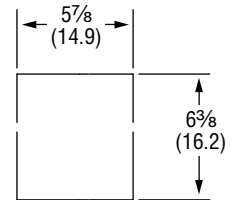


Top View

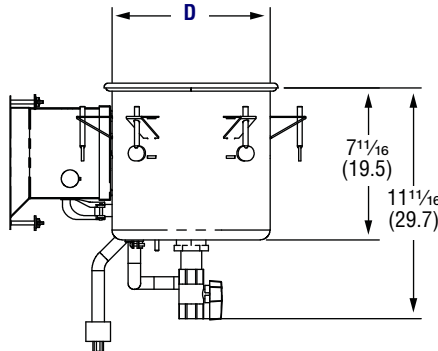
Round Well Cutout



Control Panel Cutout



Front View

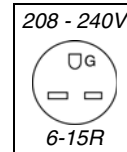
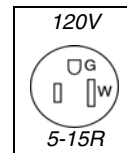


Side View

SPECIFICATIONS

Model	Capacity QT (L)	(A) Over Flange Diameter	(B) Cutout Diameter	(C) Outside Diameter	(D) Well Outer Diameter	Voltage	Watts	Amps	Plug
36462 3646210	7¼ (6.9)	10 ³ / ₁₆ (28.4)	10 ⁹ / ₁₆ (26.8)	11 ¹ / ₁₆ (28.4)	10 ⁵ / ₁₆ (26.2)	120V, 50/60 Hz	720	6	5-15P
36463 3646310	7¼ (6.9)	10 ³ / ₁₆ (28.4)	10 ⁹ / ₁₆ (26.8)	11 ¹ / ₁₆ (28.4)	10 ⁵ / ₁₆ (26.2)	208 - 240V, 50/60 Hz	720-960	3.5 - 4	6-15P
36464 3646410	11 (10.5)	12 ¹³ / ₁₆ (32.5)	12¼ (31.1)	12 ¹³ / ₁₆ (32.5)	12 (30.5)	120V, 50/60 Hz	720	6	5-15P
36465 3646510	11 (10.5)	12 ¹³ / ₁₆ (32.5)	12¼ (31.1)	12 ¹³ / ₁₆ (32.5)	12 (30.5)	208 - 240V, 50/60 Hz	720-960	3.5 - 4	6-15P

Receptacles



The Vollrath Company, L.L.C.
 1236 North 18th Street
 Sheboygan, WI 53081-3201 U.S.A.
 Customer Service: 800.628.0830
 Canada Customer Service: 800.695.8560
 Main Fax: 800.752.5620 or 920.459.6573

Technical Services: 800.628.0832
 Technical Services Fax: 920.459.5462