



Model #ABB-48

Cooling

| | |
|--------------------------|-----------|
| Temperature Range | 33°F-40°F |
| Refrigerant | R290 |
| Max. Ambient Temperature | 90°F |
| Defrosting | Automatic |
| Temperature Controller | Digital |
| Horsepower | 1/5 |

Electrical

| | |
|------------------------|------------|
| Voltage | 115 |
| Amps | 2.88 |
| Hz | 60 |
| Phase | 1 |
| Plug Type | NEMA-5-15P |
| Electrical Cord Length | 106" |

Standard Features – Back Bar Refrigerator #ABB-48

- Environmentally safe R290 refrigerant
- Durable black coated steel exterior with solid doors
- Painted aluminum interior
- 1-1/2" built-in stainless steel top
- Foamed-in-place polyurethane insulation
- Accommodates up to (2) ½ kegs
- 13 cu. Ft. interior
- (4) epoxy coated steel shelves
- Digital temperature controller
- 115V; 1/5 HP

Construction

| | |
|---------------------|------------------------------------------|
| Exterior Material | Black Coated Steel |
| Interior Material | Painted aluminum |
| Insulation Material | Foamed-In-Place Polyurethane |
| Shelf Size | (4) 17-5/8" x 18-1/8" epoxy coated steel |
| Load Capacity | 90 lb. |

Dimensions

| | |
|---------------------|--------------------------------|
| Exterior Dimensions | 48-3/4"W x 25-3/4"D x 35-5/8"H |
| Interior Dimensions | 36-1/4"W x 18-1/2"D x 28-7/8"H |
| Shipping Dimensions | 51-1/4"W x 27-1/2"D x 41-3/4"H |
| Net Volume | 13 cu. ft. |
| Net Weight | 231 lb. |
| Gross Weight | 282 lb. |



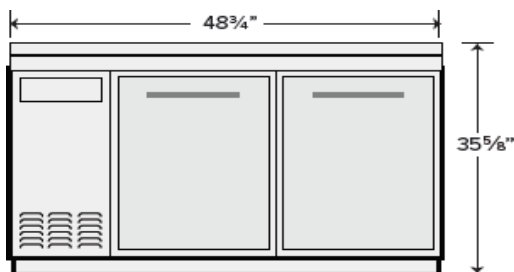
Parts & Labor



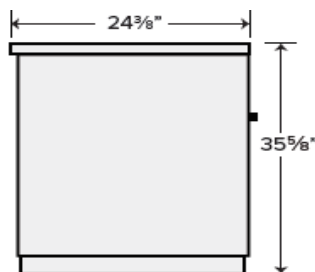
Compressor

PLAN VIEW

Front View



Side View



Top View

