



### Model #ABB-48SS

#### Cooling

Temperature Range	33°F-40°F
Refrigerant	R290
Max. Ambient Temperature	90°F
Defrosting	Automatic
Temperature Controller	Digital
Horsepower	1/5

#### Electrical

Voltage	115
Amps	2.88
Hz	60
Phase	1
Plug Type	NEMA-5-15P
Electrical Cord Length	106"

#### Standard Features – Back Bar Refrigerator #ABB-48SS

- Environmentally safe R290 refrigerant
- 430 stainless steel exterior with solid doors
- Painted aluminum interior
- 1-1/2" built-in stainless steel top
- Foamed-in-place polyurethane insulation
- Accommodates up to (2) ½ kegs
- 13 cu. Ft. interior
- (4) epoxy coated steel shelves
- Digital temperature controller
- 115V; 1/5 HP

#### Construction

Exterior Material	430 Stainless Steel
Interior Material	Painted aluminum
Insulation Material	Foamed-In-Place Polyurethane
Shelf Size	(4) 17-5/8" x 18-1/8" epoxy coated steel
Load Capacity	90 lb.

#### Dimensions

Exterior Dimensions	48-3/4"W x 25-3/4"D x 35-5/8"H
Interior Dimensions	36-1/4"W x 18-1/2"D x 28-7/8"H
Shipping Dimensions	51-1/4"W x 27-1/2"D x 41-3/4"H
Net Volume	13 cu. ft.
Net Weight	231 lb.
Gross Weight	282 lb.



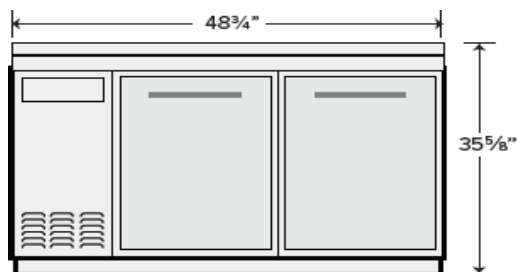
Parts & Labor



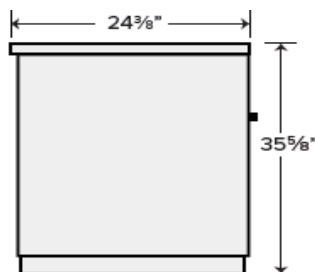
Compressor

#### PLAN VIEW

Front View



Side View



Top View

