



Model #ABB-60-27

Standard Features – Back Bar Refrigerator #ABB-60-27

- Environmentally safe R290 refrigerant
- Durable black coated steel exterior with solid doors
- Painted aluminum
- 1-1/2" built-in stainless steel top
- Foamed-in-place polyurethane insulation
- Accommodates up to (2) ½ kegs
- 23.3 cu. ft. interior
- (4) epoxy coated steel shelves
- Digital temperature controller
- 115V; 1/5 HP

Construction

Exterior Material	Black Coated Steel
Interior Material	Painted aluminum
Insulation Material	Foamed-In-Place Polyurethane
Shelf Size	(4) epoxy coated steel
Load Capacity	90 lb.

Cooling

Temperature Range	33°F-41°F
Refrigerant	R290
Max. Ambient Temperature	90°F
Defrosting	Automatic
Temperature Controller	Digital
Horsepower	1/5

Electrical

Voltage	115
Amps	3.6
Hz	60
Phase	1
Plug Type	NEMA-5-15P
Electrical Cord Length	84"

Dimensions

Exterior Dimensions	69-1/4"W x 27-3/4"D x 36-1/4"H
Interior Dimensions	48"W x 22-1/2"D x 33"H
Shipping Dimensions	71-1/2"W x 30-1/2"D x 41-3/4"H
Net Volume	23.3 cu. ft.
Net Weight	280 lb.
Gross Weight	324 lb.



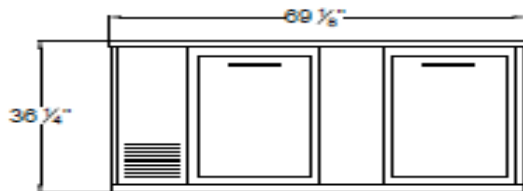
Parts & Labor



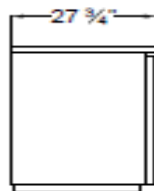
Compressor

PLAN VIEW

Front View



Side View



Top View

