



Model #ABB-72SS

Cooling

Temperature Range	33°F-40°F
Refrigerant	R290
Max. Ambient Temperature	90°F
Defrosting	Automatic
Temperature Controller	Digital
Horsepower	1/4

Electrical

Voltage	115
Amps	3.96
Hz	60
Phase	1
Plug Type	NEMA-5-15P
Electrical Cord Length	106"

Standard Features – Back Bar Refrigerator #ABB-72SS

- Environmentally safe R290 refrigerant
- 430 Stainless steel with solid doors
- Painted aluminum
- 1-1/2" built-in stainless steel top
- Foamed-in-place polyurethane insulation
- Accommodates up to (3) ½ kegs
- 17.3 cu. Ft. interior
- (6) epoxy coated steel shelves
- Digital temperature controller
- 115V; 1/4 HP

Construction

Exterior Material	430 Stainless steel
Interior Material	Painted aluminum
Insulation Material	Foamed-In-Place Polyurethane
Shelf Size	(4) 19" x 18-1/4" (2) 20-1/2" x 18-1/8" epoxy coated steel
Load Capacity	90 lb.

Dimensions

Exterior Dimensions	72-3/4"W x 25-3/4"D x 35-5/8"H
Interior Dimensions	60-1/8"W x 18-1/2"D x 28-7/8"H
Shipping Dimensions	75-1/4"W x 27-1/2"D x 41-3/4"H
Net Volume	17.3 cu. ft.
Net Weight	331 lb.
Gross Weight	374 lb.



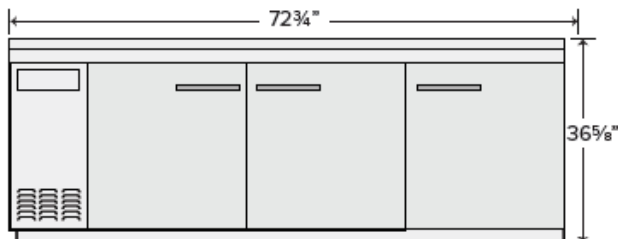
Parts & Labor



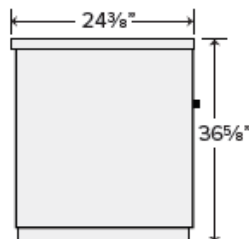
Compressor

PLAN VIEW

Front View



Side View



Top View

