

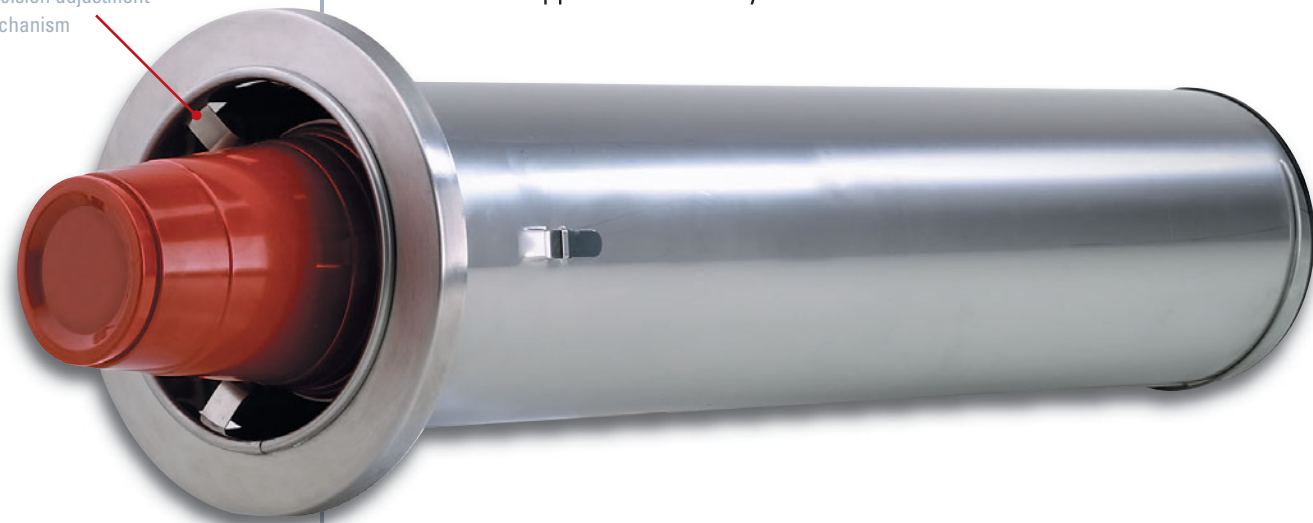
## PRECISION ADJUSTMENT DISPENSING FLEXIBILITY

### ADJ SERIES IN-COUNTER ADJUSTABLE CUP DISPENSERS

**DISPENSE-RITE** ADJ Series cup dispensers feature quality stainless steel construction. These dispensers utilize an exclusive spring-clip precision adjustment mechanism to accommodate a full range of cup sizes from 4 oz. to 64 oz.

A calibrated compression spring ensures one at a time dispensing in horizontal, angled or vertical mounting positions. The quick-release mounting bracket fully supports the dispenser in horizontal, angled or vertical mounting positions and no additional support is necessary. All models are NSF listed.

**DISPENSE-RITE**  
exclusive spring-clip  
precision adjustment  
mechanism



The **ADJ-1** and **ADJ-1.50** are the ideal dispensers for smaller cup sizes and tight spaces. The ADJ-1 is designed to accommodate 4 oz. to 12 oz. paper, plastic or foam cups with rim diameters ranging in size from 2½"-3½". The ADJ-1 model requires a small 4" hole cut-out and is ideal for many retrofit applications. The ADJ-1.50 is designed to accommodate 8 oz. to 24 oz. paper, plastic or foam cups with rim diameters ranging in size from 3"-3½". The ADJ-1.50 model requires a 4½" hole cut-out and combines dispensing flexibility with space savings.

The **ADJ-2** is our most popular cup dispenser. It is a **One-Size-Fits-All** model that offers maximum dispensing flexibility. This unit is designed to accommodate a variety of 8 oz. to 44 oz. paper, plastic or foam cups with rim diameters ranging in size from 3"-4½". This model comes in two under counter lengths: 22" or 19". The ADJ-2 models require a 5½" hole cut-out.

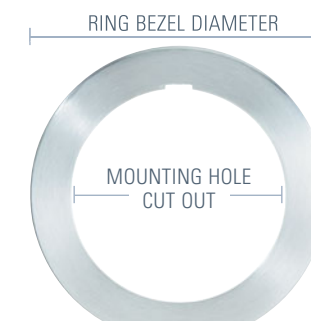
The **ADJ-3** is the ideal dispenser for jumbo size drink cups and deli containers. This unit is designed to accommodate 44 oz. to 64 oz. paper, plastic or foam cups with rim diameters ranging in size from 4½"-5½". The ADJ-3 model requires a larger 5½" hole cut-out.

• Above models ship with 2 different compression springs "F" & "P".  
See chart on page 19 for details.

**NSF.**

| Model Number | Cup Rim Diameter Range | Under Counter Length | Ring Bezel Diameter | Mounting Hole Cut-Out |
|--------------|------------------------|----------------------|---------------------|-----------------------|
| ADJ-1        | 2½"-3½"                | 22"                  | 5½"                 | 4"                    |
| ADJ-1.50     | 3"-3½"                 | 22"                  | 5½"                 | 4½"                   |
| ADJ-2        | 3"-4½"                 | 22"                  | 6½"                 | 5½"                   |
| ADJ-3        | 4½"-5½"                | 22"                  | 7½"                 | 5½"                   |

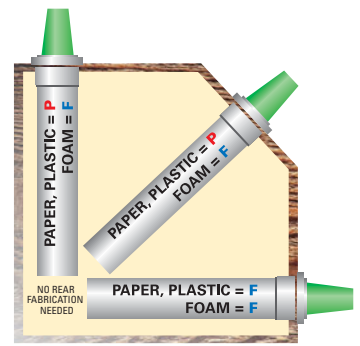
### ADJ-1, ADJ-1.50, ADJ-2 AND ADJ-3 IN-COUNTER ADJUSTABLE CUP DISPENSERS



| SIZE-RITE |                  |
|-----------|------------------|
| MODEL     | APPROX CUP SIZE  |
| ADJ-1     | 4 oz. to 12 oz.  |
| ADJ-1.50  | 8 oz. to 24 oz.  |
| ADJ-2     | 8 oz. to 44 oz.  |
| ADJ-3     | 44 oz. to 64 oz. |

The ADJ Series accommodates a variety of cup sizes ranging from 4 oz. to 64 oz. Always verify cup rim diameter prior to ordering.

#### Spring Configurations ▾



| Cup Type     | Position       | Spring     |
|--------------|----------------|------------|
| Foam Cups    | : Any Position | : F Spring |
| Paper Cups   | : Horizontal   | : F Spring |
| Paper Cups   | : Angled       | : P Spring |
| Plastic Cups | : Angled       | : P Spring |
| Paper Cups   | : Vertical     | : P Spring |
| Plastic Cups | : Vertical     | : P Spring |

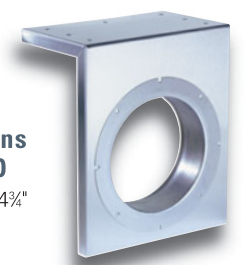
Dispensers ship with both the "F" and "P" compression springs. Single spring models are available; see price list for additional information.

#### Color Ring Bezels ▾

Stainless ring bezels are standard. Optional powder coated ring bezels are available in these popular colors:

- **BLACK RIDGE** (matte textured) Available for the ADJ-1, ADJ-1.50, ADJ-2 or ADJ-3
- **RED** (high gloss) Available for the ADJ-2 only
- **BLACK** (high gloss) Available for the ADJ-2 only

#### Under Counter Bracket ▾



**Dimensions**  
H x W x D  
9½" x 7¾" x 4¾"

The optional **UCMB-2** stainless steel under counter bracket mounts to any flat surface or wire shelf creating a faceplate to mount an ADJ-2 cup dispenser. Maximum counter lip is 1½".

STAINLESS STEEL CONSTRUCTION

STAINLESS STEEL CONSTRUCTION