



Stainless design.  
Stellar performance.  
Superior value.

Project name: \_\_\_\_\_

Location: \_\_\_\_\_

Item #: \_\_\_\_\_ QTY: \_\_\_\_\_

Model #: \_\_\_\_\_

**AGF24**  
FREEZER

GLASS  
FROSTER



## AGF24

- ▶ Tested to NSF Standard 7 requirements for open food storage.
- ▶ All Arctic Air products come with full two year parts and labor warranty and a five year compressor warranty.
- ▶ Arctic Air products must pass numerous quality control inspections throughout the manufacturing process.
- ▶ All products are operated and monitored for a minimum of thirteen hours prior to packaging and shipping.
- ▶ All products are pressurized with environmentally friendly and more efficient Hydrocarbon gas.



COMMERCIAL FREEZERS & REFRIGERATORS

Division of Broich Enterprises, Inc. 7550 Market Place Dr Eden Prairie, MN 55344  
952-941-2270 Fax: 952-941-3066 [www.arcticairco.com](http://www.arcticairco.com) [info@arcticairco.com](mailto:info@arcticairco.com)



# AGF24 FREEZER

# GLASS FROSTER

Electronic thermostat with digital LED display for accurate control located behind front access panel.

Exterior cabinet construction consists of black powder coated steel front and sides.

Self-contained capillary tube system using environmentally friendly R290 Hydrocarbon gas.

Easy to mount 3.50" casters (two lockable) are standard with all units.



Stainless steel sliding lids with locks.

Bright stainless steel interior.

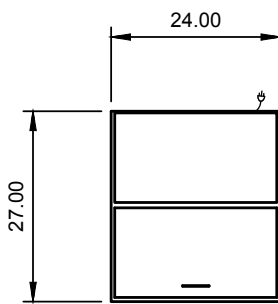
Front accessible condensing unit for easy cleaning and maintenance.

- ▶ Tested to NSF Standard 7 requirements for open food storage.
- ▶ All Arctic Air products come with full two year parts and labor warranties and a five year compressor warranty.

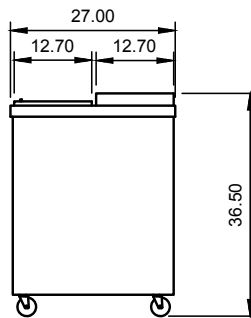
## STAINLESS STEEL DESIGN • STELLAR PERFORMANCE • SUPERIOR VALUE

Model Number	External Dimensions			Doors	Epoxy Coated Shelves (horizontal)	Shelf Capacity Sq. Ft.	Temperature Range	Cord Length	HP	AMPS	REF	NEMA Plug	Crate Weight
	Width	Depth	Height**										
AGF24	24"	27"	36.5"	N/A	(1) Full (2) 1/2's	4.3	-10°F to 10°F	8'	1/5	1.5	R290	5-15P	155lbs

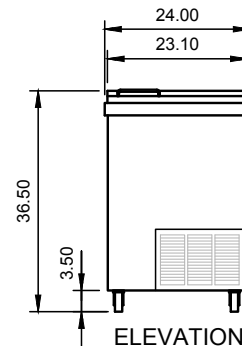
\*\*Height includes 3.25" for casters



PLAN



SIDE



ELEVATION

