



**Model #AGM-26**

**Cooling**

Temperature Range	33°F-40°F
Refrigerant	R290
Max. Ambient Temperature	90°F
Defrosting	Automatic
Temperature Controller	Digital
Horsepower	1/5

**Electrical**

Voltage	115
Amps	2.88
Hz	60
Phase	1
Plug Type	NEMA-5-15P
Electrical Cord Length	84"

**Standard Features – Glass Merchandiser Refrigerated Model #AGM-26**

- Single self-closing, anti-fog glass door
- Interior LED lighting
- (4) epoxy-coated steel shelves included
- Foamed-in-place polyurethane insulation
- Bottom mount condensing unit
- Removable door gasket for easy cleaning
- Automatic defrosting
- Stainless steel floor
- Copper evaporator
- Eco-friendly R290 hydrocarbon refrigerant

**Construction**

Exterior Material	Coated Steel
Interior Material	Painted Aluminum
Door Type	Glass Swing
Insulation Material	Foamed-In-Place Polyurethane
Shelf Size	(4) 14" x 18"
Shelf Material	Epoxy Coated Steel
Shelf Load Capacity	90 lbs.

**Dimensions**

Exterior Dimensions	25-3/8"W x 22-7/8" x 79-3/8"H
Interior Dimensions	23-3/4"W x 24-3/4"D x 55-1/8"H
Shipping Dimensions	27-1/2"W x 24-3/4"D x 85"H
Net Volume	13.3 cu. ft.
Net Weight	265 lbs.
Gross Weight	297 lbs.

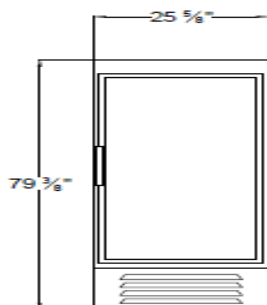


Parts & Labor

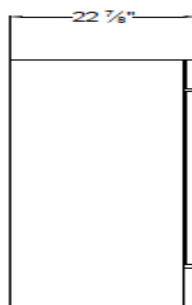
Compressor

**PLAN VIEW**

Front View



Side View



Top View

