

BLACK◆DIAMOND®

Project Name: _____

Location: _____

Item #: _____

Qty: _____

Black Diamond 36" Heavy Duty Gas Charbroiler, 6 Burners, in Stainless Steel

BDCTC-36



Maximize your kitchen's potential with this robust Black Diamond Gas Charbroiler, perfect for restaurants, cafes, and food trucks. Built with stainless steel and cast iron, it promises durability and consistent performance. Featuring a 6 burner capacity, it delivers 120,000 BTUs for efficient grilling. Manual ignition and control provide precision, while the removable drip tray simplifies cleaning, making it an essential asset for any professional kitchen.

FEATURES AND CONSTRUCTION

- Constructed from stainless steel and cast iron for durability
- Delivers a powerful 120,000 BTUs for high-performance cooking
- Features 6 burners for versatile cooking options
- Compact design ideal for small kitchens and food trucks
- Equipped with four 5-inch adjustable legs for stability
- Includes standard coupling adaptor and gas connection for natural gas
- Manual ignition and control type for precise cooking
- Delivers consistent cooking with a wide temperature range
- Easy-to-clean removable drip tray enhances maintenance
- Designed for commercial use in busy kitchen environments

3RD PARTY APPROVALS



Intertek



Intertek

WARRANTY (USA / CANADA)

Protected by Admiral Craft Equipment Corporation's one-year limited warranty.

Contact Admiral Craft Equipment
for details at 1-877-672-7740



INCLUDED COMPONENTS

- (4) Adjustable Legs
- (6) Gas Conversion Orifices
- (1) Relief Valve
- (2) Drip Trays

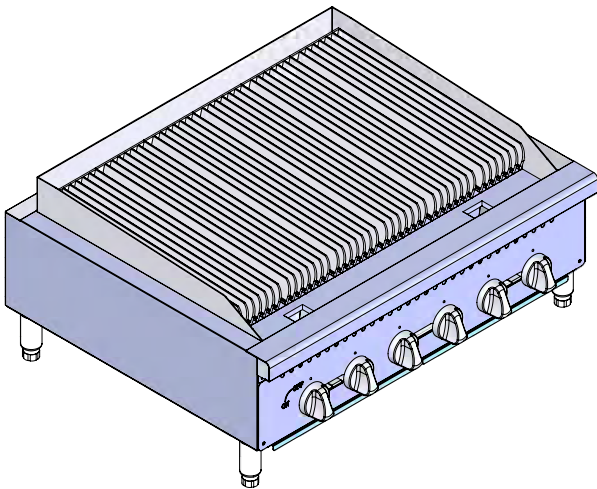
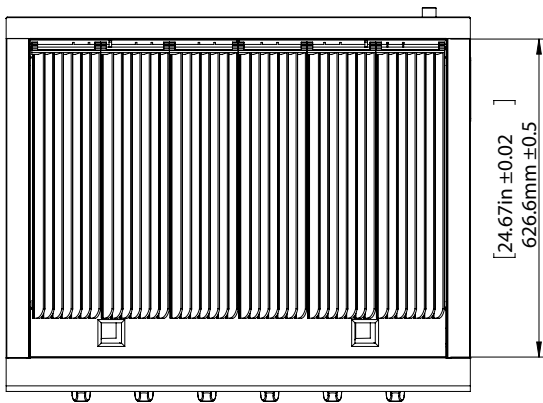
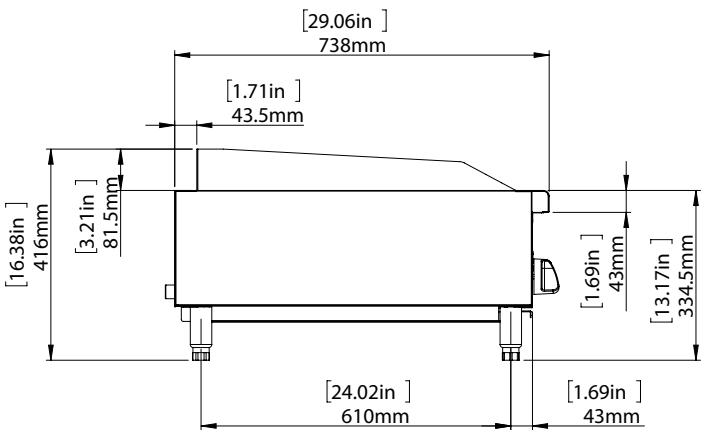
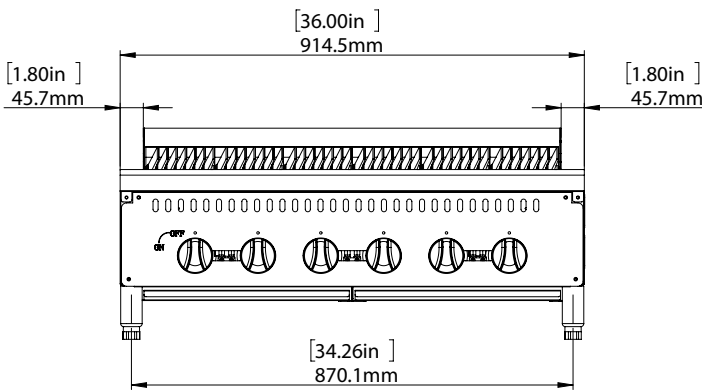
BLACK♦DIAMOND®

Black Diamond 36" Heavy Duty Gas Charbroiler, NG

BDCTC-36

FRONT

SIDE



TOP

Gas

Ignition Type	Total BTU/hr	Total Number of Burners	Cooking Surface	Number of Drip Trays	Assembled Dimensions (in)	Item Weight (lbs)	Shipping Weight (lbs)
Manual	120000	6	Cast Iron	1	29.06" x 36.00" x 13.17"	274.5	330.8

ADDITIONAL INFORMATION

- Electricity not needed.
- Liquid Propane (LP) or Natural Gas (NG) units available. Field convertible from LP to NG and vice versa.
- Minimum supply pressure is 4" W.C. for natural gas and 10" W.C. for propane.
- Gas powered appliances must always be indoors, under an approved exhaust system with grease removal filters and a fire protection system.

Due to periodic changes in designs, methods, procedures, policies and regulations, the specifications contained in this document are subject to change without notice. While we exercise good faith efforts to provide information that is accurate, we are not responsible for errors or omissions in information provided or conclusions reached as a result of using the specifications. By using the information provided, the user assumes all risks in connection with such use.