

BLACK◆DIAMOND®

Project Name: _____

Location: _____

Item #: _____

Qty: _____

Black Diamond 12" Gas Hot Plate, 2 Burners, in Stainless Steel

BDCTH-12

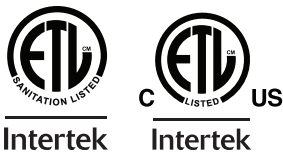


Suitable for various stovetop cooking tasks, the Black Diamond Gas Hot Plate is a versatile and compact appliance that is a valuable addition to any commercial kitchen. The countertop unit is ideal for establishments with limited kitchen space. This commercial gas hot plate is constructed of a stainless steel front and sides that are fully welded and can withstand the toughest kitchen environments. The unit features two manual cast iron burner controls, allowing chefs to cook multiple dishes at once.

FEATURES AND CONSTRUCTION

- 2 manual cast iron burner controls
- Constructed of a stainless steel front and sides that are fully welded and able to withstand the toughest of kitchen environments
- Each cast iron burner puts out 30,000 BTU/hr with two cast iron burners for every 12" grate width
- Separate gas valves for each burner with standing pilot lights
- Countertop unit is ideal for establishments with limited kitchen space
- 1 stainless steel drip tray collects grease and food debris
- 4 adjustable legs provide stability
- 60,000 total BTU
- Suitable for a wide range of cooking tasks
- Set up for use with Natural Gas (NG) and is field convertible to Liquid Propane (LPG)
- Ideal for small kitchens, food trucks, concession stands, diners, coffee shops and more

3RD PARTY APPROVALS



WARRANTY (USA / CANADA)

Protected by Admiral Craft Equipment Corporation's one-year limited warranty.

Contact Admiral Craft Equipment
for details at 1-877-672-7740



INCLUDED COMPONENTS

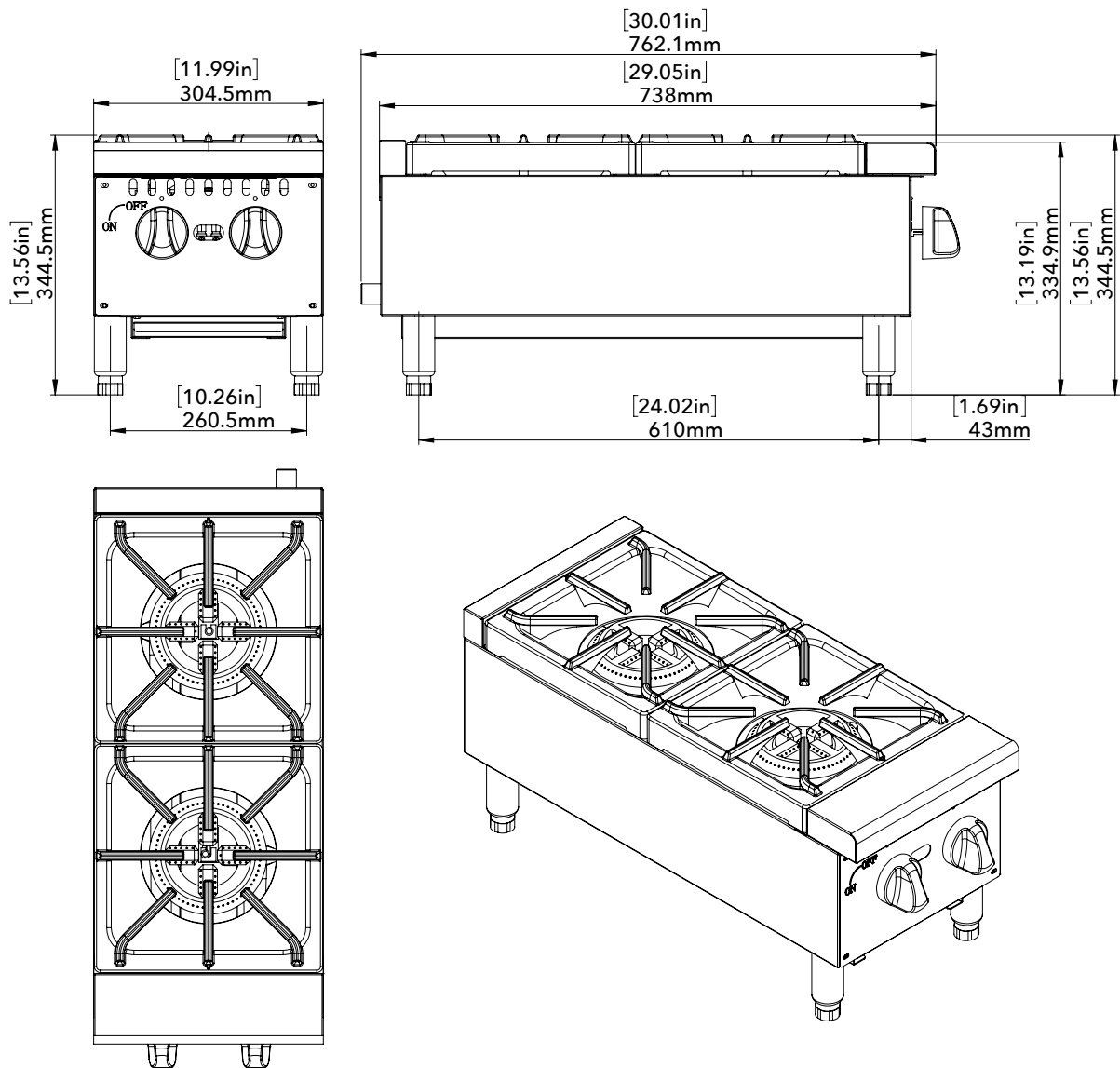
- (4) Adjustable Legs
- (2) Gas Conversion Orifices
- (1) Relief Valve
- (1) Drip Tray

BLACK♦DIAMOND® **Black Diamond 12" Gas Hot Plate, NG**

BDCTH-12

FRONT

SIDE



TOP

Gas

Ignition Type	Total BTU/hr	Total Number of Burners	Cooking Surface	Number of Drip Trays	Assembled Dimensions (in)	Item Weight (lbs)	Shipping Weight (lbs)
Manual	60000	2	Cast Iron	1	29.05" x 11.99" x 13.19"	65.0	94.8

ADDITIONAL INFORMATION

- Electricity not needed.
- Liquid Propane (LP) or Natural Gas (NG) units available. Field convertible from LP to NG and vice versa.
- Minimum supply pressure is 4" W.C. for natural gas and 10" W.C. for propane.
- Gas powered appliances must always be indoors, under an approved exhaust system with grease removal filters and a fire protection system.

Due to periodic changes in designs, methods, procedures, policies and regulations, the specifications contained in this document are subject to change without notice. While we exercise good faith efforts to provide information that is accurate, we are not responsible for errors or omissions in information provided or conclusions reached as a result of using the specifications. By using the information provided, the user assumes all risks in connection with such use.