



Project Name: _____
Location: _____
Item #: _____
Qty: _____

Adcraft Double Belgian Waffle Maker, 7", in Stainless Steel

BWM7R2S



Craft exceptional waffles with the high-performance Adcraft Double Belgian Waffle Maker, perfect for commercial kitchens. Made from SUS430, SUS304, and galvanized sheet, it promises durability and efficiency. Capable of producing 2 waffles every 3 minutes, it operates within a temperature range of 255° to 450°F. The digital control ensures precise cooking, while its non-stick surface simplifies cleaning, making it an indispensable tool for culinary professionals.

Features and Construction

- Made from SUS430 and SUS304 stainless steel, and galvanized sheet
- Operates on 120V with a NEMA 5-15P plug type
- Features digital control for precise cooking
- Makes two waffles in about 3 minutes
- Designed for countertop use with no casters
- Digital controls ensure easy operation
- Grids rotate 180 degrees for even batter distribution, ensuring uniform thickness and texture
- Temperature range of 255° to 450°F
- Non-stick surface for easy cleaning and maintenance
- Includes a drip tray to catch excess batter

Electric

120V / 1080W x 2 / 9A
Cord Length (Inches): 59"
Plug Type: NEMA 5-15P
Cord set included

NEMA 5-15P



Included Components

- Handle, batter cup

Capacity

- Cook up to 40, 7" round x 1.25" thick waffles per hour

Temperature

- Temperature Range (Fahrenheit): 255° - 450°

3rd Party Approvals



Intertek



Intertek

Warranty (USA Only)

Protected by Admiral Craft Equipment Corporation's one-year limited warranty.

Contact Admiral Craft Equipment
for details at 1-877-672-7740



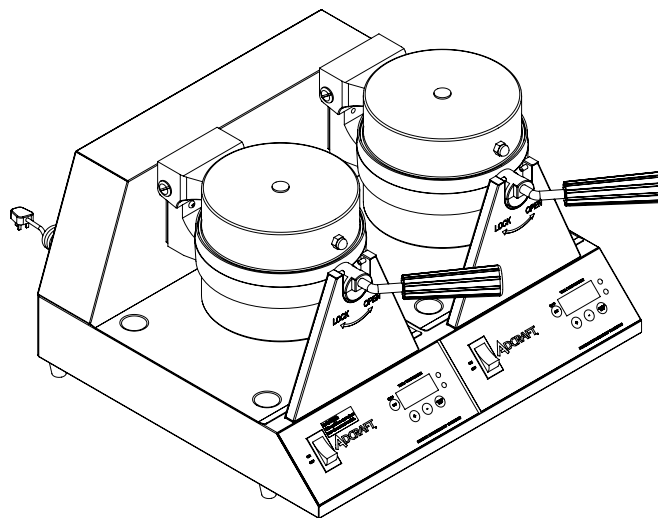
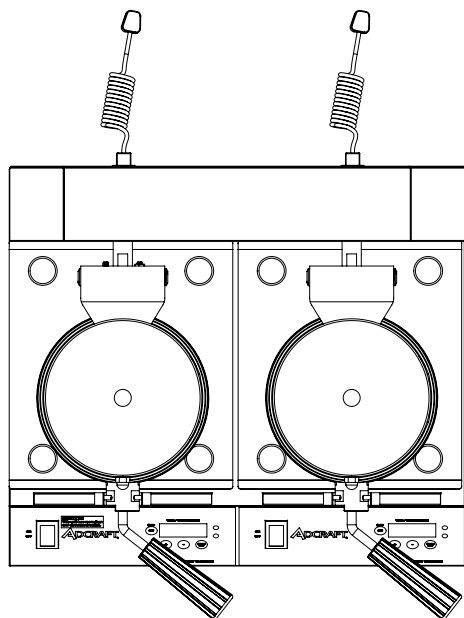
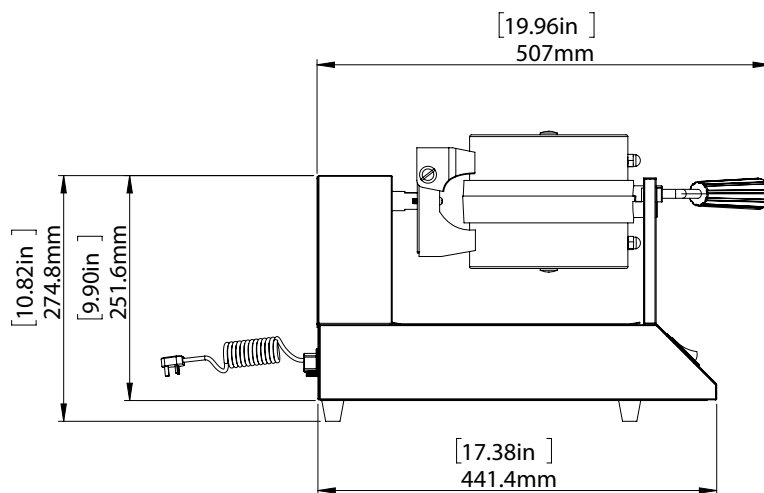
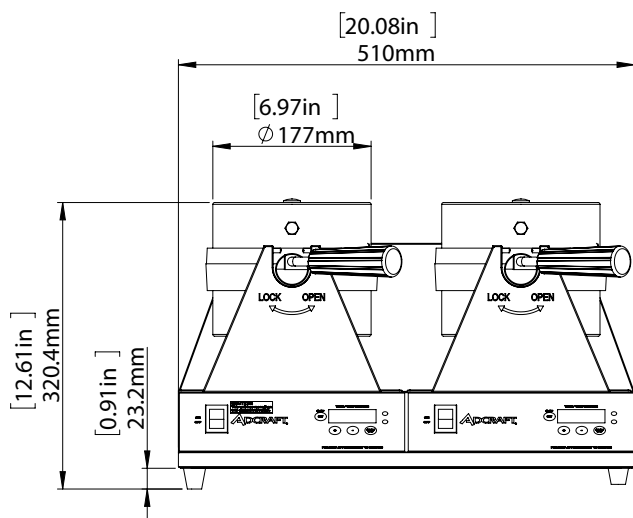


Adcraft Double Belgian Waffle Maker, 7", in Stainless Steel

BWM7R2S

FRONT

SIDE



TOP

Waffle Maker

Control Type	Cooking Area Depth x Width (in)	Waffle Shape	Assembled Dimensions L x W x H (in)	Package Dimensions L x W x H (in)	Item Weight (lb)	Shipping Weight (lb)
Digital	7" x 7"	Circular	19.96" x 20.08" x 12.61"	20.28" x 22.64" x 15.16"	19.1	49.0

Due to periodic changes in designs, methods, procedures, policies and regulations, the specifications contained in this document are subject to change without notice. While we exercise good faith efforts to provide information that is accurate, we are not responsible for errors or omissions in information provided or conclusions reached as a result of using the specifications. By using the information provided, the user assumes all risks in connection with such use.

08.22.25