

Black Diamond Countertop Display Freezer, Single Glass Door, 1.4 cu ft, in Black

CDFZ-1D/1.4



Black Diamond's countertop merchandiser freezer offers reliability and value, perfect for cafes, delis, and convenience stores. Its PVC glass door ensures durability and optimal product visibility. With a 1.4 cubic foot capacity, it efficiently stores frozen foods. Maintaining a temperature range of -13° to 0°F, it ensures items stay fresh. The mechanical control and eco-friendly R290 refrigerant simplify operation and maintenance, making it a practical choice for busy environments.

FEATURES AND CONSTRUCTION

- 1.4 cu ft capacity provides ample space for frozen foods and treats
- 0.25 horsepower compressor ensures efficient cooling performance
- Constructed with a durable black coated steel exterior
- Temperature range from -13° to 0°F for optimal freezing
- Eco-friendly R290 refrigerant for efficient cooling
- Operates on 110V with a NEMA 5-15 plug for convenience
- Includes 3 adjustable shelves for flexible storage options
- Compact design fits perfectly on countertops
- Single glass door enhances product visibility
- Brilliant LED lighting illuminates interior

ELECTRIC

110V / 60Hz / 1Ph

Cord Length (Inches): 70.87"

Plug Type: NEMA 5-15P

Cord set included

NEMA 5-15P



3RD PARTY APPROVALS



WARRANTY (USA / CANADA)

1 Year Warranty on Parts & Labor, 1 Year Warranty on Compressor

Contact Admiral Craft Equipment for details at 1-877-672-7740



STORAGE CAPACITY

- Cubic Feet: 1.4 cu. ft.

TEMPERATURE

- Holding Temperature (Fahrenheit): -13° - 0°

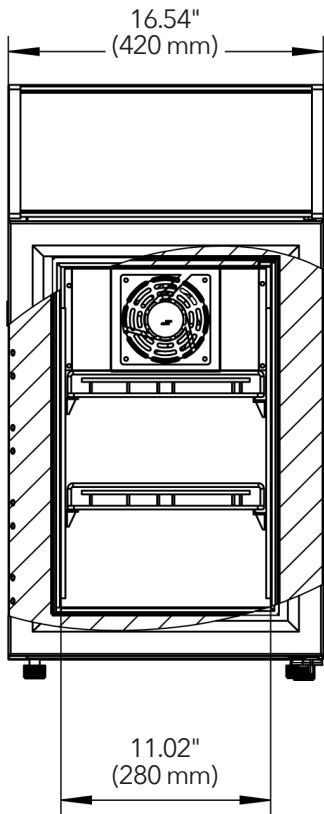
These models are designed to operate in an environment where temperature and humidity do not exceed 75°F (24°C) and 55% relative humidity

Black Diamond Countertop Display Freezer, Single

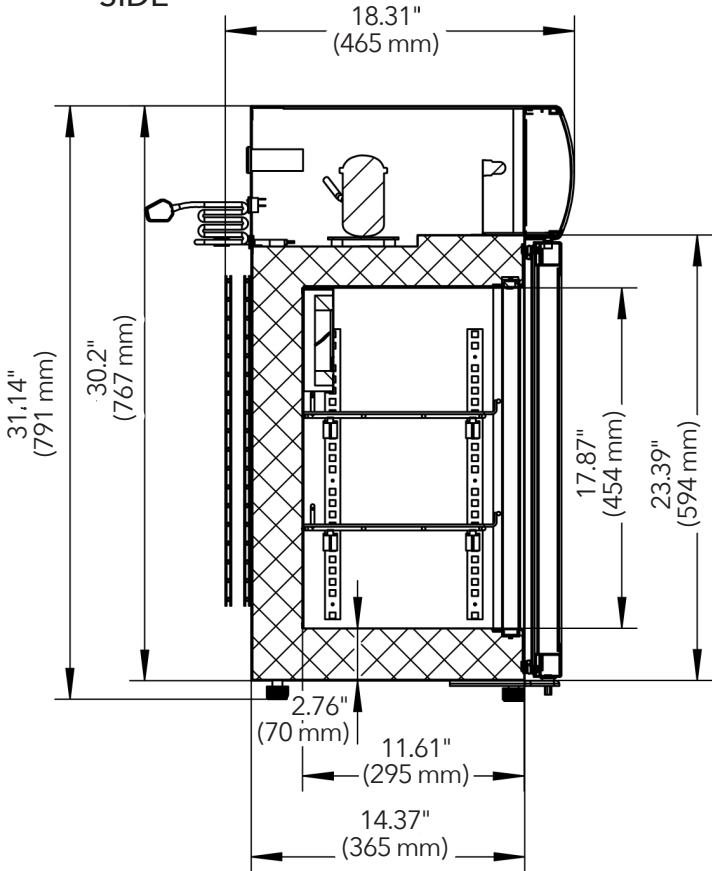
BLACK◆DIAMOND® Glass Door, 1.4 cu ft

CDFZ-1D/1.4

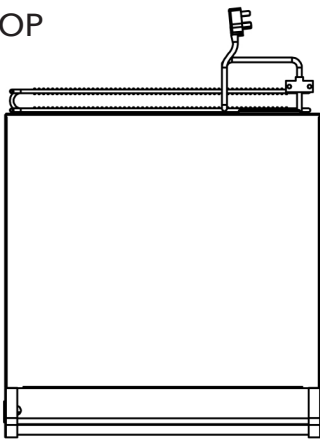
FRONT



SIDE



TOP



Merchandiser

Doors	Shelves	Amps	HP	Refrigerant	Capacity	Assembled Dimensions (in)	Item Weight (lbs)	Shipping Weight (lbs)
1	3	1.35A	1/4	R290 1.77 oz	1.4 cu. ft.	18.50" x 16.50" x 31.20"	68.3	72.8

Due to periodic changes in designs, methods, procedures, policies and regulations, the specifications contained in this document are subject to change without notice. While we exercise good faith efforts to provide information that is accurate, we are not responsible for errors or omissions in information provided or conclusions reached as a result of using the specifications. By using the information provided, the user assumes all risks in connection with such use.