

BLACK◆DIAMOND®

Project Name: _____

Location: _____

Item #: _____

Qty: _____

Black Diamond Countertop Display Freezer, Single Glass Door, 3.5 cu ft, in Black

CDFZ-1D/3.5



Elevate your business's frozen offerings with the Black Diamond Countertop Display Freezer, perfect for cafes, diners, and delis. Featuring a durable PVC glass door, this freezer ensures lasting performance. With a 3.5 cubic foot capacity, it maintains temperatures from -13° to 0°F, making it ideal for ice cream and frozen entrees. The mechanical control and R290 refrigerant enhance efficiency, while the compact design and easy-to-clean surfaces ensure hassle-free maintenance.

FEATURES AND CONSTRUCTION

- 3.5 cu ft capacity provides ample space for frozen foods and treats
- 0.5 horsepower compressor ensures efficient cooling performance
- Constructed with a durable black coated steel exterior
- Temperature range from -13° to 0°F for optimal freezing
- Utilizes eco-friendly R290 refrigerant
- Operates on 110V with a NEMA 5-15 plug for convenience
- Includes 4 adjustable shelves for flexible storage options
- Compact design fits perfectly on countertops
- Single glass door enhances product visibility
- Brilliant LED lighting illuminates interior

STORAGE CAPACITY

- Cubic Feet: 3.5 cu. ft.

TEMPERATURE

- Holding Temperature (Fahrenheit): -13° - 0°

These models are designed to operate in an environment where temperature and humidity do not exceed 75°F (24°C) and 55% relative humidity

ELECTRIC

110V / 60Hz / 1Ph

Cord Length (Inches): 70.87"

Plug Type: NEMA 5-15P

Cord set included

NEMA 5-15P



3RD PARTY APPROVALS



WARRANTY (USA / CANADA)

1 Year Warranty on Parts & Labor, 1 Year Warranty on Compressor

Contact Admiral Craft Equipment for details at 1-877-672-7740

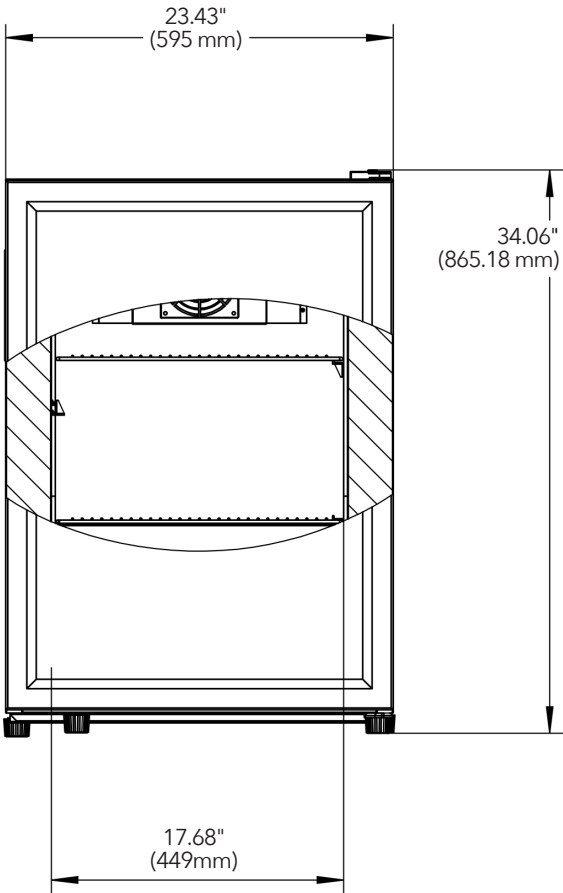


Black Diamond Countertop Display Freezer, Single

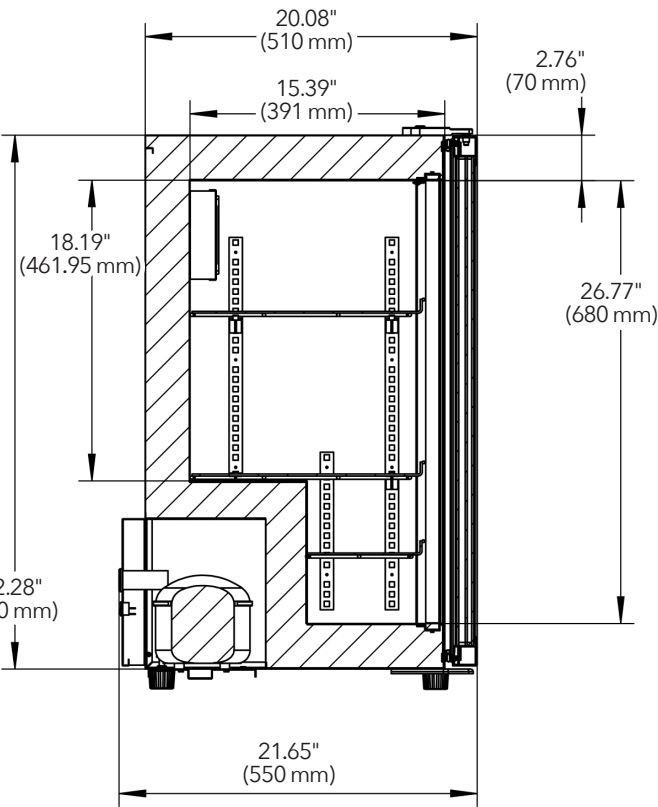
BLACK◆DIAMOND® Glass Door, 3.5 cu ft

CDFZ-1D/3.5

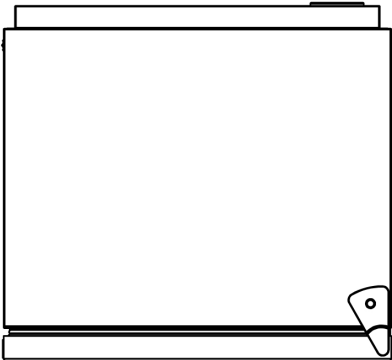
FRONT



SIDE



TOP



Merchandiser

Doors	Shelves	Amps	HP	Refrigerant	Capacity	Assembled Dimensions (in)	Item Weight (lbs)	Shipping Weight (lbs)
1	4	2.6A	1/2	R290 2.82 oz	3.5 cu. ft.	20.08" x 23.42" x 34.30"	108.0	112.4

Due to periodic changes in designs, methods, procedures, policies and regulations, the specifications contained in this document are subject to change without notice. While we exercise good faith efforts to provide information that is accurate, we are not responsible for errors or omissions in information provided or conclusions reached as a result of using the specifications. By using the information provided, the user assumes all risks in connection with such use.