

Black Diamond Countertop Display Refrigerator, Single Glass Door, 2.7 cu ft, in Black

CDRF-1D/2.7



Black Diamond's Countertop Display Refrigerator is perfect for showcasing beverages, snacks, and sandwiches in commercial settings. Its durable PVC glass door enhances visibility, while the 2.7 cubic feet capacity offers ample storage. Maintaining a temperature range of 32° to 50°F, it uses eco-friendly R600A refrigerant. Mechanical controls and manual defrost ensure easy operation, and the compact design facilitates easy cleaning and maintenance.

FEATURES AND CONSTRUCTION

- Offers a 2.7 cu ft storage capacity for versatile product display
- Features a 0.25 horsepower compressor for efficient cooling
- Constructed with a PVC glass door and black-coated steel exterior
- Maintains a temperature range of 32° to 50°F
- Uses R600A refrigerant for eco-friendly operation
- Operates on 110V with a NEMA 5-15 plug for convenience
- Includes 3 adjustable shelves for customizable storage
- Compact design fits seamlessly on countertops without casters
- Brilliant LED lighting enhances product visibility
- Foamed-in-place insulation ensures energy efficiency

ELECTRIC

110V / 60Hz / 1Ph

Cord Length (Inches): 70.87"

Plug Type: NEMA 5-15P

Cord set included

NEMA 5-15P



3RD PARTY APPROVALS



WARRANTY (USA / CANADA)

1 Year Warranty on Parts & Labor, 1 Year Warranty on Compressor

Contact Admiral Craft Equipment for details at 1-877-672-7740



STORAGE CAPACITY

- Cubic Feet: 2.7 cu. ft.

TEMPERATURE

- Holding Temperature (Fahrenheit): 32° - 50°

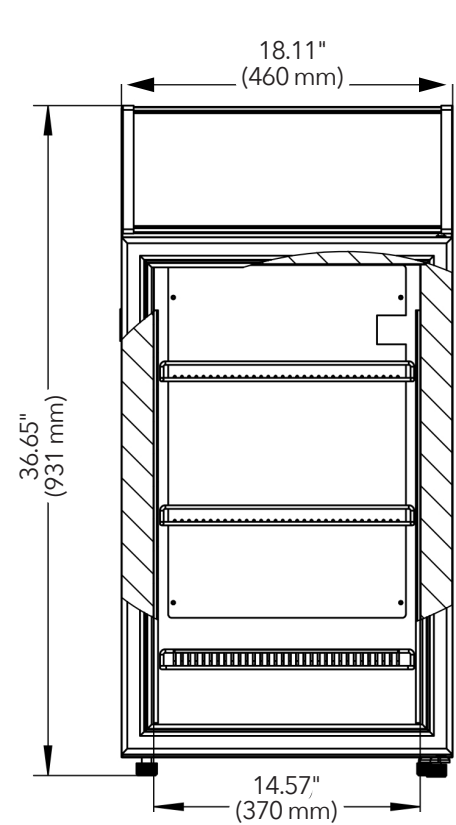
These models are designed to operate in an environment where temperature and humidity do not exceed 75°F (24°C) and 55% relative humidity

BLACK◆DIAMOND®

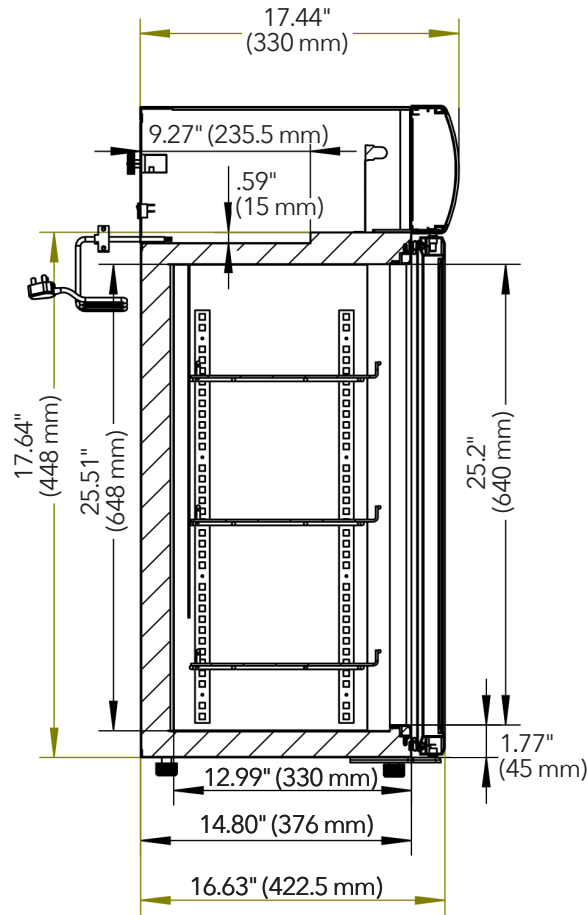
Black Diamond Countertop Display Refrigerator,
Single Glass Door, 2.7 cu ft

CDRF-1D/2.7

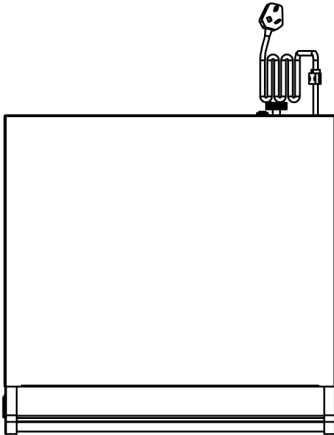
FRONT



SIDE



TOP



Merchandiser

Doors	Shelves	Amps	HP	Refrigerant	Capacity	Assembled Dimensions (in)	Item Weight (lbs)	Shipping Weight (lbs)
1	3	1.03A	1/10	R600A 1.06 oz	2.7 cu. ft.	18.50" x 18.10" x 36.70"	63.9	70.6

Due to periodic changes in designs, methods, procedures, policies and regulations, the specifications contained in this document are subject to change without notice. While we exercise good faith efforts to provide information that is accurate, we are not responsible for errors or omissions in information provided or conclusions reached as a result of using the specifications. By using the information provided, the user assumes all risks in connection with such use.