

# BLACK◆DIAMOND®

Project Name: \_\_\_\_\_

Location: \_\_\_\_\_

Item #: \_\_\_\_\_

Qty: \_\_\_\_\_

## Black Diamond Countertop Display Refrigerator, Single Glass Door, 2 cu ft, in Black

**CDRF-1D/2**



Elevate your foodservice offerings with the Black Diamond Countertop Display Refrigerator, designed to boost impulse buys. Featuring a PVC glass door and a durable black-coated steel exterior, this unit offers a 2 cubic foot capacity. Maintain product freshness with a temperature range of 32° to 50°F. The mechanical control and R600A refrigerant ensure efficient operation. Easy to clean and maintain, this merchandiser is perfect for showcasing beverages, snacks, and more.

### FEATURES AND CONSTRUCTION

- Offers a 2 cu ft storage capacity for versatile product display
- Features a 0.25 horsepower compressor for efficient cooling
- Constructed with a PVC glass door and black-coated steel exterior
- Maintains a temperature range of 32° to 50°F
- Uses R600A refrigerant for eco-friendly operation
- Operates on 110V with a NEMA 5-15 plug for convenience
- Includes 2 adjustable shelves for customizable storage
- Compact design fits seamlessly on countertops without casters
- Encourages impulse buys with eye-level product placement

### STORAGE CAPACITY

- Cubic Feet: 2 cu. ft.

### TEMPERATURE

- Holding Temperature (Fahrenheit): 32° - 50°

These models are designed to operate in an environment where temperature and humidity do not exceed 75°F (24°C) and 55% relative humidity

### ELECTRIC

110V / 60Hz / 1Ph

Cord Length (Inches): 70.87"

Plug Type: NEMA 5-15P

Cord set included

**NEMA 5-15P**



### 3RD PARTY APPROVALS



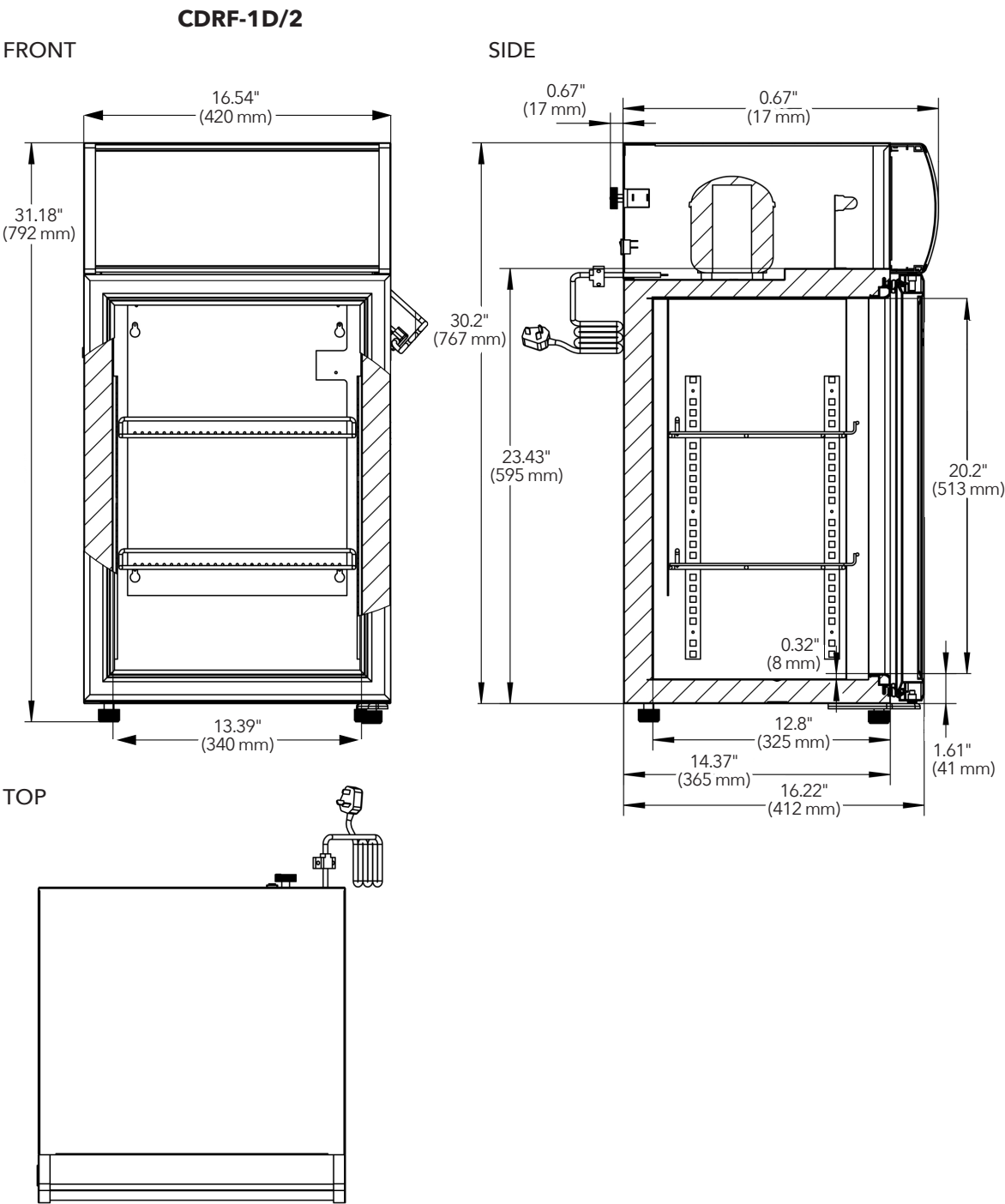
### WARRANTY (USA / CANADA)

1 Year Warranty on Parts & Labor, 1 Year Warranty on Compressor

Contact Admiral Craft Equipment for details at 1-877-672-7740



Black Diamond Countertop Display Refrigerator,  
BLACK♦DIAMOND® Single Glass Door, 2 cu ft



Merchandiser

Doors	Shelves	Amps	HP	Refrigerant	Capacity	Assembled Dimensions (in)	Item Weight (lbs)	Shipping Weight (lbs)
1	2	0.83A	1/10	R600A 0.81 oz	2 cu. ft.	18.10" x 16.50" x 31.20"	50.0	54.5

Due to periodic changes in designs, methods, procedures, policies and regulations, the specifications contained in this document are subject to change without notice. While we exercise good faith efforts to provide information that is accurate, we are not responsible for errors or omissions in information provided or conclusions reached as a result of using the specifications. By using the information provided, the user assumes all risks in connection with such use.