

# ADVANTAGE™ AD HAND & HAIR DRYER SPECIFICATIONS

NEW!



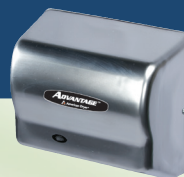
White ABS



White Steel



Black Graphite



Satin Chrome



Stainless Steel

THE **ADVANTAGE SERIES** IS THE PERFECT REPLACEMENT FOR THE TRADITIONAL HAND AND HAIR DRYER WITH MORE POWER & FEATURES IN A COMPACT DESIGN.

## FEATURES:

- DRIES IN 25 SECONDS
- UNIVERSAL VOLTAGE
- FIXED NOZZLE
- 5 YEAR WARRANTY

## Construction Features:

**UNIVERSAL VOLTAGE** – The new **ADVANTAGE AD** series can be connected to any voltage from 100 - 240 volts, 50/60Hz. The dryer configures itself to your voltage, making installation easier.

### HEAVY DUTY ONE-PIECE COVER OPTIONS

- Flame retardant white ABS
- Steel with white epoxy finish (M)
- Steel with black graphite epoxy finish (BG)
- Steel with satin chrome finish (C)
- Stainless Steel with #4 brush finish (SS)

**VANDAL RESISTANT** – Tamper resistant screws secure cover to base. Air intake vents are shielded for additional safety.

**MOTOR** – Heavy duty universal motor. 1/8 HP, 4,800 RPM. Automatic thermal protector.

**AUTOMATIC SENSOR** – Ultra energy efficient microprocessor-controlled sensor turns dryer on when hands are under the outlet for up to 35 seconds. **Stand by power is only one watt.** RoHS compliant lead-free design.

**HEATING ELEMENT** – Constructed of NiChrome resistance wire with thermal protector. Heating element operates in the black range for maximum life.

## specifications **ADVANTAGE**

|                    |                                  |
|--------------------|----------------------------------|
| AIR FLOW           | 180 CFM (Cubic Feet per Min.)    |
| AIR VELOCITY       | 7,300 LFM (Linear Feet per Min.) |
| AIR TEMP           | 120°F at 72°F Ambient            |
| SOUND LEVEL        | 67dB (Quietest in its class)     |
| DIMENSIONS SURFACE | 10-1/8"W x 9-3/8"H x 5-5/8"D     |

### WARRANTY:

5-year limited warranty.  
Includes **same day** factory repair or part replacement.  
See owner's manual for details.

### ADVANTAGE MODEL REFERENCE CHART

| ADVANTAGE MODEL REFERENCE CHART |             |                |              |                 | ELECTRICAL                                     |
|---------------------------------|-------------|----------------|--------------|-----------------|--|
| ABS White                       | Steel White | Black Graphite | Steel Chrome | Stainless Steel | <b>Universal Voltage</b><br>100-240 V 50/60 Hz |
| AD90                            | AD90-M      | AD90-BG        | AD90-C       | AD90-SS         |  |

12.5 A max. @ 120 V  
6.5 A max. @ 240 V

Hair drying with 80 second cycle add (H) after model number.  
For ADA accessories, visit [americandryer.com](http://americandryer.com)

NEW

## ACCESSORIES



ADA-WG\*  
WALL GUARD



ADA-RK\*  
RECESS KIT



AP  
ADAPTER PLATE

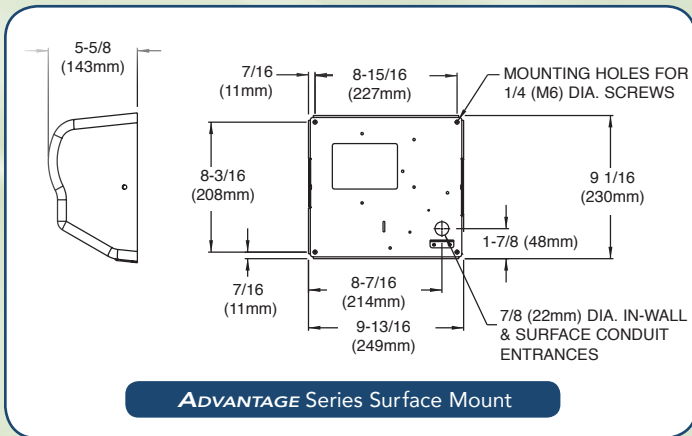
\* Not for use with HAIR dryers  
For ADA Accessories, visit [americandryer.com](http://americandryer.com)

# ACCESSORIES



|  |   |                            |
|--|---|----------------------------|
| <b>ADA-WG</b><br>WALL GUARD  | <b>ADA-RK</b><br>RECESS KIT                       | <b>AP</b><br>ADAPTER PLATE |
| <b>Accessories Reference Chart</b>   |   |                            |
| <b>ADA-WG*</b>   | ADA Compliant seamless stainless steel wall guard |                            |
| <b>ADA-RK*</b>   | ADA Compliant seamless stainless steel recess kit |                            |
| <b>AP</b>  | Stainless steel universal adapter plate           |                            |
| * Not for use with HAIR dryers<br>For more information, visit <a href="http://americandryer.com">americandryer.com</a> |   |                            |

## ADVANTAGE™ SERIES MOUNTING DIAGRAM



### Recommended Mounting Heights from Bottom of Dryer to Finished Floor

|                      | Men | Women | Children  | Disabled |
|----------------------|-----|-------|-----------|----------|
| All Hand Dryers      | 44" | 42"   | 32" - 42" | 36"      |
| Advantage HAIR Dryer | 74" | 68"   | 48" - 68" | 48"      |



American Dryer, Inc.  
33067 Industrial Road | Livonia, MI 48150 | U.S.A.  
Toll Free 800.485.7003 U.S. | Ph: 734.421.2400 | Fax 734.421.5580

Web: [www.americandryer.com](http://www.americandryer.com)  
Email: [sales@americandryer.com](mailto:sales@americandryer.com)  
© American Dryer, Inc. All Rights Reserved  
Revised July 2013

## SAVE 95% VERSUS PAPER TOWELS

**ADVANTAGE** Series Hand dryers achieve up to a 95% cost savings over paper towels. These savings are realized by eliminating the maintenance and operating expenses associated with paper or linen towels.

*"Our school saved over \$21,000 last year with American Dryer!"*

### COST ANALYSIS FOR A PUBLIC SCHOOL

|                            |                 |
|----------------------------|-----------------|
| Paper Towel Usage          | 800 CASES       |
| Total Paper Costs          | \$24,000        |
| Hand Dryer Operating Costs | \$2,453         |
| <b>ANNUAL SAVINGS</b>      | <b>\$21,547</b> |
| Payback Time               | 11 MONTHS       |

### COST ANALYSIS FOR A RESTAURANT

|                            |                |
|----------------------------|----------------|
| Paper Towel Usage          | 90 CASES       |
| Total Paper Costs          | \$2,025        |
| Hand Dryer Operating Costs | \$96           |
| <b>ANNUAL SAVINGS</b>      | <b>\$1,929</b> |
| Payback Time               | 12 MONTHS      |

## GENERAL INFORMATION

### DRYER PLACEMENT:

Dryers should be placed at least 2 feet apart and at least 12" from washbasin. Do not install dryer over washbasin. Automatic dryers should be at least 18" above any projection which may interfere with the operation of the automatic sensor. In congested areas the dryers should be located to create a flow from the washbasin to dryer to exit. Recommended mounting heights are shown in the table below.

### DRYER INSTALLATION:

Dryers must be installed by a licensed electrician. A single phase dedicated 15 amp or 20 amp electrical line is required. Dryer must be properly grounded. One side of dryer should be mounted to a stud. All surface mount dryers are provided with conduit entrances for both in-wall and surface wiring.

### QUANTITY ESTIMATE, HAND DRYER:

Average traffic washroom.....1 dryer per 2 washbasins  
Heavy traffic washroom.....1 dryer per washbasin  
54" wash fountain.....4 dryers per sink

SHIPPING WEIGHT: AD 8 lbs, AD-M/BG/C/SS 10 lbs

Printed on Recycled Paper

