

JOB \_\_\_\_\_ ITEM # \_\_\_\_\_ QTY # \_\_\_\_\_

**MODEL NUMBER**

GSM L



GSM L



**STANDARD FEATUR**

- ◆ Machine stand and upper housing made from patented glass antimicrobial fiber composite with embedded silver ions
- ◆ Powerful 1/2 HP gear-driven motor
- ◆ Optimum plate speed of 336 RPMs
- ◆ Double safety interlock - hopper head and food pusher
- ◆ Ergonomic 45° food hopper incline
- ◆ Removable hopper head and food pusher (no tools required)
- ◆ Discs are antimicrobial durable composite fiberglass & dishwasher safe
- ◆ Stainless steel knives are hardened, ground, leathered and hand-polished
- ◆ 50 discs are available

**CAPACITY**

Processes up to 800-1200 lbs. per hour.

**MOTOR**

1/2 HP, 115V-60HZ-1 Phase, 3 amps, automatic reset thermal overload protection.

**ON/OFF LATCH (INTERLOCKS)**

The hopper latch serves as the on/off switch and interlock for the hopper head. The unit will not operate with the hopper head open or unlatched.

**GEAR DRIVE**

Sealed planetary gear transmission with permanent grease lubrication. Output 336 RPMs.

**DESIGN**

Ergonomic 45° incline for convenient feeding, cutting and ejection of food. Separate food hopper permits continuous cutting of long products. The food pusher enables even pressure to be applied when cutting food. The hopper head, food pusher and cutting discs are easily removable, without the use of tools, for quick cleaning.

**UNIT COMPARISONS**

	GSM L	GSM 5 Star	XL, XL Star, & MultiCut-240
HP	1/2	1/2	1
RPMs	336	340	280
Upper Housing	Antimicrobial Fiber Composite	Stainless Steel	Cast Aluminum
Blades Available	50	52	42,44,42
Antimicrobial Protection Pusher	✓	✓	✓
Antimicrobial Protection Blades	✓	✓	

**DIMENSIONS**

- ◆ Overall Depth = 19.92"
- ◆ Overall Width = 9.72"
- ◆ Overall Height = 23.58"
- ◆ Kidney Shaped Hopper = 2.4" x 7.54"
- ◆ Continuous Feed Hopper = 2.05" diameter
- ◆ Freight Class: 85
- ◆ Net Weight: 41 lbs.
- ◆ Shipping Weight: Approx. 43.65 lbs.
- ◆ Shipping Dimensions: Approx. 29.92"L x 14.57"W x 16.93"H

**CORD AND PLUG**

Attached six-foot flexible 3-wire cord and plug fits a grounded receptacle.

**CONSTRUCTION**

The housing, removable hinged hopper head, food hoppers, removable food pusher and ejector plate are made of patented glass antimicrobial fiber composite with embedded silver ions.

There are 50 cutting discs available. The discs are antimicrobial durable composite fiberglass. The knives are hardened, ground, leathered and hand-polished to a razor sharp edge for precision cutting and long life.

**WARRANTY**

Two-years parts and labor.

Five-year warranty on motor and gear ONLY.

**SPEC T-1A**

**PIPER PRODUCTS**  
 BUILT TO LAST  
[www.piperonline.net](http://www.piperonline.net)

300 S. 84th Avenue  
 Wausau, WI 54401  
 Phone: 800-544-3057  
 Fax: 715-842-3125



F1



G3



0



HS



SM



14, 17, 19

Slicing		inches	mm
<input type="checkbox"/>	F1-5	1/32	1
<input type="checkbox"/>	F2-5	5/64	2
<input type="checkbox"/>	G3-5	1/8	3
<input type="checkbox"/>	G4-5	5/32	4
<input type="checkbox"/>	G6-5	15/64	6
<input type="checkbox"/>	G8-5	5/16	8
<input type="checkbox"/>	G10-5	3/8	10
<input type="checkbox"/>	G12-5	15/32	12
<input type="checkbox"/>	SU5-5*	3/16	5
<input type="checkbox"/>	SU7-5*	9/32	7
<input type="checkbox"/>	TO-5	3/16	5

\*(SU discs are wavy slices)

Shredding		inches	mm
<input type="checkbox"/>	000	33/64	13
<input type="checkbox"/>	00	7/16	11
<input type="checkbox"/>	0	23/64	9
<input type="checkbox"/>	1	9/32	7
<input type="checkbox"/>	2	15/64	6
<input type="checkbox"/>	3	3/16	5
<input type="checkbox"/>	4	5/32 & 5/64	4,2
<input type="checkbox"/>	6	1/8 & 5/16	11
<input type="checkbox"/>	7	1/8	3
<input type="checkbox"/>	9	5/64 & 3/16	2,5
<input type="checkbox"/>	10	5/64 & 63/64	2,25
<input type="checkbox"/>	11	5/64	2
<input type="checkbox"/>	12	1/32 & 5/16	1,8
<input type="checkbox"/>	13	1/32 & 3/16	1,5

Shaving		inches	mm
<input type="checkbox"/>	HS-5	1/64	.5

Sickle Disc		inches	mm
<input type="checkbox"/>	SM1.5-5	1/16	1.5
<input type="checkbox"/>	SM2.5-5	3/32	2.5
<input type="checkbox"/>	SM3.5-5	9/94	3.5
<input type="checkbox"/>	SM4.5-5	11/64	4.5
<input type="checkbox"/>	SM5.5-5	7/32	5.5
<input type="checkbox"/>	SM6.5-5	1/4	6.5



W6



S2



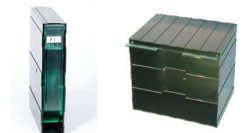
PA4



BT7



23



SCV-1

SCH-3



DSI

WR-3

Dicing		inches	mm
<input type="checkbox"/>	W6-5	1/4 x 1/4 x 5/16	6 x 6 x 8
<input type="checkbox"/>	W8-5	5/16	8
<input type="checkbox"/>	W10-5	3/8	10
<input type="checkbox"/>	W14-5	9/16	14
<input type="checkbox"/>	W20-5 *	25/64 x 25/64 x 25/64	20 x 20 x 20

\*Soft Only Products

Julienne/Alumettes		inches	mm
<input type="checkbox"/>	S1.5-5	1/16	1.5
<input type="checkbox"/>	S2-5	5/64	2
<input type="checkbox"/>	S3-5	1/8 x 5/64	3 x 2
<input type="checkbox"/>	PA4K-5	5/32	4
<input type="checkbox"/>	PA5K-5	3/16 x 5/32 5 x 4	5
<input type="checkbox"/>	WS	15/64	6

French Fry		inches	mm
<input type="checkbox"/>	BT6-5	15/64	6
<input type="checkbox"/>	BT7-5	9/32	7
<input type="checkbox"/>	BT8-5	5/16	8
<input type="checkbox"/>	BT10-5	3/8	10

Grating		inches	mm
<input type="checkbox"/>	23	5/64 3/16	2.5

Curly Cut		
<input type="checkbox"/>	14	Parmesan
<input type="checkbox"/>	17	Curly
<input type="checkbox"/>	19	Fondue 5/8" 16 mm

	Option	Description
<input type="checkbox"/>	SCV-1	Vertical disc storage case (1 disc) *Will not hold cubing or dicing discs
<input type="checkbox"/>	SCH-3	Horizontal disc storage case (3 discs)
<input type="checkbox"/>	SCH-4	Horizontal disc storage case (4 discs)
<input type="checkbox"/>	SCV-7/3	Vertical disc storage rack (3 discs)
<input type="checkbox"/>	WR3	Three peg wall rack
<input type="checkbox"/>	DSI	<<Double Shot>> Insert

T-1A SPEC

**PIPER PRODUCTS**  
BUILT TO LAST  
[www.piperonline.net](http://www.piperonline.net)

300 S. 84th Avenue  
Wausau, WI 54401  
Phone: 800-544-3057  
Fax: 715-842-3125

**LIMITED WARRANTY:** PIPER PRODUCTS warrants to the original purchaser parts and labor for a period of twelve (12) months from the date of purchase. See manufacturer's complete warranty for details.

It is our policy to build equipment which is design certified by companies that have been accredited at the Federal Level by the Occupational Safety and Health Agency (OSHA) and ANSI as a National Recognized Testing Laboratory. These companies include CSA International, Underwriters Laboratories, and the National Sanitation Foundation. However, a continuing program of product improvement makes it necessary to submit new models to the agencies as they are developed. Consequently, all models may not bear the appropriate labels at all times.

We reserve the right to change specifications and product design without notice. Such revisions do not entitle buyer to corresponding changes, improvements, additions or replacements for previously purchased equipment. Information is not for design purposes.