

**Scotsman**  
BIG CUBE

# BC0530 - 500lb Big Cube Ice Machine

Modular Big Cube Ice Machine



## Features & Benefits

- Perfectly square, individual big cubes
- Big cubes are slow melting, which cools drinks without diluting them
- Produces 108 cubes every harvest cycle - approximately every 30 minutes
- Horizontal evaporator minimizes impurities resulting in clearer cubes and reduced scale buildup between cleanings
- Unit specific QR code for quick access to service manuals, cleaning guides and warranty history
- Heavy duty stainless steel exterior panels for maximum durability and lifespan
- Designed, engineered and assembled in the USA



Perfectly square, slow-melting individual big cubes



Unit specific QR code for quick access to service manuals, cleaning guides and warranty history



## 24 Hour Volume Production

### Air Cooled

70°F/21°C	Air	90°F/32°C
50°F/10°C	Water	70°F/21°C
428/194		383/174
lb/kg		lb/kg



## Modular Bin Options

Model Number*	Dimensions W" x D" x H"	Bin Application		Ship Weight lb/kg
		Capacity lb/kg	Finish	
B330P	30 x 34 x 37**	344/156	Poly	130/59
B530S or P	30 x 34 x 44**	536/244	Metallic or Poly	150/68

\* Contact Scotsman for bin top requirements. \*\* Add 6" Height for bin legs.



B330P



B530S



## Big Cube Ice



Big cubes are ideal for premium cocktails, clubs and restaurants.

Big Cube  
1 1/4" x 1 1/4" x 1 1/4"  
(3.18 x 3.18 x 3.18 cm)



## Certification



## Warranty

- 3 years parts and labor on all components.
- 5 years parts on the evaporator and compressor.
- Warranty valid in North, South & Central America for commercial installations.
- Contact factory for warranty in other regions.
- Residential Applications: 1 year parts and labor

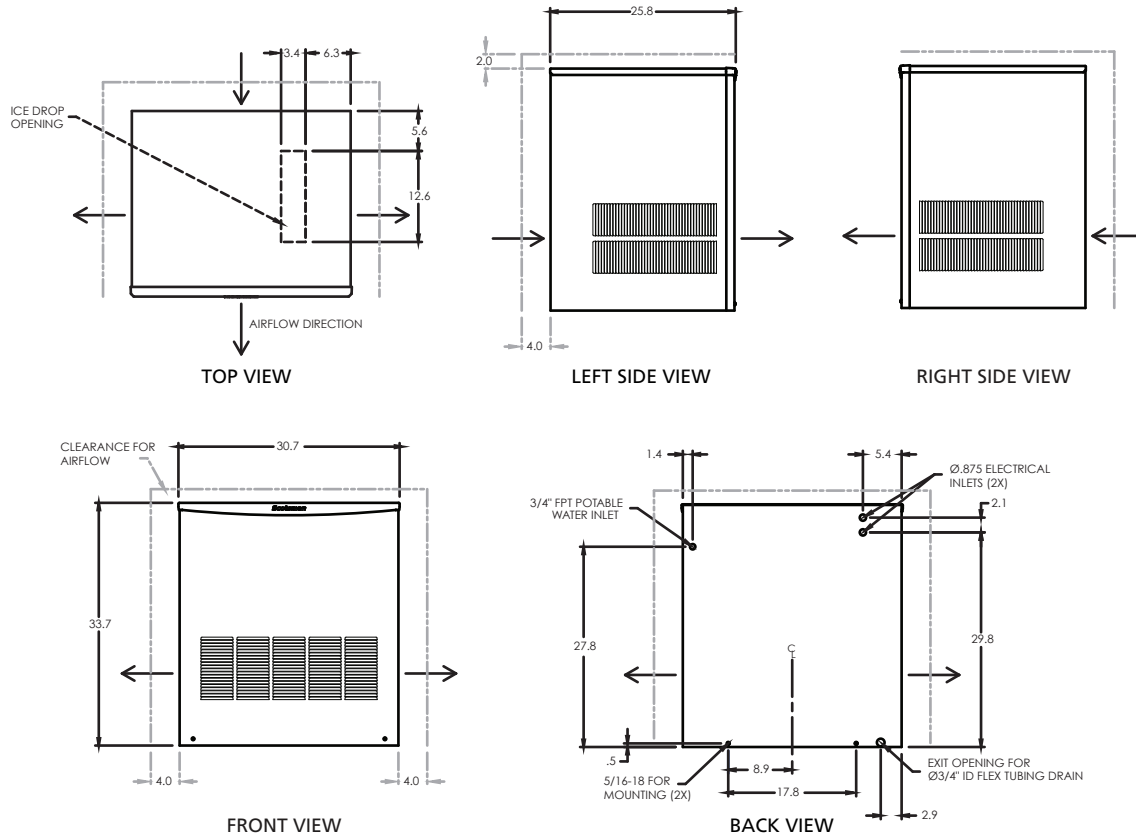
**Scotsman**

- 101 Corporate Woods Parkway, Vernon Hills, IL 60061 •
- 1-800-SCOTSMAN • Fax: 847-913-9844 • www.scotsman-ice.com • customer.relations@scotsman-ice.com •

BC0530 - 500lb Big Cube  
Ice Machine

# BC0530 - 500lb Big Cube Ice Machine

Modular Big Cube Ice Machine



BC0530 - 500lb Big Cube Ice Machine



## Specifications

Model Number	Condenser Unit	Basic Electrical Volts/Hz/Phase	Max. Fuse Size or HACR Circuit Breaker (amps)	Circuit Wires	Min. Circuit Ampacity	Energy Consumption kWh/100 lb (45.4 kg) 90°F(32°C)/70°F(21°C)	Water Usage Gallons/100 lb (liters/45.4 kg)	
							Potable 90°F(32°C)/70°F(21°C)	Condenser 90°F(32°C)/70°F(21°C)
BC0530A-1	Air	115/60/1	25	2	19.6	5.92	14.2	-



## All Models

### Dimensions (W x D x H):

Unit: 30.7" x 25.8" x 33.7"  
(77.9 x 65.5 x 85.6 cm)

Shipping Carton: 36" x 31" x 41"  
(91.4 x 78.7 x 104.1 cm)

Shipping Weight: 235 lb / 107 kg  
BTUs per hour: 6,704

Refrigerant: R-404A



## Accessories

Model Number	Description
KBCSTK30	Stacking kit – up to 3 units high

Scotsman recommends all ice machines have water filtration. See Scotsman water filter specification sheet for details.



## Operating Requirements

	Minimum	Maximum
Air Temperatures	50°F (10°C)	100°F (38°C)
Water Temperatures	40°F (4.4°C)	100°F (38°C)
Remote Cond. Temps	-20°F (-29°C)	120°F (49°C)
Water Pressures	20 PSIG (1.4 bar)	80 PSIG (5.5 bar)
Electrical Voltage	-5%	+10%