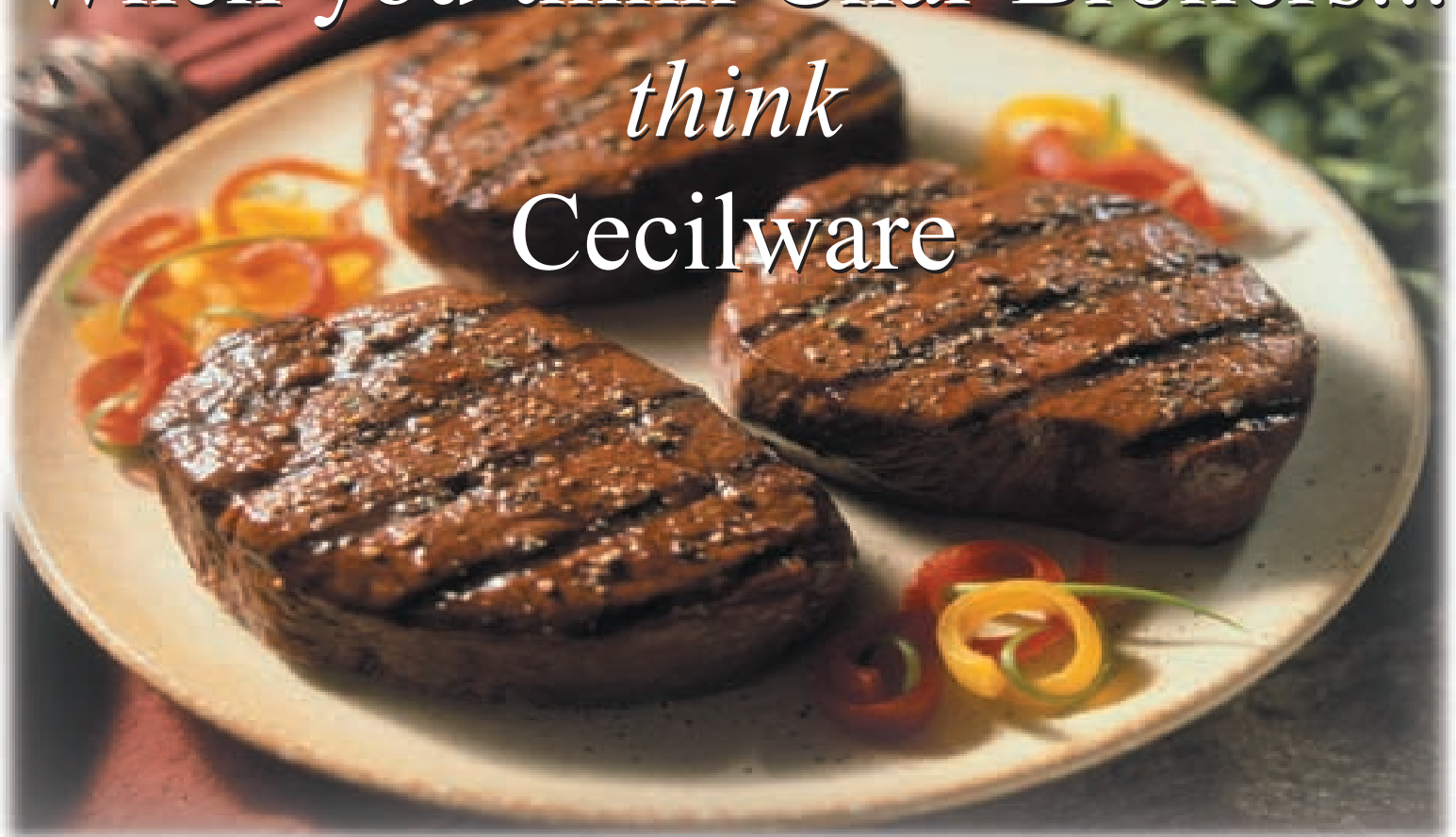


When you think Char Broilers...

think
Cecilware



Performance and durability is what you can expect from a Cecilware product.

Model#	W x H	Total BTU	No. of Burners	Ship. Wt.
BC-1812	12" x 11.25"	17,000	1	48 lbs.
BC-1824	24" x 11.25"	34,000	2	90 lbs.
BC-1836	36" x 11.25"	51,000	3	124 lbs.
CCB-1812	12" x 11.25"	25,000	2	51 lbs.
CCB-1824	24" x 11.25"	50,000	4	95 lbs.
CCB-1836	36" x 11.25"	75,000	6	128 lbs.

Depth: 19.5" Please Specify Natural or L.P. Gas

Features Include:

- ✓ Durable cast iron burners front mount for easy cleaning.
- ✓ Cast iron fire grate and top cooking grate.
- ✓ Unibody construction with heavy gauge steel.
- ✓ Stainless steel front panel.
- ✓ Easy removable non-corrosive aluminum drip pan.
- ✓ Re-usable lava rock briquettes for real charcoal flavor.
- ✓ Supplied with adjustable NSF approved legs.
- ✓ Design A.G.A. Certified and NSF listed, MEA list
- ✓ Optional splash guard and grate tilt.



Cecilware Corporation
43-05 20th Ave. LIC, NY 11105
Tel: 800.935.2211 718.932.1414 Fax: 718.932.7860
Visit us on the internet: www.cecilware.com

