

**Short Form Specifications**

Eagle Bottle Coolers, model \_\_\_\_\_. Foamed-in-place high density polyurethane insulation. Steel cabinet exterior wrapped in durable black vinyl. Top features stainless steel full-length countertop with 1/2" polymer edge, and lockable stainless steel sliding covers, each with extruded pull handles. Comes with removable bottle opener and cap catcher (#BPR-JBC-95 has two), painted aluminum interior, and plastic coated stainless steel dividers (except #BPR-JBC-25). Easily accessible condensing unit. Self-contained refrigeration. Forced-air cooling. Auto defrost. 7½-ft. cord and NEMA 5-15 plug.

Item #:	_____
Model #:	_____
Project #:	_____
SIS #:	_____

EG8185 Rev. 12/16

**Design & Construction Features**

- Stainless steel countertop with 1/2" polymer edge.
- Lockable stainless steel sliding covers.
- Black vinyl-clad cabinet.
- Painted aluminum interior.
- Lengths available range from 26½" to 95".
- Includes removable bottle opener and cap catcher\*.
- 8' cord with NEMA 5-15P plug.
- 120-volt, 60-cycle, single-phase
- Self-contained refrigeration maintains temperatures at 33°F to 38°F.
- Forced-air cooling.
- Auto defrost\*\*.

\* #BPR-JBC-95 features two removable bottle openers & cap catchers.  
 \*\* Auto frost included on all units except #BPR-JBC-25

*New* **Bottle Coolers**  
 Here to serve the coldest drinks in town!

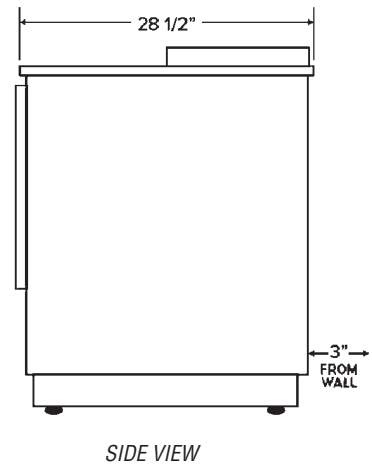
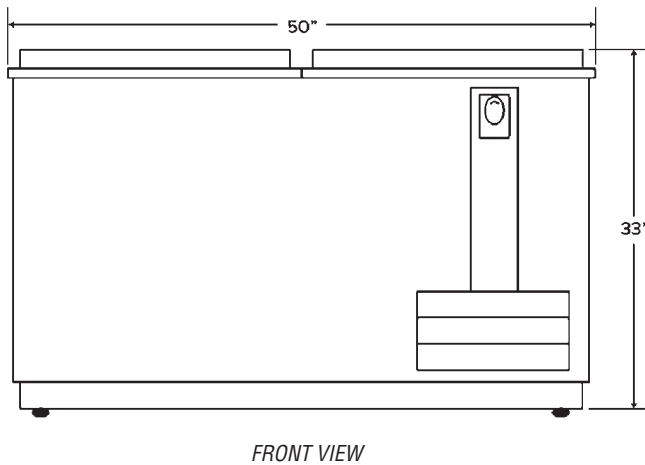
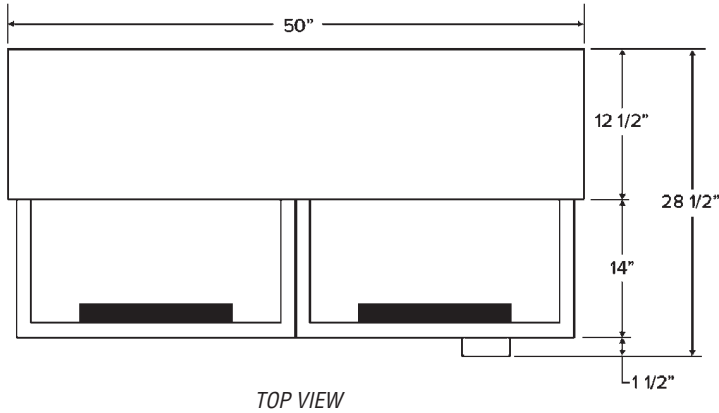


model #BPR-JBC-50

*There's nothing like a cold beverage—ask your customers! Eagle's new Bottle Coolers are here to serve! Positive airflow cools bottles on top first, and the painted aluminum interior keeps them cold for a long time. The self-contained refrigeration system maintains temperatures between 33°F and 38°F. Also, the stationary side of the stainless steel top, with 1/2" edge, doubles as a countertop. The other half features two individual lockable stainless steel slide covers. For added convenience, removable bottle openers & cap catchers are featured.*

For custom configuration or fabrication needs, contact the **SpecFAB**<sup>®</sup> Division.  
 Phone: (302) 653-3000. FAX: (302) 653-2065.  
 E-mail: quotes@eaglegrp.com

# Bottle Coolers



(MODEL #BPR-JBC-50 SHOWN)

width	length	height	# of sliding	capacities		electrical data*	model #	NET price
in. mm	in. mm	in. mm	covers	12-oz. btls	12-oz. cans			
26 <sup>3</sup> / <sub>4</sub> " 688	26 <sup>5</sup> / <sub>8</sub> " 677	34 <sup>1</sup> / <sub>4</sub> " 869	1	5 cases	7 cases	1/5-HP, 120V, 2.3A	<b>BPR-JBC-25</b>	<b>\$921</b>
26 <sup>3</sup> / <sub>4</sub> " 688	49 <sup>1</sup> / <sub>2</sub> " 1257	34 <sup>1</sup> / <sub>4</sub> " 869	2	16 <sup>1</sup> / <sub>2</sub> cases	24 cases	1/3-HP, 120V, 8.0A	<b>BPR-JBC-50</b>	<b>1174</b>
26 <sup>3</sup> / <sub>4</sub> " 688	64 <sup>1</sup> / <sub>2</sub> " 1638	34 <sup>1</sup> / <sub>4</sub> " 869	2	24 cases	32 cases	1/3-HP, 120V, 8.0A	<b>BPR-JBC-65</b>	<b>1460</b>
26 <sup>3</sup> / <sub>4</sub> " 688	95" 2413	34 <sup>1</sup> / <sub>4</sub> " 869	3	37 <sup>1</sup> / <sub>2</sub> cases	55 cases	1/2-HP, 120V, 8.7A	<b>BPR-JBC-95</b>	<b>2145</b>

\* All units are 60-cycle single-phase.