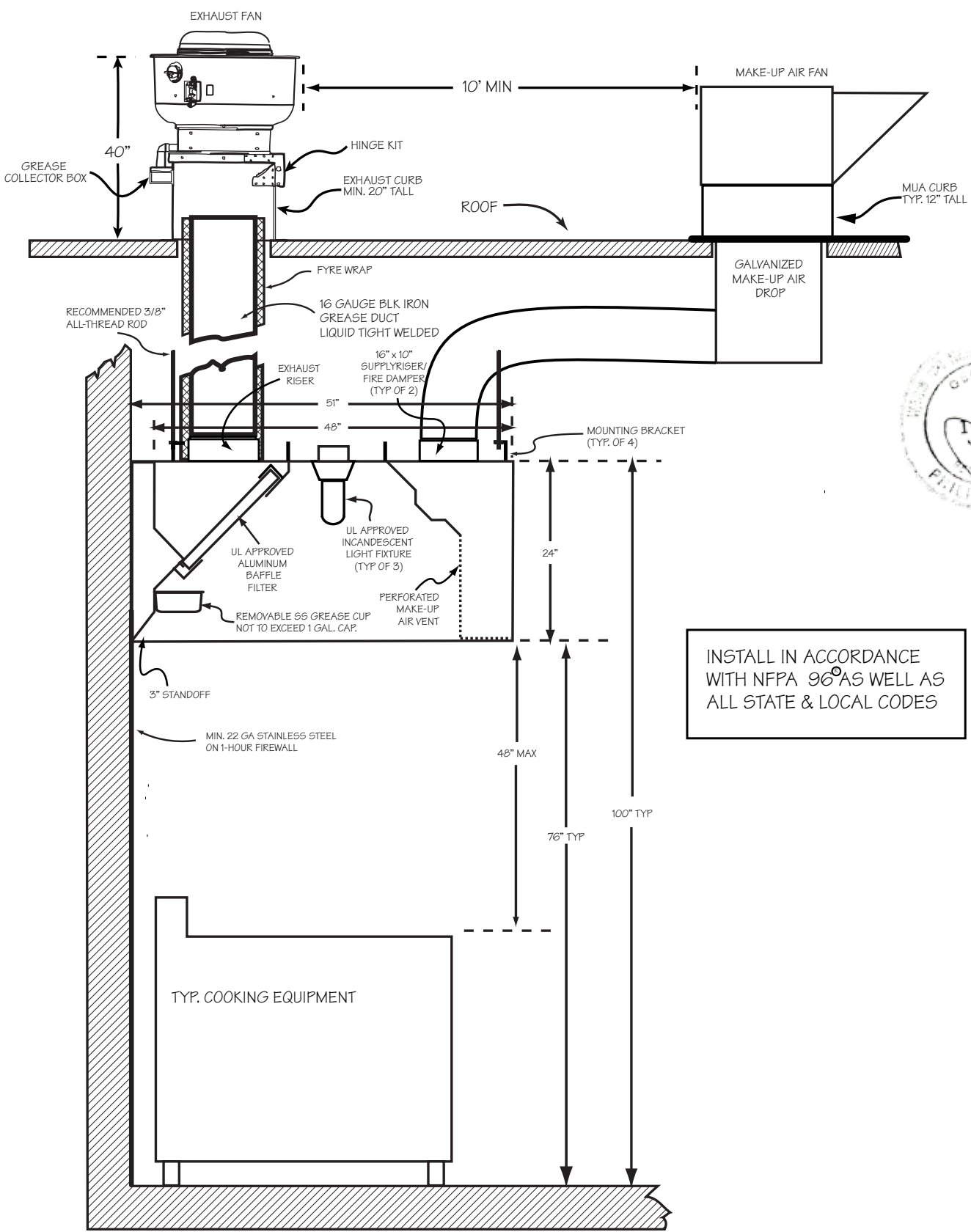


BSSM 48-13 ETL

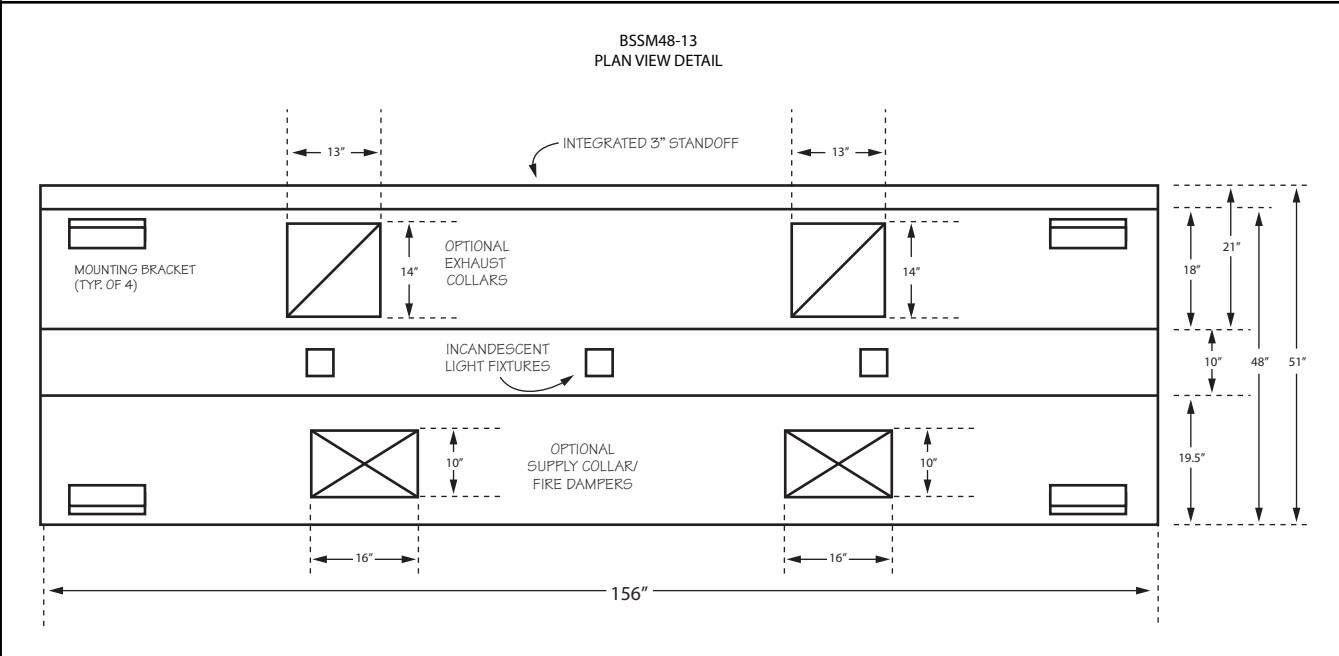
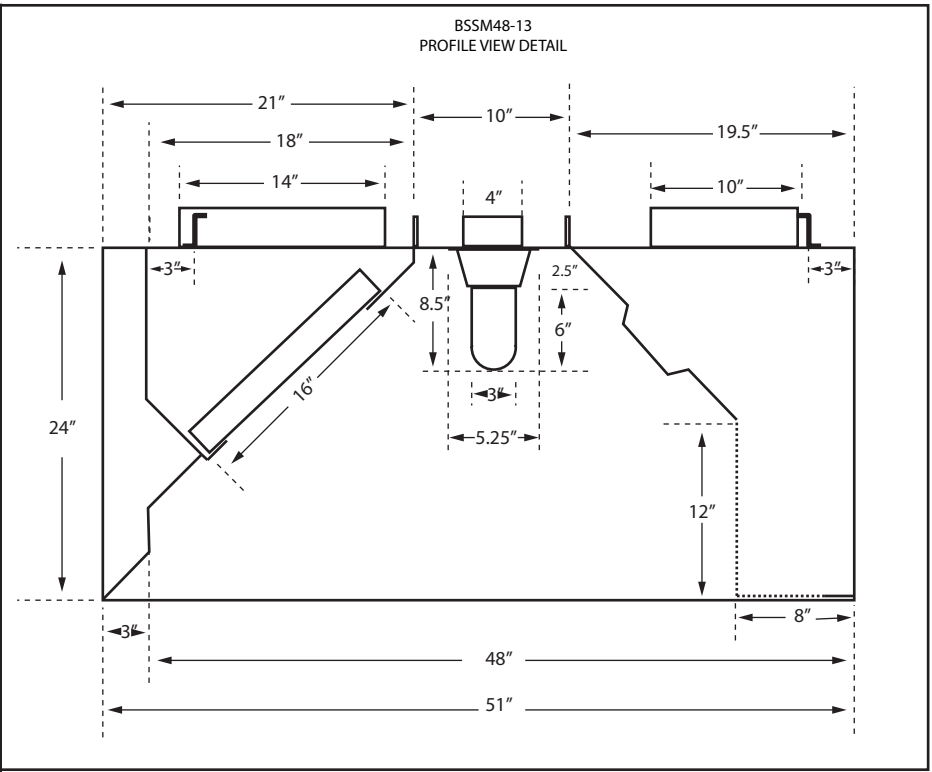
STAINLESS STEEL EXHAUST HOOD WITH MAKEUP AIR VENT
 ETL APPROVED. N.S.F. LISTED. CONFORMS TO NFPA 96
 ETL LISTED # 3148390 CONFORMS TO UL STD 710



PROFILE VIEW - TYPICAL HOOD SYSTEM INSTALLATION



INSTALL IN ACCORDANCE WITH NFPA 96 AS WELL AS ALL STATE & LOCAL CODES



HOOD INFORMATION (PER HOOD)											
MODEL	LENGTH	WIDTH	HEIGHT	HOOD CONSTRUCTION	FILTERS				LIGHTS		
					TYPE	QTY	HEIGHT	LENGTH	QTY	TYPE	
BSSM48-13-ETL	13'	48"	24"	TYPE: 430 STAINLESS STEEL GAUGE: 18 POLISH: #3	ALUMINUM BAFFLE w/HANDLES UL APPROVED	3	16"	20"	3	INCANDESCENT LIGHT FIXTURE UL APPROVED	
						4	16"	25"			
CFM REQUIREMENTS (PER HOOD)		OPTIONAL COLLARS (PER HOOD)									
EXHAUST	SUPPLY	EXHAUST	SUPPLY	STANDOFF	NOM WEIGHT	ACCESSORIES					
3,640 @ .75 S.P.	2,912 @ .12 S.P.	QTY	SIZE	QTY	SIZE	<input type="checkbox"/> NONE <input checked="" type="checkbox"/> 3" <input type="checkbox"/>	650 LBS				
		2	14" X 13"	2	16" X 10"						

SUPERIOR HOODS

2018 STEEL DRIVE TUCKER GA 30084
 TEL (770) 936 0770 FAX (770) 936 9914