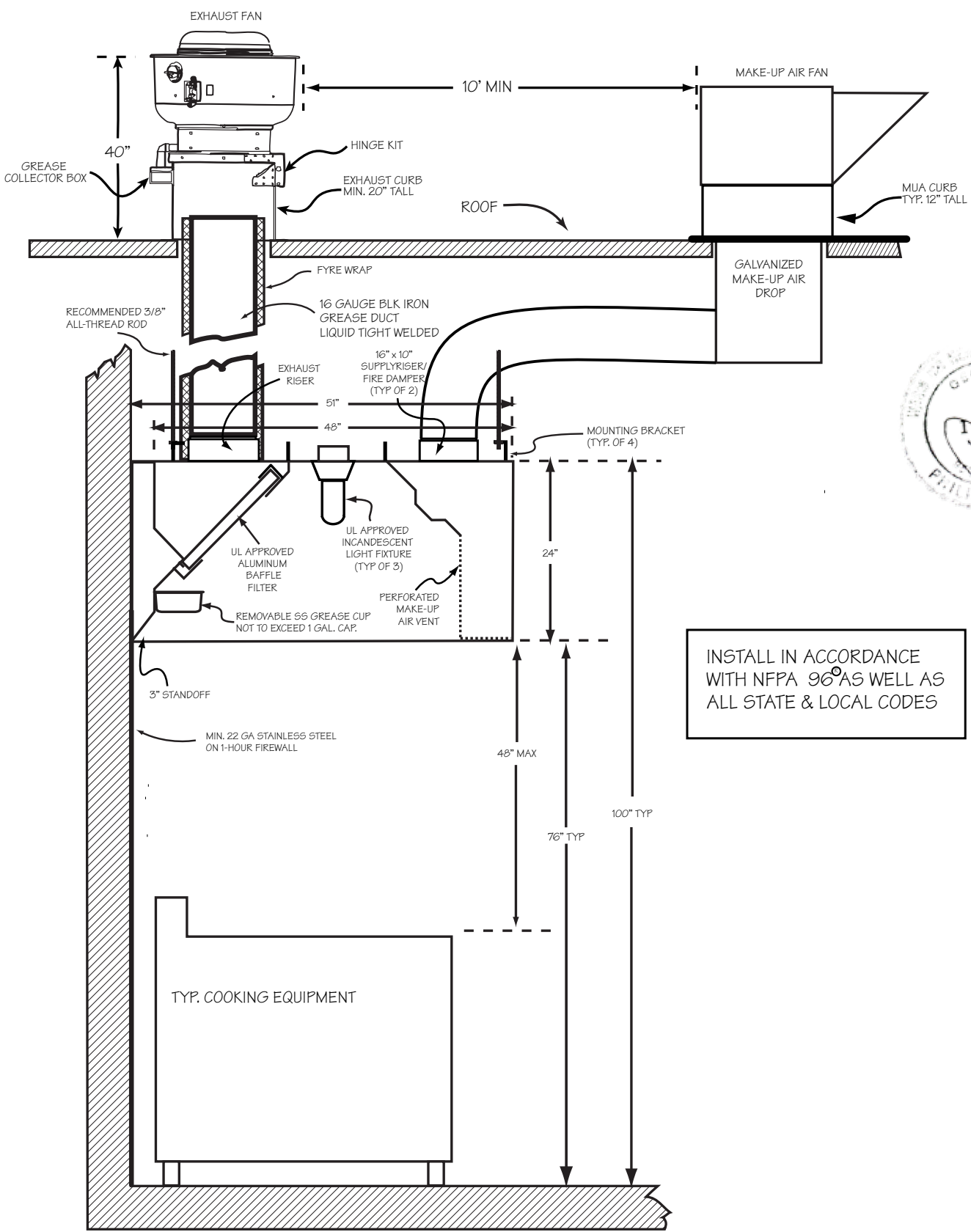


# BSSM 48-16 ETL

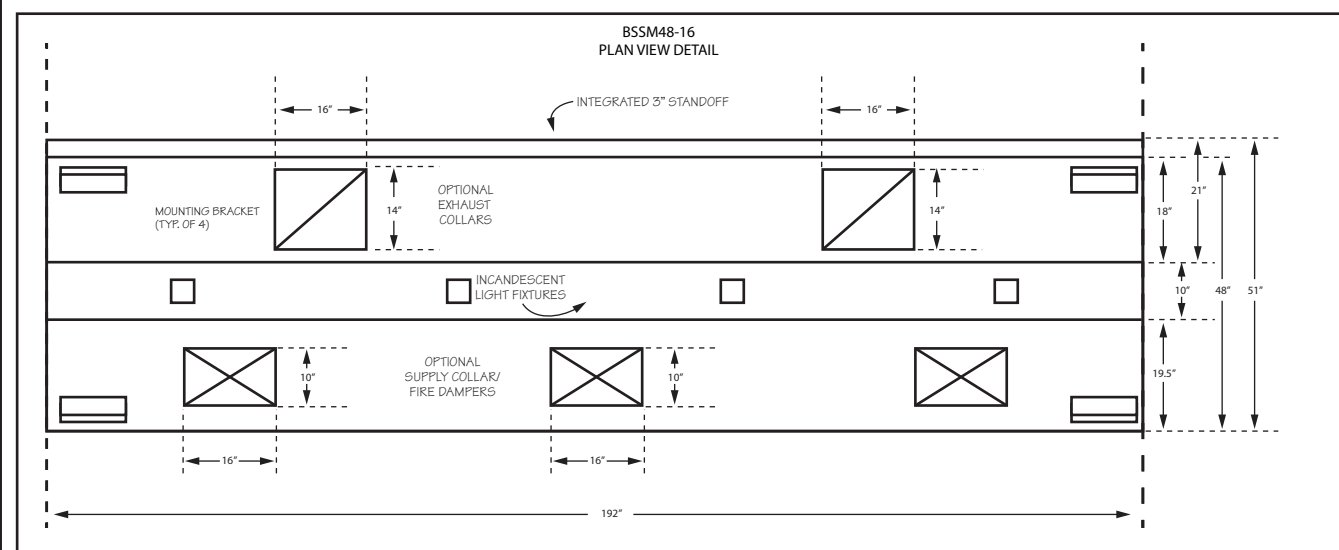
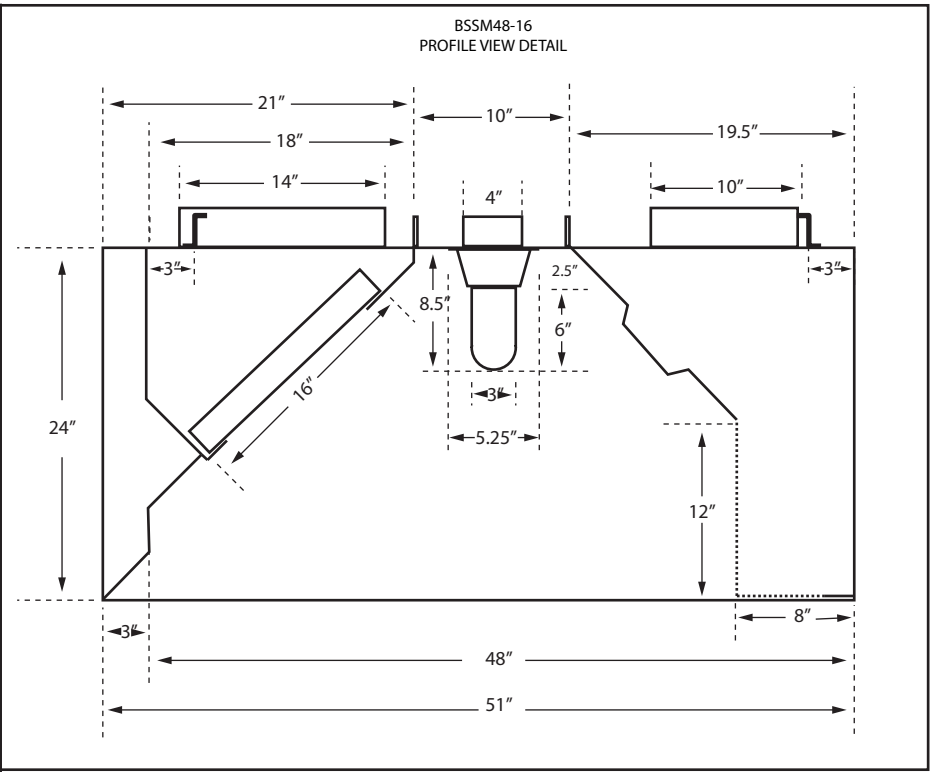
STAINLESS STEEL EXHAUST HOOD WITH MAKEUP AIR VENT  
 ETL APPROVED. N.S.F. LISTED. CONFORMS TO NFPA 96  
 ETL LISTED # 3148390 CONFORMS TO UL STD 710



PROFILE VIEW - TYPICAL HOOD SYSTEM INSTALLATION



INSTALL IN ACCORDANCE WITH NFPA 96 AS WELL AS ALL STATE & LOCAL CODES



HOOD INFORMATION (PER HOOD)										
MODEL	LENGTH	WIDTH	HEIGHT	HOOD CONSTRUCTION	FILTERS			LIGHTS		
					TYPE	QTY	HEIGHT	LENGTH	QTY	TYPE
BSSM48-16-ETL	16'	48"	24"	TYPE: 430 STAINLESS STEEL GAUGE: 18 POLISH: #3	ALUMINUM BAFFLE w/HANDLES UL APPROVED	1	16"	20"	4	INCANDESCENT LIGHT FIXTURE UL APPROVED
CFM REQUIREMENTS (PER HOOD)			OPTIONAL COLLARS (PER HOOD)							
EXHAUST	SUPPLY		EXHAUST	SUPPLY	STANDOFF	NOM WEIGHT		ACCESSORIES		
4,480 @ .75 S.P.	3,584 @ .12 S.P.		QTY	SIZE	QTY	SIZE	800 LBS			
			2	14" X 16"	3	16" X 10"	<input type="checkbox"/> NONE <input checked="" type="checkbox"/> 3" <input type="checkbox"/>			

**SUPERIOR HOODS**

2018 STEEL DRIVE TUCKER GA 30084  
 TEL (770) 936 0770 FAX (770) 936 9914