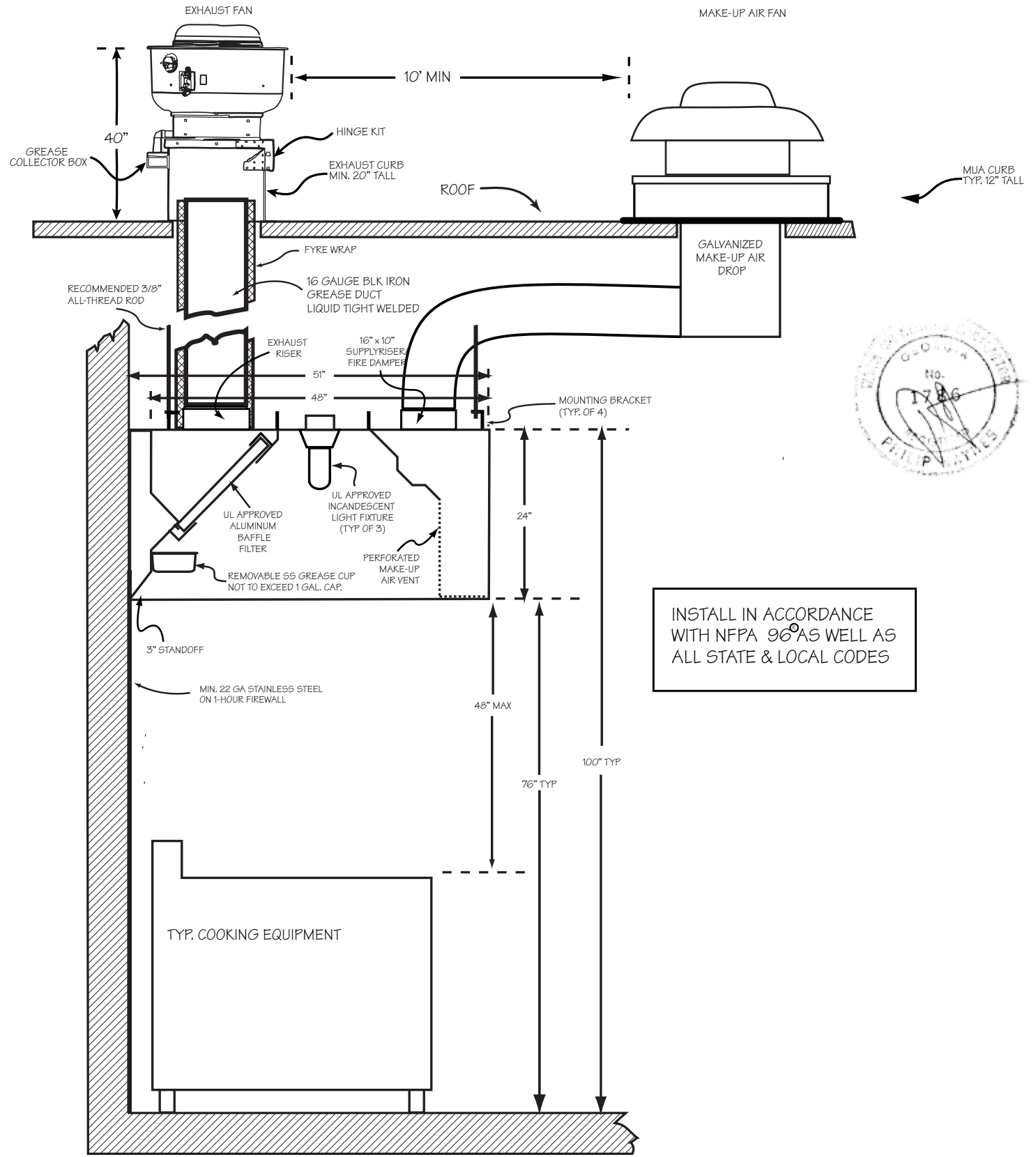


# BSSM 48-8 ETL

STAINLESS STEEL EXHAUST HOOD WITH MAKEUP AIR VENT  
 ETL APPROVED. N.S.F. LISTED. CONFORMS TO NFPA 96  
 ETL LISTED # 3148390 CONFORMS TO UL STD 710



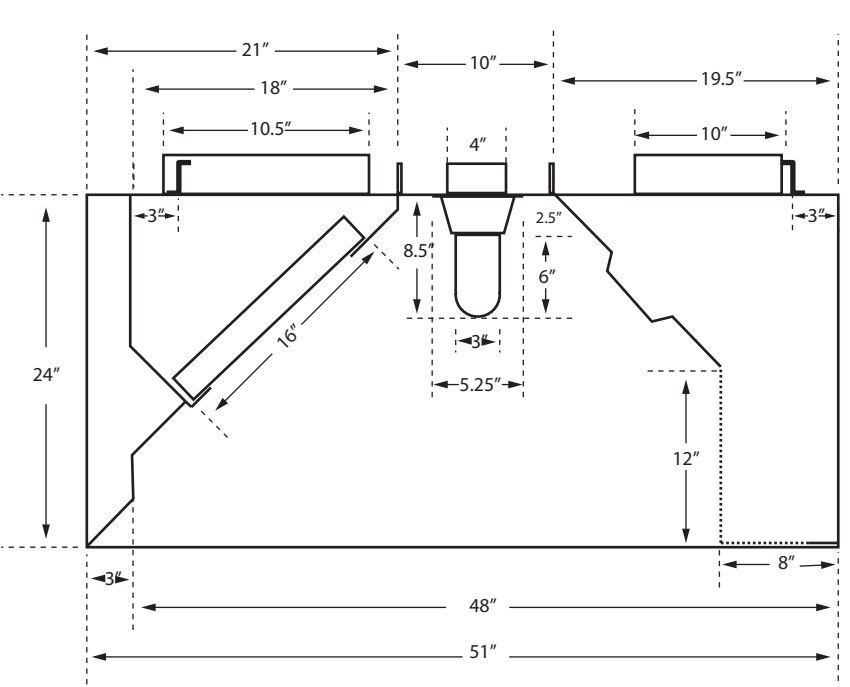
PROFILE VIEW - TYPICAL HOOD SYSTEM INSTALLATION



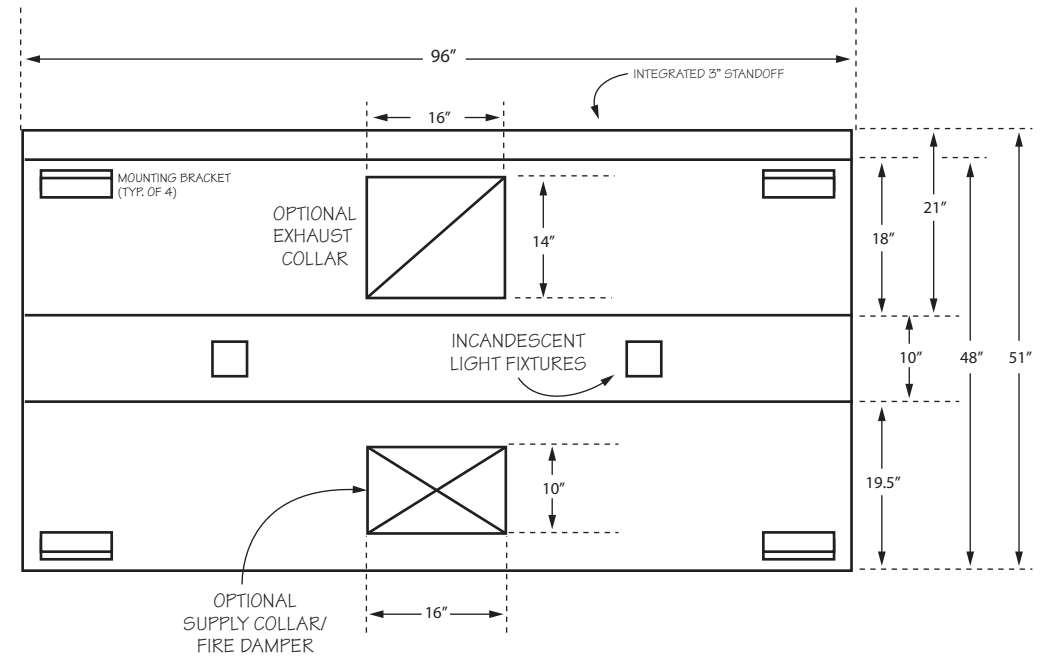
INSTALL IN ACCORDANCE WITH NFPA 96 AS WELL AS ALL STATE & LOCAL CODES



BSSM48-8 PROFILE VIEW DETAIL



BSSM48-8 PLAN VIEW DETAIL



HOOD INFORMATION (PER HOOD)

MODEL	LENGTH	WIDTH	HEIGHT	HOOD CONSTRUCTION	FILTERS			LIGHTS			
					TYPE	QTY	HEIGHT	LENGTH	QTY	TYPE	
BSSM48-8-ETL	8'	48"	24"	TYPE: 430 STAINLESS STEEL GAUGE: 18 POLISH: #3	ALUMINUM BAFFLE w/HANDLES UL APPROVED	1	16"	20"	2	INCANDESCENT LIGHT FIXTURE UL APPROVED	
						3	16"	25"			
CFM REQUIREMENTS (PER HOOD)		OPTIONAL COLLARS (PER HOOD)									
EXHAUST	SUPPLY	EXHAUST	SUPPLY	STANDOFF	NOM WEIGHT	ACCESSORIES					
2,240 @ .75 S.P.	1,792 @ .12 S.P.	QTY	SIZE	QTY	SIZE	<input type="checkbox"/> NONE <input checked="" type="checkbox"/> 3"	350 LBS				
		1	14" X 16"	1	16" X 10"						

**SUPERIOR HOODS**

2018 STEEL DRIVE TUCKER GA 30084  
 TEL (770) 936 0770 FAX (770) 936 9914