



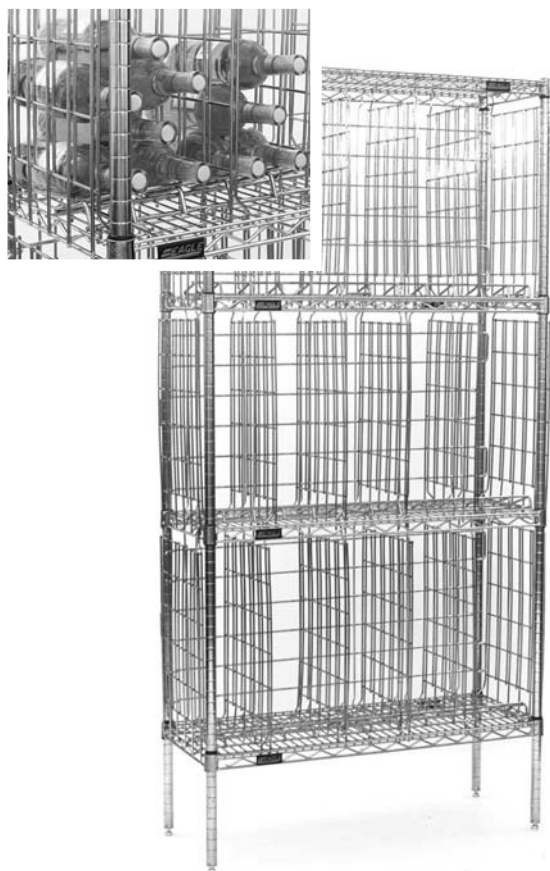
Profit from the Eagle Advantage®

Specification Sheet

Short Form Specifications

Eagle Bulk Wine Storage Unit, model _____. (Chrome plated / black powder coated mild steel) panels. Bottles are retained by removable dividers, back panels, and end panels. Capacity: 12 bottles per compartment. Compartments adjustable for bottle diameter.

Eagle Bulk Wine Storage Unit with Security Doors, model _____. (Chrome plated / black powder coated mild steel) panels and hinged security doors. Bottles are retained by removable dividers, back panels, and end panels. Capacity: 12 bottles per compartment. Compartments adjustable for bottle diameter.



bulk wine storage unit

EAGLE GROUP

100 Industrial Boulevard, Clayton, DE 19938-8903 USA

Phone: 302-653-3000 • Fax: 302-653-2065

www.eaglegrp.com

Foodservice Division: Phone 800-441-8440

MHC/Retail Display Divisions: Phone 800-637-5100

For custom configuration or fabrication needs, contact our **SpecFAB®** Division.

Phone: 302-653-3000 • Fax: 302-653-3091 • e-mail: specfab@eaglegrp.com

Item No.: _____
Project No.: _____
S.I.S. No.: _____

Bulk Wine Shelving and Display

MODELS:

- ☐ **BW1436C**
- ☐ **BW1448C**
- ☐ **BW1436BL**
- ☐ **BW1448BL**
- ☐ **BW1436C-SC**
- ☐ **BW1448C-SC**
- ☐ **BW1436BL-SC**
- ☐ **BW1448BL-SC**

Design and Construction Features

- Panels are chrome or black powder coated mild steel.
- Bottles are retained with removable dividers, back panels and end panels.
- Adjustable leveling feet accommodates uneven floors.
- Adjustable compartments for bottle diameter.
- Available with security doors.
- Holds one dozen bottles per compartment.
- Height is 74" (1880mm).
- 36" (914mm) unit capacity is 180 bottles (750ml).
- 48" (1219mm) unit capacity is 240 bottles (750ml).

Please note: Units are for stationary applications only.

Certifications / Approvals



Spec sheets available for viewing, printing or downloading from our online literature library at www.eaglegrp.com

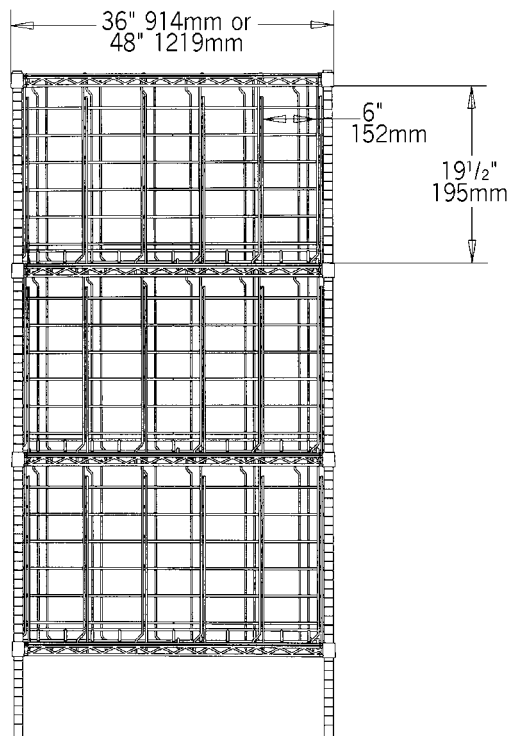
Eagle Foodservice Equipment, Eagle MHC, SpecFAB®, and Retail Display are divisions of Eagle Group. ©2009 by the Eagle Group



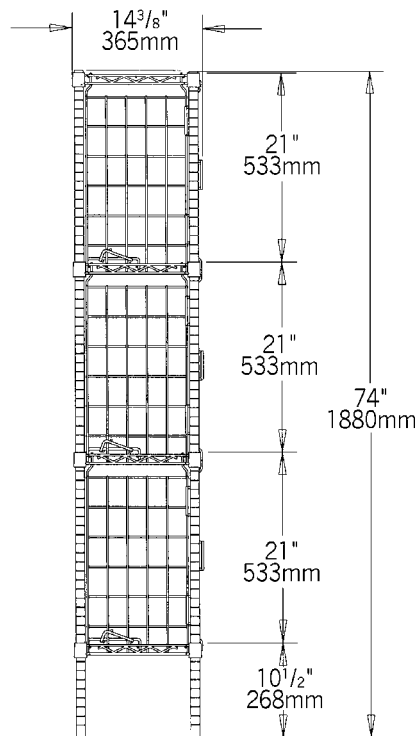
Profit from the Eagle Advantage®

Item No.: _____
 Project No.: _____
 S.I.S. No.: _____

Bulk Wine Shelving and Display



FRONT VIEW



SIDE VIEW

Bulk Wine Storage Units

chrome model #	black model #	width		x	length		weight		capacity (750ml bottles)
		in.	mm		in.	mm	lbs.	kg	
BW1436C	BW1436BL	14"	356		36"	914	140	63.5	180
BW1448C	BW1448BL	14"	356		48"	1219	160	72.5	240

Bulk Wine Storage Units with Security Doors

chrome model #	black model #	width		x	length		weight		capacity (750ml bottles)
		in.	mm		in.	mm	lbs.	kg	
BW1436C-SC	BW1436BL-SC	14"	356		36"	914	183	83.0	180
BW1448C-SC	BW1448BL-SC	14"	356		48"	1219	205	93.0	240

Because units are only 14" (356mm) wide, units are for stationary application only.
 Cradle wine shelves also available for wine display and storage. See specification sheet #EG01.20.

EAGLE GROUP

100 Industrial Boulevard, Clayton, DE 19938-8903 USA

Phone: 302-653-3000 • Fax: 302-653-2065

www.eaglegrp.com

Foodservice Division: Phone 800-441-8440

MHC/Retail Display Divisions: Phone 800-637-5100

Printed in U.S.A.
 ©2009 by Eagle Group

Rev. 05/09

Spec sheets available for viewing, printing or downloading from our online literature library at www.eaglegrp.com

Although every attempt has been made to ensure the accuracy of the information provided, we cannot be held responsible for typographical or printing errors. Information and specifications are subject to change without notice. Please confirm at time of order.