



BEVERAGE-AIR®

PROJECT: _____
 ITEM # _____ QTY: _____
 MODEL # _____
 AIA # _____ SIS # _____
 APPROVED: _____

BAR EQUIPMENT - BOTTLE COOLERS

Model: DW79HC-S-29

FROSTY BREW BOTTLE COOLER IN STAINLESS STEEL



7 YEAR WARRANTY
Parts, Labor, and Compressor

CABINET CONSTRUCTION

- Stainless steel exterior
- Galvanized steel interior and floor
- Full electronic control
- Tops include easy glide, stainless steel lids (3)
- Stainless steel countertop with integral glass stops
- Five (5) epoxy coated adjustable wire dividers
- Bottle opener and cap catcher standard
- Constructed with high cooling RPM fans to provide fast cooling



OPTIONS & ACCESSORIES

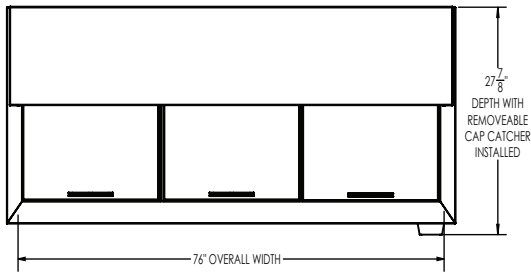
- Stainless steel interior
- Wire divider
- Lid locks
- 3" Casters or 6" adjustable leg with plate
- Remote option* (see note on back on page)

REFRIGERATION SYSTEM

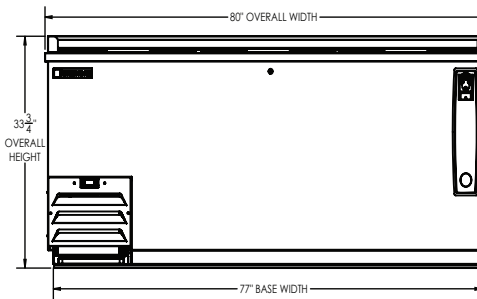
- Refrigeration system uses R290 refrigerant to comply with all environmental concerns
- Automatic, non-electric defrost
- Epoxy coated evaporator coil
- Forced air refrigeration system holds product between 30°-32°F



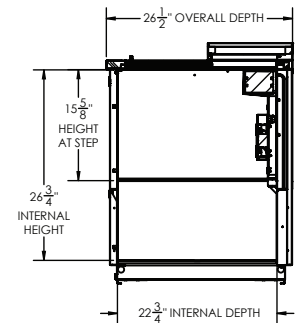
PLAN VIEW



ELEVATION VIEW



SIDE VIEW



EXTERNAL DIMENSIONAL DATA

Width Overall (in)	80"
Depth Overall (in)	26 1/2"
Depth with cap catcher (in)	27 7/8"
Height Overall (in)	33 3/4"
Number of Lids	3

INTERNAL DIMENSIONAL DATA

NET Capacity (cubic ft.)	24.1
Internal Width Overall (in)	76"
Internal Depth Overall (in)	22 3/4"
Internal Height Overall (in)	26 3/4"
Number of Dividers	5
12 oz. Bottle Capacity	32 Cases
12 oz. Can Capacity	45 3/4 Cases

*NOTE: Remote units are field wired and come with 6" legs.
Refrigerant must be specified at time of order.

We reserve the right to change specifications and product design without notice. Such revisions do not entitle the buyer to corresponding changes, improvements, additions or replacements for previously purchased equipment. Dimensional tolerances +/- 1/4". Metric dimensions (MM).

ELECTRICAL DATA

Full Load Amps	2.5
Voltage	115/60/1
Nema Plug (8' cord)	5-15P

REFRIGERATION DATA

Horsepower	1/4
Capacity (BTU/Hr)	1702
Heat Rejection (BTU/Hr)	2553
Charge (lbs/grams/ounces)	0.2314 / 105 / 3.71

SHIPPING DATA

Gross Weight - Crated	432 lbs.
Height - Crated (in)	41"
Width - Crated (in)	83"
Depth - Crated (in)	30"

ELECTRICAL CONNECTION



115/60/1
NEMA 5-15P

Unit pre-wired at factory and include 8' long cord and plug set.