



# BEVERAGE-AIR®

Project: \_\_\_\_\_  
Item: \_\_\_\_\_  
Location: \_\_\_\_\_  
Approved: \_\_\_\_\_

AIA#

SIS#

## UNDERCOUNTER REFRIGERATOR DRAWERS

UCRD72AHC Undercounter Refrigerator With Drawers  
Hydrocarbon Series

MODEL:  
UCRD72AHC-6



**7 Year Parts/Labor Warranty**  
**7 Year Compressor Warranty**

### CABINET CONSTRUCTION

- Stainless steel front, sides, top, drawers and grille (galvanized steel back & bottom)
- Interior liner is made of corrosion resistant aluminum
- Full electronic control
- Undercounter feature a 1/2" thick sub-top
- Interior thermometer is standard
- Snap-in drawer gaskets
- Upper and lower pull-out drawers accommodate 6" deep pans
- Stainless steel drawer frames supported on telescoping drawer slides
- Drawer slides include locking mechanism that prevents drawer from being inadvertently pulled off cabinet
- 6" Casters, (2) with brakes standard

### OPTIONS & ACCESSORIES

- Stainless steel back
- Stainless steel interior
- 3" Casters
- 6" Legs (stainless steel, black or seismic/flange)
- Low profile casters
- Roller kit
- Remote option\* (see note on back on page)

### REFRIGERATION SYSTEM

- Uses environmentally friendly, energy efficient R290 refrigerant, and meets all regulatory requirements for CARB, SNAP, DOE & more
- Adaptive defrost
- Epoxy coated evaporator coil
- Refrigerators capable of maintaining product temperature between 36°F and 38°F

UCRD72AHC UNDERCOUNTER REFRIGERATOR DRAWERS



  
Please verify qualifying units by visiting:  
[www.energystar.gov/cfs](http://www.energystar.gov/cfs)

3779 Champion Blvd., Winston-Salem, NC 27105  
1-888-845-9800 Fax: 1-336-245-6453  
Beverage-Air.com Sales@bevair.com

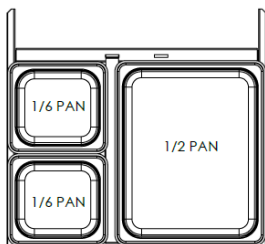


# BEVERAGE-AIR®

| MODEL                              | UCRD72AHC-6          |
|------------------------------------|----------------------|
| <b>EXTERNAL DIMENSIONAL DATA</b>   |                      |
| Width Overall                      | 72"                  |
| Depth Overall with Handle & Bumper | 32"                  |
| Height Overall with 6" Casters     | 34 5/8"              |
| Number of Drawers                  | 6                    |
| Depth with Drawer Extended         | 47 1/2"              |
| Drawer Openings                    | (6) 19 1/2" x 9 3/8" |
| <b>INTERNAL DIMENSIONAL DATA</b>   |                      |
| NET Capacity (cubic ft.)           | 17.1                 |
| Internal Width Overall (in)        | 68"                  |
| Internal Depth Overall (in)        | 15 3/8"              |
| Internal Height Overall (in)       | 23"                  |
| <b>ELECTRICAL DATA</b>             |                      |
| Full Load Amperes                  | 3.0                  |
| Voltage                            | 115/60/1             |
| Nema Plug (8' cord)                | 5-15P                |
| <b>REFRIGERATION DATA</b>          |                      |
| Horsepower                         | 1/5                  |
| Capacity (BTU/Hr)                  | 1350                 |
| Heat Rejection (TBU/Hr)            | 2025                 |
| Charge (lbs/grams/ounces)          | 0.2646 / 120 / 4.24  |
| <b>SHIPPING DATA</b>               |                      |
| Gross Weight - Crated              | 424 lbs              |
| Height - Crated                    | 34"                  |
| Width - Crated                     | 75"                  |
| Depth - Crated                     | 32"                  |

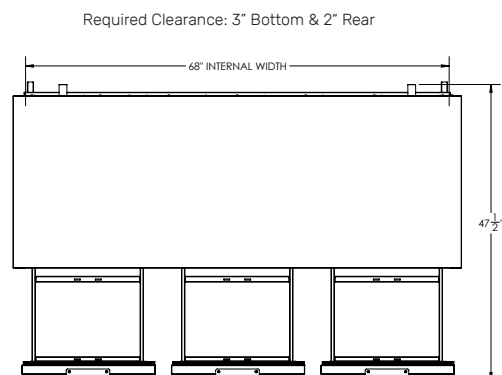
\*\*NOTE: Remote units are field wired and come with 6" legs.  
Refrigerant must be specified at time of order.

We reserve the right to change specifications and product design without notice. Such revisions do not entitle the buyer to corresponding changes, improvements, additions or replacements for previously purchased equipment. Dimensional tolerances +/- 1/4". Metric dimensions (MM).

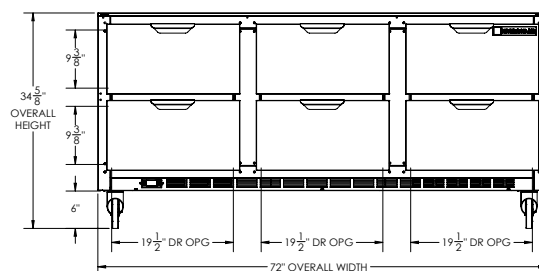


## Undercounter Refrigerator with Drawers Model: UCRD72AHC-6

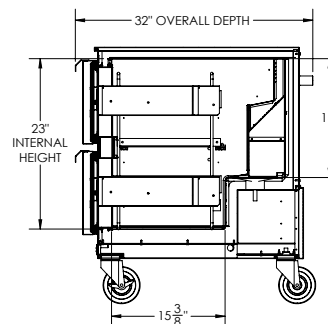
### Model Views



### PLAN VIEW



### ELEVATION VIEW



### SIDE VIEW

### ELECTRICAL CONNECTION



115/60/1  
NEMA 5-15P

Unit pre-wired at factory  
and include 8' long cord  
and plug set.



3779 Champion Blvd., Winston-Salem, NC 27105 1-888-845-9800 Fax: 1-336-245-6453 Beverage-Air.com Sales@bevair.com

