



# RELIABLE, DURABLE & INDUCTION CAPABLE



## INDUCTION ALUMINUM FRY PAN

THE ALUMINUM FRY PANS YOU TRUST, NOW WITH INDUCTION CAPABILITY. 



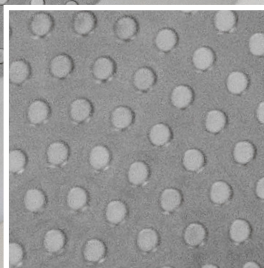
Reliable, durable and affordable, our **Thermalloy®** induction aluminum fry pans are:

- 18/0 Stainless steel base allows for induction capability
- Uniform thickness for superior heat distribution
- 3.5mm / 8 gauge
- Durable aluminum construction guarantees even heat distribution
- 18/0 Stainless Steel. Oven safe.
- Three offset rivet design, ensures less stress on rivets for increased durability
- Ergonomic removable silicone sleeve, heat resistant to 572°F/300°C, included
- Lustrous satin finish
- Eclipse non-stick finish on applicable models



Three Offset Rivets For Strong Handle Attachment.

Stainless Steel Induction Capable Base



Which pan suits your professional kitchen?

fry pan



brownefoodservice.com



**Induction Aluminum Fry Pan**

Natural Finish. Safe for use with all utensils.

ITEM #	DIM
5813847	7" / 18 cm
5813848	8" / 20 cm
5813850	10" / 25.4 cm
5813852	12" / 30.5 cm
5813854	14" / 35.6 cm



**Induction Aluminum Fry Pan**

Eclipse Non-Stick Finish. Not for use with metal utensils.



ITEM #	DIM
5813857	7" / 18 cm
5813858	8" / 20 cm
5813860	10" / 25.4 cm
5813862	12" / 30.5 cm
5813864	14" / 35.6 cm



Eclipse® 3-layer internally-reinforced non-stick coating delivers superior food release characteristics as well as scratch resistance and high durability. PFOA free.