



DYNASTY™

Walk-in Coolers and Freezers



Providing walk-in refrigeration with the industry's longest lasting and most energy efficient insulation!

INNOVATION AND EXCELLENCE SINCE 1985

DYNASTY WALK-IN STANDARD FEATURES

Listening to our customers is what we do best. They have inspired us, our engineering and manufacturing teams to design, refine and build walk-ins that meet their highest expectations, while delivering them in a competitive timeframe. Our panel raw materials and hardware components are of the finest quality in the industry. We can build a walk-in refrigeration system that meets the most demanding customer requirements, and provide piece-of-mind that your investment will last a lifetime.

PANELS AND INSULATION

PANEL CONSTRUCTION



Modular Panel Construction

Dynasty modular wall, floor and ceiling panels are fabricated in our plant using state-of-the-art robotic manufacturing and assembly processes; for precise fit, easy assembly and long life. Dynasty panels are 4" thick and manufactured with 100% uniform AK-XPS4 rigid foam. That insulation is permanently bonded to primed metal surfaces, to form a non-deteriorating structurally-rigid panel.

Dynasty panel assembly is accomplished with a time-tested, corrosion resistant cam action locking system, and a factory installed NSF compliant compression gasket, to form rigid, airtight joints.



Airtight Joints

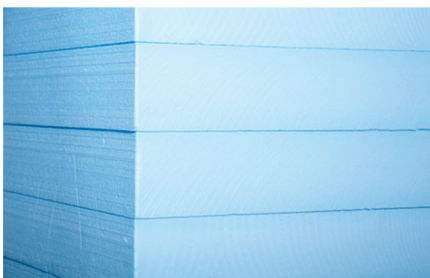
STANDARD PANEL FINISH



Acrylume® Stucco Embossed Finish

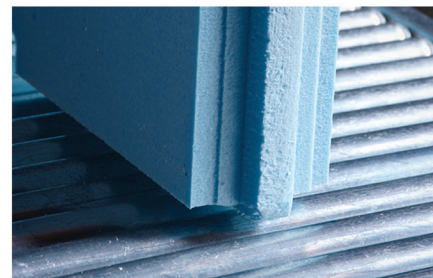
Dynasty wall and ceiling panel interiors and exteriors are laminated with 26-gauge zinc-aluminum (Acrylume®) coated steel, which is stucco embossed and coated with corrosion resistant acrylic paint.

INSULATION PERFORMANCE CHARACTERISTICS

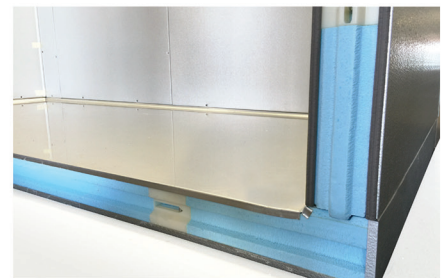


Long-Life Extruded Polystyrene Foam

AK-XPS4 rigid foam is a closed cell, void-free hydrophobic (water-resistant) material that maintains the highest possible R-value over time, to ensure long term energy efficiency. AK-XPS4 meets and exceeds the EISA Energy Independence & Security Act of 2007 with R-29 value for Coolers and R-32 value for Freezers. Our AK-XPS4 insulation is backed by The Dow Chemical Company with a 50 year thermal warranty.



STANDARD FLOOR



Strong Floor Construction

Dynasty floor panels are also 4" thick and manufactured using heavy gauge smooth aluminum, rated to support 600 pounds per-square-foot of uniformly distributed floor load. They include a 1/2"-radius cove along the interior perimeter, to make cleaning easier. Floorless walk-ins are provided with NSF approved floor screeds, to sit flat on an existing leveled floor.

MORE DYNASTY WALK-IN STANDARD FEATURES

The Dynasty walk-in standard height is 7'-7" with floor; or 7'-2 1/4" without a floor. Custom panels are available in 1" increments to meet customer space and floorplan requirements. The AmeriKooler and Bohn refrigeration system lineup includes: Indoor and Outdoor Remote and Self-contained packages, as well as a variety of energy monitoring control systems. All are backed by reliable service support from Heatcraft Refrigeration Products.

STANDARD DOOR CONSTRUCTION

FLUSH DOOR HARDWARE



Spring Assisted Hinges



Door Closer



Keyed Locking Door Handle

Standard door sizes are: 36", 30" or 26" wide, all with a 76" high clear opening. Doors are constructed with 4" thick AK-XPS4 rigid foam insulation and finished with 26-gauge zinc-aluminum (Acrylume®) coated steel, which is stucco embossed and coated with corrosion resistant acrylic paint.

Each door includes: two heavy duty, super cam-rise spring-assisted hinges; a heavy pull handle with key lock and inside safety release; and a door closer is provided for extra positive smooth closing. To ensure a positive seal, the door includes a three sided magnetic gasket and a flexible double wiper at the bottom edge of the door.

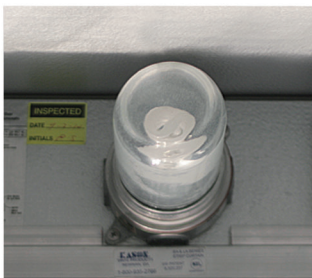
INSTALLATION KIT



Fast & Easy Assembly

We designed our panels so that job-site installation is fast and easy. All walk-ins are shipped with a hardware and installation instruction kit that includes: the shop drawing, detailed installation instructions, hex wrench for cam-lock panel assembly, PVC press fit caps and the light globe.

DOOR JAMB



Vapor Proof Light



Digital LED Thermometer & Switch



Heated Pressure-Relief Vent

The door jamb and door are constructed with a non-conductive heavy-duty PVC extrusion that provides a thermal barrier. The jamb includes an incandescent vapor-proof light fixture mounted on the center/top of the jamb, which provides extra space for shelving posts. A digital LED Thermometer (F°/C°) is provided, with On/Off pilot light switch.

Dynasty Freezer doors are equipped with a heated pressure relief vent mounted on the door jamb. In addition, the doors include a temperature controlled heater wire to ensure a positive frost free seal.

POPULAR DYNASTY WALK-IN OPTIONS



3RD SPRING ASSISTED DOOR HINGE



LED LIGHTS
(mounted on the jamb or loose)



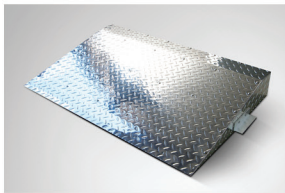
STRIP CURTAIN



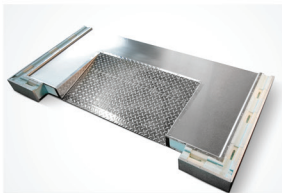
LOCKING BAR



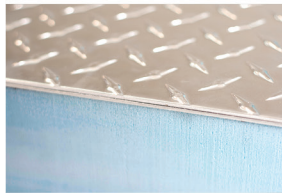
DIAMOND KICK PLATE
(interior and/or exterior)



EXTERIOR RAMP



INTERIOR RAMP



STAINLESS STEEL AND
REINFORCED FLOORS



INSULATED VIEWING WINDOWS
(12"x12" / 12"x24")



DIGITAL AUDIO/VISUAL ALARM

Many other optional features are available upon request. Please call us for details and pricing.

DYNASTY WARRANTY PROTECTION

50
YEAR

50 Year Thermal Warranty on Insulation
by The Dow Chemical Company

15
YEAR

15 Year Original Panel Warranty
on Walls and Ceilings

5
YEAR

5 Year Original Panel Warranty
on Doors and Floors

1
YEAR

1 Year Original Parts Warranty

For complete warranty terms please visit: www.amerikooler.com/support

CODE APPROVALS AND INDUSTRY LISTINGS



National Sanitation
Foundation



Underwriters
Laboratory



City of Houston



City of New York-MEA



State of Oregon



EISA Compliant

INSULATION TEST STANDARDS

WATER ABSORPTION
per ASTM C272

WATER PERFORMANCE
per ASTM E96

WATER AFFINITY
Hydrophobic

COMPRESSIVE STRENGTH
per ASTM D1621

FLAME SPREAD 15, SMOKE DENSITY 165
per ASTM-E84

SELF IGNITION, TEMP 896°F
per ASTM-D1929

FLASH IGNITION, TEMP 734°F
per ASTM-D1929