



# CSFPTP Pass-Thru

## Coolscapes™ Pass-Thru Freezer

Project \_\_\_\_\_

Item \_\_\_\_\_

Quantity \_\_\_\_\_

CSI Section 11400

Approved \_\_\_\_\_

Date \_\_\_\_\_

CSFPTP Pass-Thru Freezer

### Models

CSFPT1P-S

CSFPT2P-S

CSFPT1P-SH

CSFPT2P-SH



CSFPT1P-SH

### Standard Features

- GreenGenius™ R290 top mount refrigeration system featuring TXV expansion valve and hot gas condensate removal
- Digital exterior temperature display with high/low temp visual alarms
- Energy saving LED interior light
- Removable side louver
- Accommodates full size sheet pans
- Raised ABS interior door liner
- Smart door hinge that auto closes up to 90° and stays open past 90°
- Patented, lifetime warranty integral door handle
- Energy efficient door gasket – removable without tools
- Door locks
- 5" locking casters shipped loose for field installation
- 10' cord and plug attached
- Stainless steel exterior front, sides & interior
- Field rehingable doors - full height doors only
- Stainless steel pilaster with shelf clips
- 3 shelves per section
  - Chrome standard
- 115V / 60C / 1 P Standard

### Options

- 6" Stainless steel feet
- 6" Casters (all locking)
- 6" Stainless Steel flanged feet
- Additional chrome shelves
- Stainless steel shelves
- S/S finish door liner
- Tray/Pan Slides – various
- Utility base
- Kick plate
- Laminate – front, ends, shroud
- Heat shield end – max temp 400 degrees
- Trim strips
- Foot Pedal Door Opener

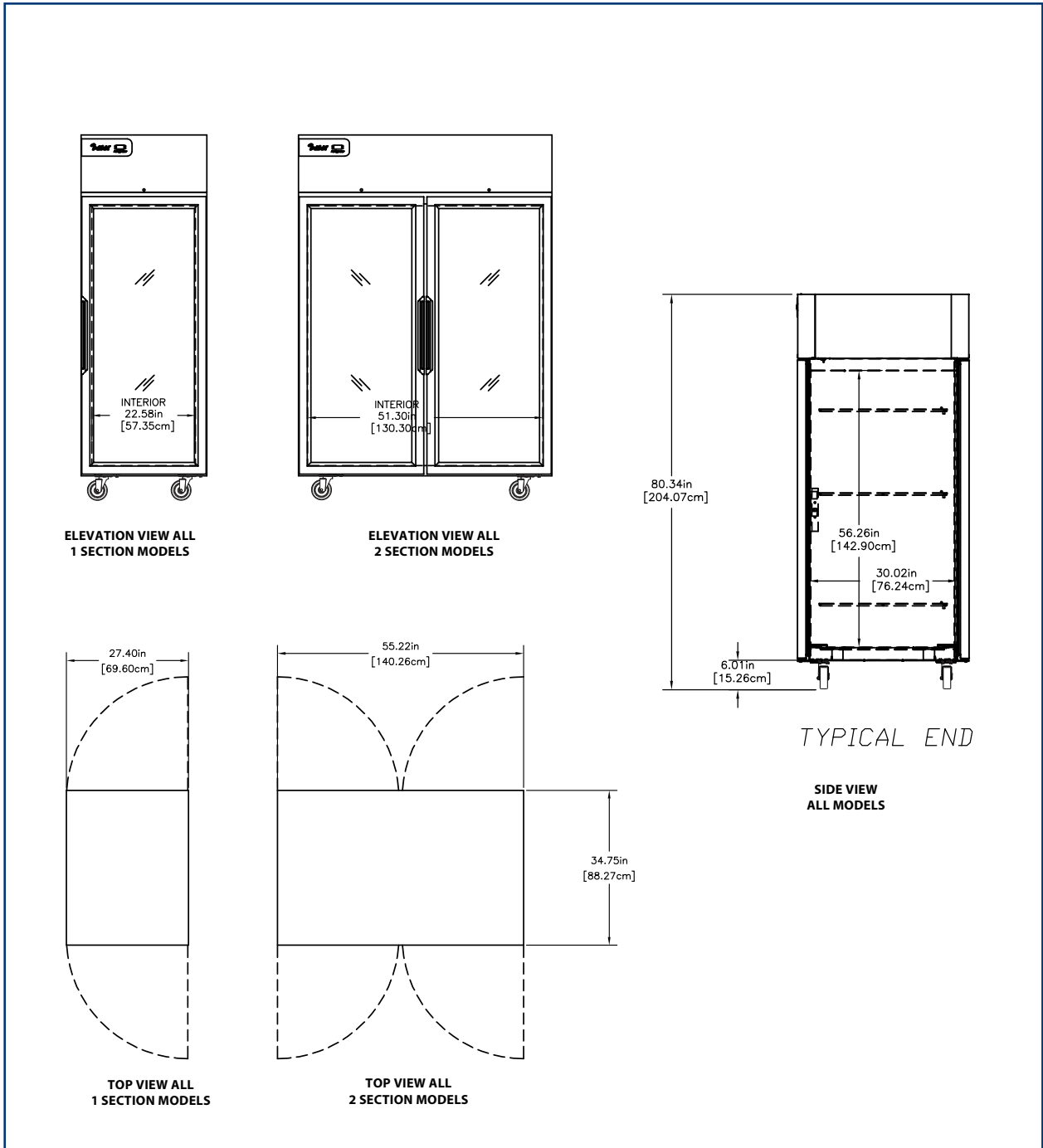
### Specifications

**Refrigeration system:** All components are mounted to the top cabinet ceiling, outside the food zone and are assembled as one piece and can be removed as one piece. Environmentally friendly R290 refrigerant is used. System has the capability of maintaining between -5°F and 0°F in heavy use food service operations. Refrigerant is metered using a highly responsive thermostatic expansion valve. System is controlled using an electronic temperature control, which provides improved pull down times, reducing compressor cycling and longer compressor life with lower energy consumption. Control system uses adaptive defrost to assure evaporator coil is free of ice and operating at optimum efficiency. Evaporator condensate is eliminated using an energy efficient hot gas system.

Units are completely insulated with high density foamed in place environmentally friendly, Kyoto Protocol Compliant, Non ODP (Ozone Depletion Potential), Non GWP (Global Warming Potential) polyurethane.



**CSFPTP Pass-Thru**  
 Coolscapes™ Pass-Thru Freezer



Specifications									
Model	V/Hz/Ph	Amps	Volume Cu. Ft.	SHELF CAPACITY SQ. FT.	No. of Shelves	Unit H.P.	Btu/Hr System Cap	Ship Weight	Nema Plug
CSFPT1P-S CSFPT1P-SH	115/60/1	7.2	23	12.12	3	0.55	1968		5-15P
CSFPT2P-S CSFPT2P-SH	115/60/1	10	50	26.5	6	(2X)0.55	3936		5-15P

Delfield reserves the right to make changes to the design or specifications without prior notice.

980 S. Isabella Rd.  
Mt. Pleasant, Michigan 48858

Phone: 800-733-8948 or 989-773-7981  
Fax: 800-669-0619  
www.delfield.com

Printed in the U.S.A.  
6248\_DEL\_CSFPTP-S  
03/17

