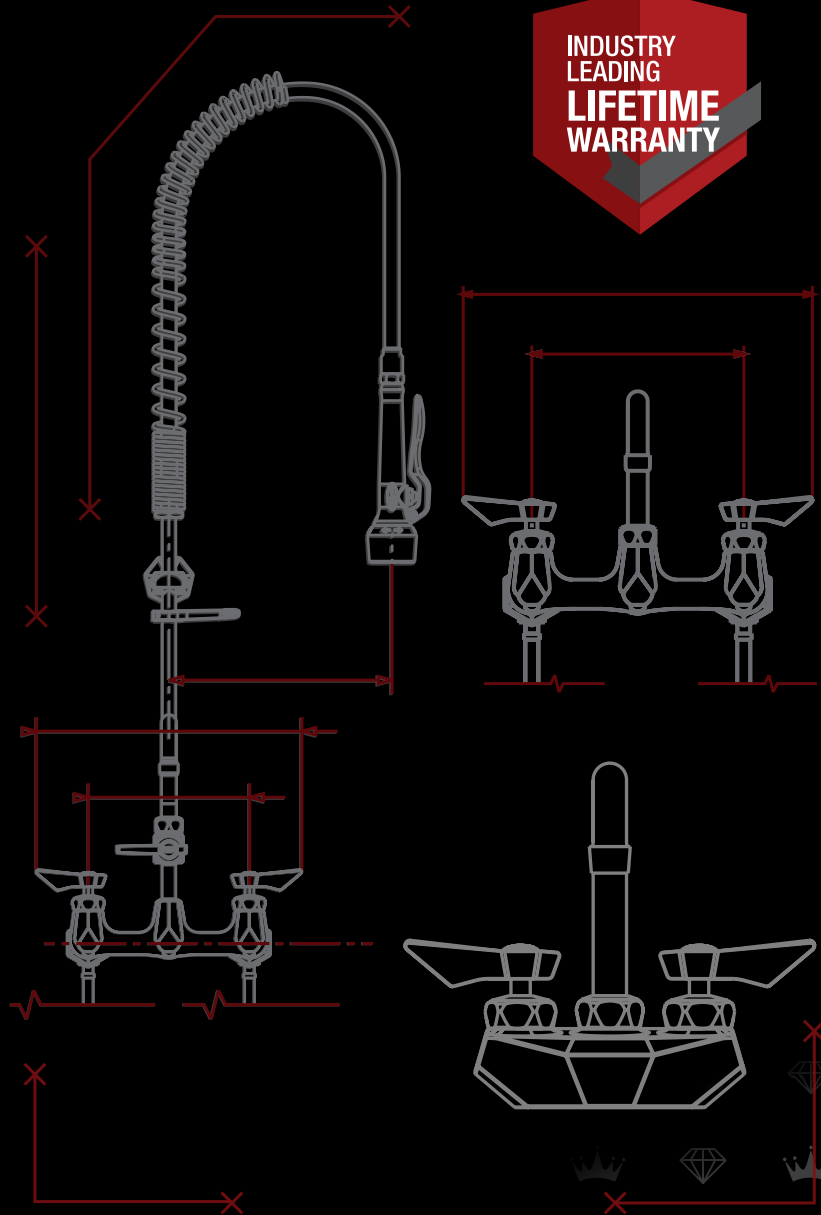


AESTHETICALLY DESIGNED X PERFORMANCE DRIVEN™

DIAMOND™

series



INDUSTRY
LEADING
LIFETIME
WARRANTY



DIAMONDTM series

AESTHETICALLY DESIGNED X PERFORMANCE DRIVENTM



1/4 Turn High Performance Stainless Steel Ceramic Cartridge Valves with Integral Check

Rigorously engineered and tested to execute over 2 million turns at optimal performance.



Sleek Aesthetic with Ultra-polish Satin Finish

Sharp contrasting lines blended with a bright satin finish create a modern captivating appeal.

INDUSTRY
LEADING
**LIFETIME
WARRANTY**

Industry Leading Lifetime Warranty

Cutting-edge engineering and world-class components allow us to offer an industry first lifetime warranty on all Diamond Series products.

Integral Smooth-Spin Swivel

Prevents tension buildup on hose

DUAL SPRAY TECHNOLOGY

Variable spray pattern
for all applications



Mounting Kit & Flexible Water Lines

High quality install kits packaged with all Diamond Series faucets and pre-rinses for simple installation.



Diamond Series Pre-Rinse Units

Stainless Steel Hyperflex Reinforced Hose

Extends lifespan

Dura-Spring

Increased coils reduces stress on hose

Wall Bracket

Fully adjustable

Integral Smooth-Spin Swivel

Prevents tension buildup on hose

Variable Spray Pattern

Rotate spray head for different spray style

Ultra-Polish Satin Finish

DUAL SPRAY
TECHNOLOGY



Knife Pattern

Condensed spray for tough grime

Cyclone Pattern

Shower spray for large surface area rinsing

Diamond Series Pre-Rinse Units

8" Center Wall Mount Pre-Rinse



DUAL SPRAY
TECHNOLOGY

- Dual Spray Technology
- Ultra-polish satin finish
- 1/4 Turn high performance stainless steel ceramic cartridge valves with integral check
- 1/2" NPT female inlets on 8" centers
- 1.15 GPM spray head
- 35" high with 15" overhang
- Mounting kit & flexible water lines included
- Includes wall bracket
- Pre-assembled to cut installation time
- Solid brass base

Model
DX-108

8" Center Wall Mount Pre-Rinse with Add-On Faucet (12" Spout)



DUAL SPRAY
TECHNOLOGY

- Dual Spray Technology
- Ultra-polish satin finish
- 1/4 Turn high performance stainless steel ceramic cartridge valves with integral check
- 1/2" NPT female inlets on 8" centers
- 1.15 GPM spray head
- 38" high with 15" overhang
- Mounting kit & flexible water lines included
- Includes wall bracket
- Pre-assembled to cut installation time
- Solid brass base

Model
DX-109

Single Hole Deck Mount Pre-Rinse

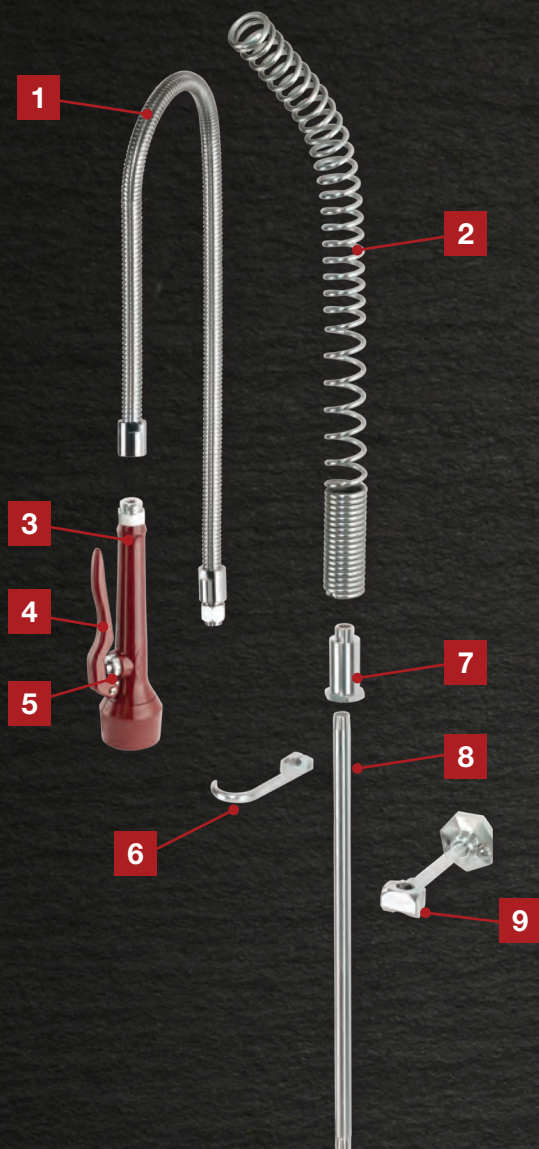


DUAL SPRAY
TECHNOLOGY

- Dual Spray Technology
- Ultra-polish satin finish
- 1/4 Turn high performance stainless steel ceramic cartridge valves with integral check
- 1-1/8" OD X 2-1/4" shank; fits in 1-1/4" hole
- 20" water lines with 3/8" compression fittings
- 1.15 GPM spray head
- 35" high with 15" overhang
- Includes wall bracket
- Pre-assembled to cut installation time
- Solid brass base

Model
DX-202

Diamond Series Pre-Rinse Replacement Parts



No.	Model	Description
1	DX-133	44" Hose
2	DX-162	Spring
3	DX-129	1.15 GPM Spray Head
4	DX-171	Spray Head Handle with screws
5	DX-322	Button Valve
6	DX-165	Hook
7	DX-161	Spring Retainer
8	DX-160	18" Riser Pipe
8	DX-160-24	24" Riser Pipe
9	DX-137	Wall Bracket
	DX-166	Repair Kit for Spray Head (Shower Pattern)
	DX-179	Repair Kit for Spray Head (Knife Pattern)

1.15 GPM Spray Head

- Dual Spray technology featuring two spray patterns
- Knife Pattern, condensed spray for tough grime
- Cyclone Pattern, shower spray for large surface area rinsing
- 360° smooth-swivel functionality
- Ergonomic handle
- Durable valve for extended longevity



Model
DX-129

DUAL SPRAY
TECHNOLOGY

Add-On Faucets

- 3/8" NPT Male inlet
- 3/8" NPT Female outlet
- Turns on and off without obstruction



Model	Spout Size
DX-138	6" Swing Spout
DX-149	8" Swing Spout
DX-139	12" Swing Spout
DX-140	14" Swing Spout
DX-141	16" Swing Spout
DX-1XX	Base Only (No Spout)

8" Center Pre-Rinse Base



Model
DX-208

Single Hole Pre-Rinse Base



Model
DX-201

Diamond Series Faucets

4" Center Wall Mount Faucets

- Ultra-polish satin finish
- 1/4 turn high performance stainless steel ceramic cartridge valves w/ integral check
- 1/2" NPS male inlets on 4" centers
- 1.8 GPM aerator installed
- Durable full range swing spout with double o-ring construction
- Lever handles
- Mounting kit & flexible water lines included
- Solid brass base

Model	Spout Size
DX-406	6" Swing
DX-408	8" Swing
DX-410	10" Swing
DX-400	4-1/2" Double Bend
DX-401	6" Wide Double Bend
DX-402	8-1/2" Wide Double Bend
DX-4XX	Faucet Body (No Spout)



4" Center Deck Mount Faucets

- Ultra-polish satin finish
- 1/4 turn high performance stainless steel ceramic cartridge valves with integral check
- 1/2" NPS male inlets on 4" centers
- 1.8 GPM aerator installed
- Durable full range swing spout with double o-ring construction
- Lever handles
- Mounting kit & flexible water lines included
- Solid brass base

Model	Spout Size
DX-306	6" Swing
DX-308	8" Swing
DX-310	10" Swing
DX-312	12" Swing
DX-314	14" Swing
DX-316	16" Swing
DX-301	6" Wide Double Bend
DX-302	8-1/2" Wide Double Bend
DX-325	4-1/2" Wide Double Bend
DX-3XX	Faucet Body (No Spout)



8" Center Wall Mount Faucets

- Ultra-polish satin finish
- 1/4 turn high performance stainless steel ceramic cartridge valves with integral check
- 1/2" NPT female inlets on 8" centers
- 1.8 GPM aerator installed
- Durable full range swing spout with double o-ring construction
- Lever handles
- Mounting kit & flexible water lines included
- Solid brass base

Model	Spout Size
DX-806	6" Swing
DX-808	8" Swing
DX-810	10" Swing
DX-812	12" Swing
DX-814	14" Swing
DX-816	16" Swing
DX-818	18" Jointed
DX-801	6" Wide Double Bend
DX-802	8-1/2" Wide Double Bend
DX-8XX	Faucet Body (No Spout)

Diamond Series Replacement Parts

Swing Spouts

- Built for high volume
- Double o-ring construction
- Polished chrome finish



Model	Spout Size
DX-420	6" Swing Spout
DX-421	8" Swing Spout
DX-422	10" Swing Spout
DX-423	12" Swing Spout
DX-424	14" Swing Spout
DX-425	16" Swing Spout
DX-426	18" Jointed Spout

Double Bend Gooseneck Spouts

- Built for high volume
- Double o-ring construction
- Polished chrome finish



Model	Spout Size
DX-430	4-1/2" Double Bend Gooseneck
DX-431	6" Double Bend Gooseneck
DX-432	8-1/2" Double Bend Gooseneck

1/4 Turn High Performance Ceramic Cartridge Valves

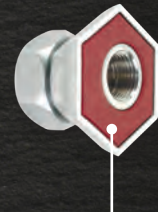
- Fits all Diamond Series Faucets
- Integral check valve
- Stainless Steel construction
- Fully assembled, easy to install



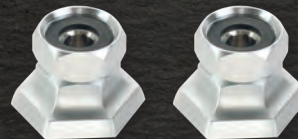
Model	Description
DX-708	Cold Valve
DX-709	Hot Valve

Coupling Flanges

- Fits all Diamond Series faucets
- Flange seal technology
- Eccentric fittings
- Includes nipples
- 1/2" NPT female inlet
- 1/4" adjustment per flange
- Two rubber washers



Flange Seal Technology



Model	Description
DX-100	2 pcs.

Diamond Series Complete Mounting Kit

- (2) 3/8" Stainless Steel Braided Flexible Supply Hoses
- Includes 1/2" NPT Close Elbows w/ Swivel Compression fittings on faucet side & 3/8" Compression fittings on water supply side
- (2) 1/2" NPT Nipples, (2) washers & (2) lock nuts
- No soldering or teflon tape required



Model
21-445L



DIAMONDTM
series

AESTHETICALLY DESIGNED X PERFORMANCE DRIVENTM



Krowne Metal Corporation
100 Haul Road
Wayne, NJ 07470

ORDERS


orders@krowne.com


QUESTIONS


customerservice@krowne.com


SALES


sales@krowne.com

 [@krownemetal](https://www.instagram.com/krownemetal)

 [@krownemetal](https://www.facebook.com/krownemetal)

 [facebook.com/krownemetal](https://www.facebook.com/krownemetal)

 sales@krowne.com

 800.631.0442

 krowne.com