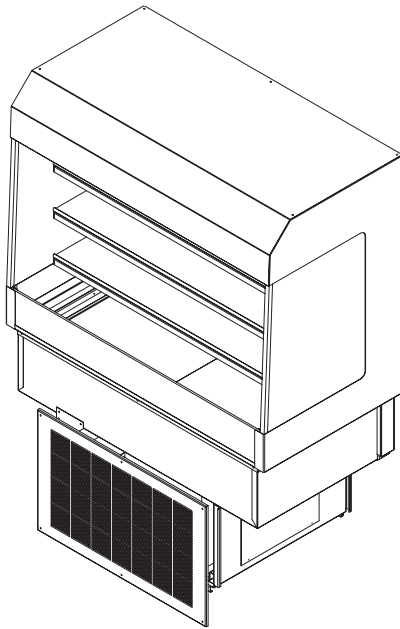




ASM-P Drop-In Air Screen Merchandiser

Models

- ASM-36P 36.25" length drop-in air screen merchandiser
- ASM-48P 48.25" length drop-in air screen merchandiser



ASM-48P

Standard Features

- Slim line fluorescent lighting showcases product
- Bottom shelf is a recessed pan, perfect for bottles
- Three 1" adjustable glass shelves with warm white LED lights standard
- Shelves can be positioned three ways: completely flat, slanted, and full tilt
- Slide out condensing unit allows for easy serviceability
- R290 refrigerant
- Drain requires hard plumbing
- Sliding doors makes replenishment and loading easy
- Display section front locking security night cover and rear door lock
- Meets NSF7 type 2 requirements which maintains temperature in 80°F environment with 55% relative humidity
- Standard with two louvers, shipped loose, for proper airflow in base
- One year parts and labor standard warranty

Options & Accessories

- Remote refrigeration
- Laminated sides and front

Specifications

Interior and Exterior: Display section exterior sides are made of 18-gauge 1" stainless steel sides with 7/8" dual pane LOW-E argon filled insulated glass. Insulated sliding rear glass doors give operator access to the display case. Doors feature plexiglas ducts that direct air flow. The display section is supplied with a locking security night cover. The interior bottom shelf has a recessed pan, constructed with stainless steel. Recessed pan is insulated with high density foamed-in-place environmentally friendly, Kyoto Protocol Compliant, Non ODP (Ozone Depletion Potential), Non GWP (Global Warming Potential) polyurethane. Three 1/4" tempered glass shelves have three angle adjustments and are adjustable in 1" vertical increments. Stainless steel frames support the shelves. Four LED lights are standard, with an on/off switch located in the control box. Two louvers are provided with the unit to provide proper air flow. Base cutouts to accommodate the louvers need to measure 17" x 28" (43cm x 71cm).

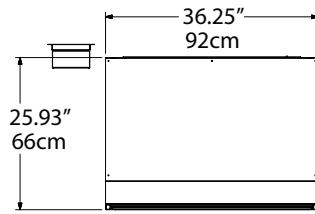
Refrigeration system: consists of a full length base mounted evaporator coil with multiple fans circulating the air throughout the cabinet utilizing a thermostatic control. Refrigeration lines are piped to a single point connection with expansion valve. A sloped drain pan is placed below the coil with a 1 1/4" NPT connector. Units need to be plumbed directly to a drain or have an electric condensate evaporator (optional). Refrigeration system shall use R290 refrigerant. Compressor and condenser coil shall be mounted below the display cabinet. Display section to maintain 36°F (2°C) to 40°F (4°C) degree temperatures at 80°F (28°C) degree ambient room temperature, 55% humidity.

Electrical: Units are supplied with a 9', 14-20P cord and plug.

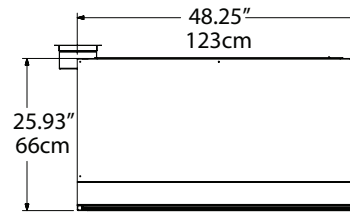


R290

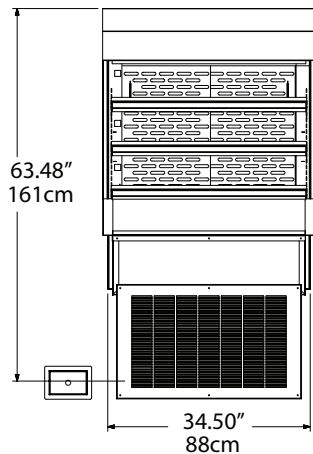
ASM-P Drop-In Air Screen Merchandiser



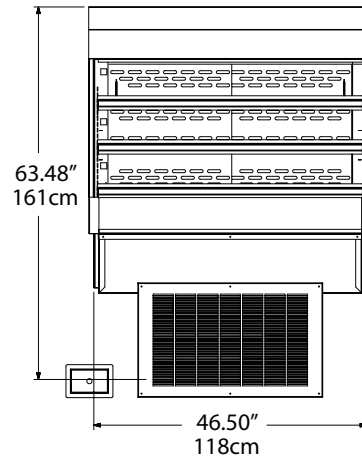
Plan View, ASM-36



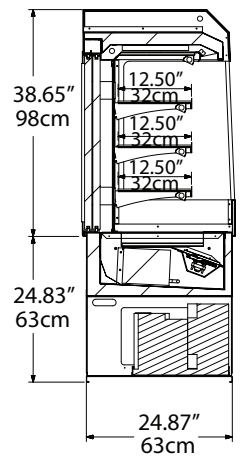
Plan View, ASM-48



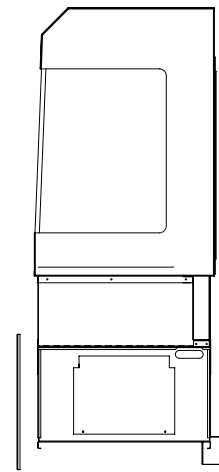
Elevation View, ASM-36



Elevation View, ASM-48



Left Section View,
ASM-36, ASM-48



Right Side View,
ASM-36, ASM-48

Specifications									
Model	W	D	H	Cutout Dimensions	Display Storage	Electrical	H.P.	Amps	NEMA Plug
ASM-36P	36.25" 92 cm	26.00" 66 cm	63.48" 161 cm	35.13" x 25.50" 89cm x 65cm	8.2ft³	115V-60Hz-1Ph	1/3	10.8	14-20P
ASM-48P	48.25" 123 cm	26.00" 66 cm	63.48" 161 cm	47.13" x 25.50" 120cm x 65cm	11.3ft³	115V-60Hz-1Ph	1/2	14.3	14-20P

Welbilt reserves the right to make changes to the design or specifications without prior notice.