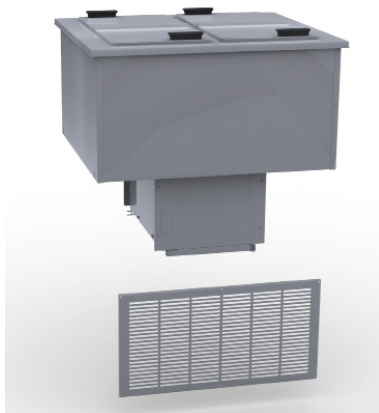


## N225P/N227P

### Self-Contained Drop-In Freezer

#### Models

- N225P 6 Gallon Drop In Freezer with Stainless Steel Lid
- N227P 12 Gallon Drop In Freezer with Stainless Steel Lid



N227P

#### Standard Features

- Suitable for ice cream storage
- 18-gauge stainless steel top
- Die stamped top opening with raised edge
- High-density environmentally friendly, Kyoto Protocol Compliant, Non ODP (Ozone Depletion Potential), Non GWP (Global Warming Potential) polyurethane foam throughout unit
- Mechanically cooled -5° to +40°F tank
- Folding removable cover with external handle
- 8' cord and plug
- Environmentally friendly R290 refrigerant
- One year parts and labor standard warranty

#### Options & Accessories

- Locking device
- Clear lid (shipped loose)
- Remote toggle switch assembly (shipped loose) (AS000-473-003W)

#### Specifications

##### Model N225P

Top of 18-gauge stainless steel, has 0.63" (1.73 cm) overhang front to back and 0.70" (1.78 cm) right to left, one die-stamped 10.50" (26.67 cm) x 20.68" (52.52 cm) opening with raised edges. Opening is fitted with insulated, folding, lift-off cover. N225P model available with optional acrylic lid which is sold separately, quantity of 1 required.

Freezer compartment interior is 22-gauge stainless steel and measures 10.81" (27.46 cm) x 22.12" (56.18 cm) x 12.18" (30.94 cm) high. Compartment sides are wrapped with refrigeration lines. Sides and bottom are insulated with high-density closed-cell environmentally friendly, Kyoto Protocol Compliant, Non ODP (Ozone Depletion Potential), Non GWP (Global Warming Potential) polyurethane. Unit is designed to maintain -5° to +40°F. Cabinet capacity is 6 gallons.

Condensing unit mounted below freezer compartment on 16-gauge steel frame, has 0.20 H.P. rating.

A stainless steel louver, 13" (33 cm) x 25" (63.5 cm), is supplied for field installation. The cutout size for the louver is 12.00" (30.48 cm) x 23.50" (59.68 cm).

##### Model N227P

Top of 18-gauge stainless steel, has 0.63" (1.73 cm) overhang front to back and 0.70" (1.78 cm) right to left, two die-stamped 10.50" (26.67 cm) x 20.68" (52.52 cm) opening with raised edges. Openings are fitted with insulated, folding, lift-off covers. N227P model available with optional acrylic lid which is sold separately, quantity of 2 required.

Freezer compartment has 22-gauge stainless steel interior and measures 24.25" (61.60 cm) x 22.12" (56.18 cm) x 12.18" (30.94 cm) high. Compartment sides are wrapped with refrigeration lines. Insulation on sides and on bottom is high-density closed-cell environmentally friendly, Kyoto Protocol Compliant, Non ODP (Ozone Depletion Potential), Non GWP (Global Warming Potential) polyurethane. Unit is designed to maintain -5° to +40°F. Cabinet capacity is 12 gallons.

0.25 H.P. condensing unit is mounted below freezing compartment on 16-gauge steel frame.

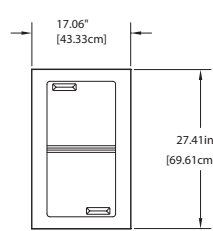
A stainless steel louver, 13" (33 cm) x 25" (63.5 cm), is supplied for field installation. The cutout size for the louver is 12.00" (30.48 cm) x 23.50" (59.68 cm).



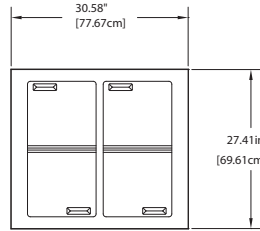
R290



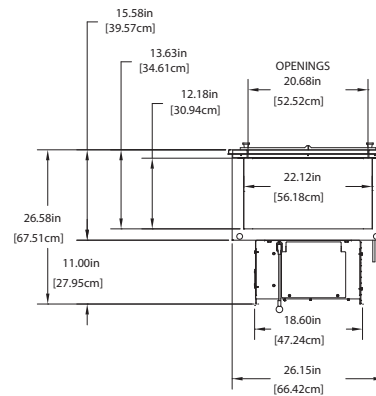
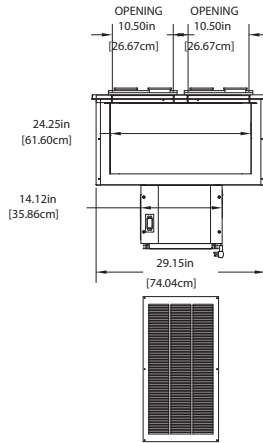
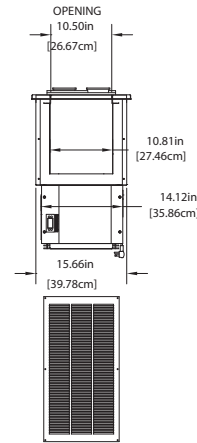
## N225P/N227P



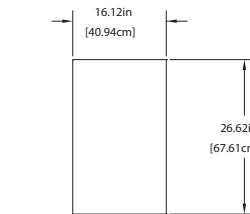
N225P



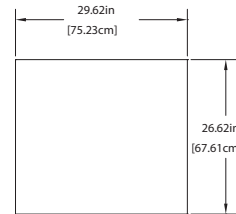
N227P



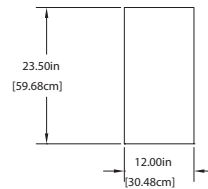
N225P/N227P  
END ELEVATION



N225P  
CUTOUT SIZE



N227P  
CUTOUT SIZE



N22XP  
LOUVER CUTOUT SIZE

### Specifications

Model	Capacity	H.P.	V/Hz/Ph	Amps	Nema Plug	Ship Weight	KWH
N225P	6 Gallons	0.20	115/60/1	1.8	5-15P	115lbs/52kg	1.19
N227P	12 Gallons	0.25	115/60/1	2.9	5-15P	191lbs/87kg	1.32

Welbilt reserves the right to make changes to the design or specifications without prior notice.