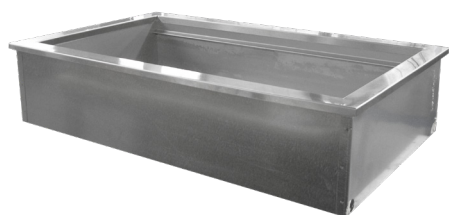




N8000N

Narrow Drop-In Ice Cooled Cold Pan

- N8046N 46" narrow ice cooled cold pan
- N8068N 68" narrow ice cooled cold pan



N8046N

Standard Features

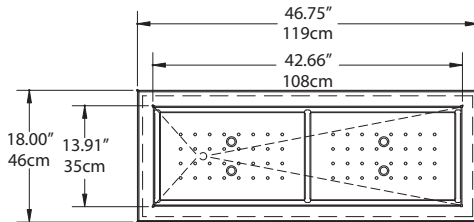
- 20-gauge stainless steel top construction
- 2 BF stainless steel interior liner
- Sectional removable perforated bottoms
- Adapter bars are provided standard for 12" x 20" openings
- Standard 1" plastic drain
- High density environmentally friendly, Kyoto Protocol Compliant, Non ODP (Ozone Depletion Potential), Non GWP (Global Warming Potential) polyurethane foam insulation throughout unit
- Galvanized exterior body
- Custom sizes available
- Non-marring press fit top gasket is supplied standard
- NSF-2 certified
- One year parts and labor standard warranty

Specifications

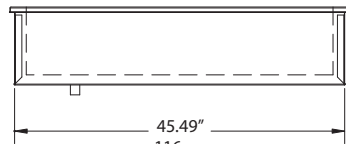
Top is one piece 20-gauge stainless steel. Interior liner is 22-gauge stainless steel with integral V-stamped pan rest and is creased to 1.00" (2.54 cm) diameter drain. Unit has a sectional, removable perforated stainless steel false bottom and is provided with adapter bars to allow placement of 12" x 20" (30.5 cm x 50.8 cm) pans. Unit is supplied with 1" (2.54 cm) plastic drain to be installed by customer. Exterior housing is 24-gauge galvanized steel. Unit is insulated with high density closed cell environmentally friendly, Kyoto Protocol Compliant, Non ODP (Ozone Depletion Potential), Non GWP (Global Warming Potential) polyurethane.



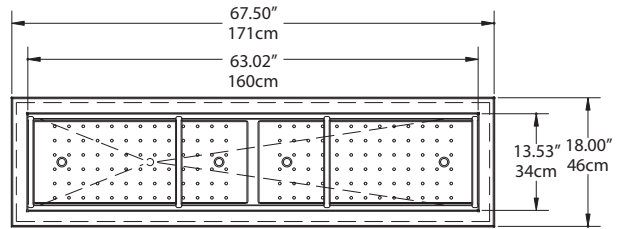
N8000N: Narrow Drop-In Ice Cooled Cold Pan



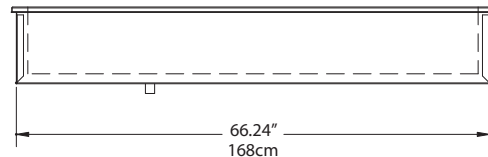
Plan View
N8046N



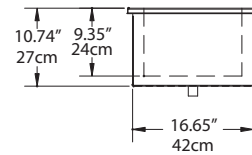
Elevation View
N8046N



Plan View
N8068N



Elevation View
N8068N



Side View
N8046N, N8068N

Specifications			
Model	Counter Cutout Dimensions (D X L)	12" X 20" Pan Capacity	Shipping Weight
N8046N	17.00" x 45.75" (43cm x 116cm)	2	100lbs/ 46kg
N8068N	17.00" x 66.50" (43cm x 169cm)	3	120lbs/ 55kg

Delfield reserves the right to make changes to the design or specifications without prior notice.