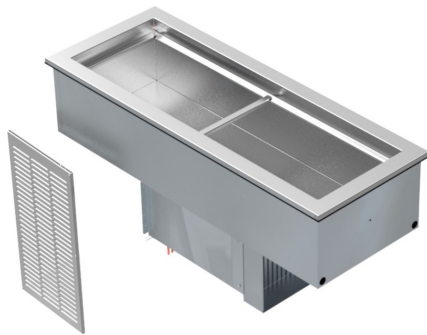


N8100NBP

Narrow Drop-In Self Contained Mechanically Cooled Refrigerated Cold Pans

Models

- N8146NBP Two 12" x 20" pan capacity
- N8168NBP Three 12" x 20" pan capacity



N8146NBP

Standard Features

- Integral V-stamped pan rest
- 20-gauge stainless steel top construction
- 2 BF stainless steel interior liner wrapped and spot clipped with refrigeration lines; thermal transfer compound is applied for superior cooling
- Adapter bars are provided standard for 12" x 20" openings
- Standard 1" plastic drain
- High density Environmentally friendly, Kyoto Protocol Compliant, Non ODP (Ozone Depletion Potential), Non GWP (Global Warming Potential) polyurethane foam insulation throughout unit
- Galvanized exterior body
- Non-marring press fit top gasket
- Condensing unit is suspended below on a 16-gauge galvanized frame
- R290 refrigerant
- 8' cord and plug
- Stainless steel louver provided for field installation
- One year parts and labor standard warranty

Options & Accessories

- Custom sizes and styles
- Single or double service flip-up sneezeguards
- Relocate compressor
- Mullion fan assembly
- Adapter bars

Specifications

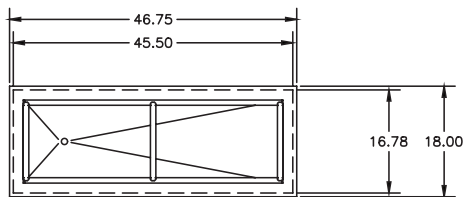
Top is one-piece 20-gauge stainless steel. Interior liner is 22-gauge stainless steel and is creased to a 1.00" (2.5cm) diameter drain. Integral V-stamped pan rest recessed 2" (5cm) to accommodate 12" x 20" (30cm x 51cm) pans 4" (10cm) or 6" (15cm) deep supplied by others. Product temperatures of 33°F (1°C) to 41°F (5°C) are maintained at 86°F (29°C) ambient room temperature, meeting NSF 7 requirements. Adapter bars for 12" x 20" (30cm x 51cm) pans are standard.

Sides are wrapped with refrigeration lines. Sides and bottom are fully insulated with high-density environmentally friendly, Kyoto Protocol Compliant, Non ODP (Ozone Depletion Potential), Non GWP (Global Warming Potential) closed-cell polyurethane. Exterior housing is 24-gauge galvanized steel.

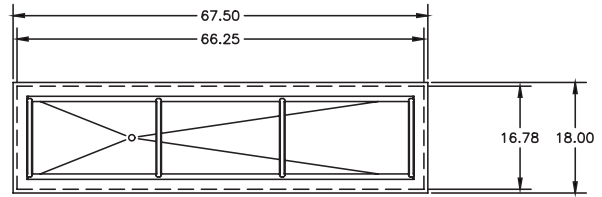
Condensing unit is suspended below the cold pan on a 16-gauge steel frame and uses R290 refrigerant. Electronic temperature control has a stand by to power down the cold pan. Unit has an 8' (2.4m) cord and NEMA 5-15P plug.

A stainless steel louver is provided for field installation on the front of the cabinet, 4" below top of counter; cutout dimension for each is 12" x 23.5" (30cm x 60cm).

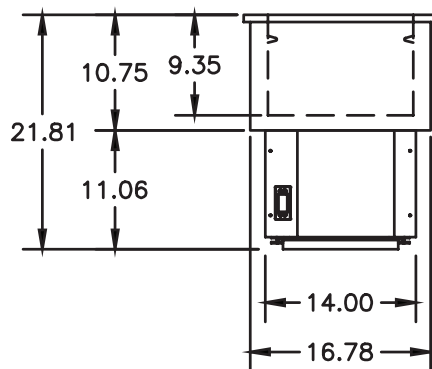
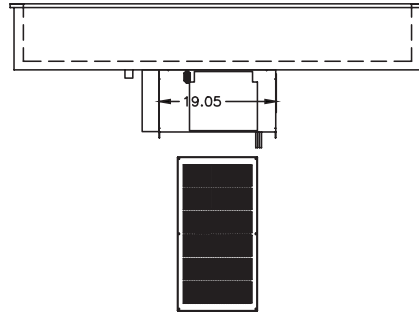
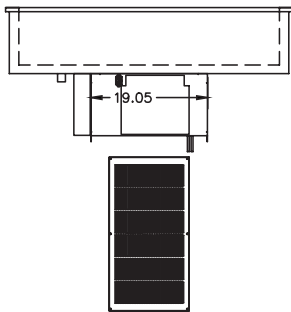




MODEL NO. N8146NBP



MODEL NO. N8168NBP



Specification									
Model	Counter Cutout Dimensions	12"x20" Pan Capacity	V/Hz/Ph	Amps	H.P.	Nema Plug	BTU Load	System Capacity	Ship Weight
N8146NBP	17.00" x 45.75" (43cm x 116cm)	2	115/60/1	2	1/6	5-15P	352	788	175lbs/80kg
N8168NBP	17.00" x 66.50" (43cm x 169cm)	3	115/60/1	2	1/6	5-15P	522	876	240lbs/109kg

Welbilt reserves the right to make changes to the design or specifications without prior notice.