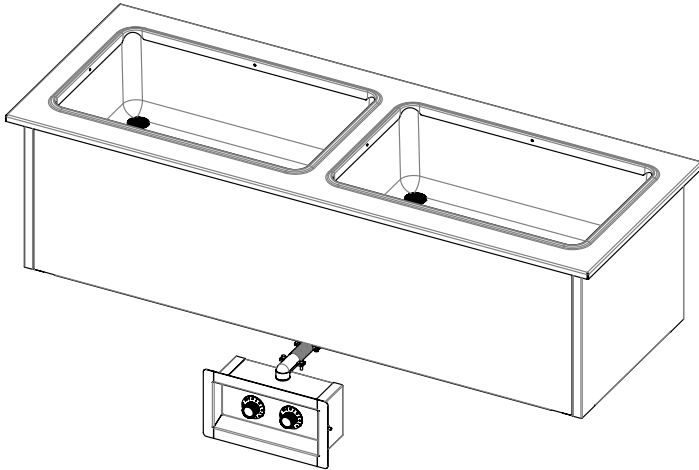




Your Solutions Partner

Specifications

F.O.B. Sedalia, Missouri 65301



ADI-2ESL-SW

OPTIONS:

- 3 phase Wiring (except **ADI-1ESL-SW**)
- Individual valves
- Manifold drains
- Master valve
- Designer Foodshields
- Adapter Plates
- Adapter Bars

AGENCY LISTING:



DUKE MANUFACTURING CO.
 2305 N. Broadway
 St. Louis, MO 63102
 800.735.3853 Toll Free
 314.231.5074 Fax
 www.dukemfg.com

Specification subject to change



Approval Stamp(s):

PRODUCT INFORMATION:

PROJECT: _____

ITEM: _____

QUANTITY: _____

MODEL:

Drop-Ins- Slimline

Hot Food - Electric - Sealed Well

- ADI-1ESL-SW** 24 1/4"L x 17 1/4"W x 12 3/4"H
- ADI-2ESL-SW** 46 1/4"L x 17 1/4"W x 12 3/4"H
- ADI-3ESL-SW** 68 1/4"L x 17 1/4"W x 12 3/4"H

TOP RIM:

- Heavy gauge, 300 Series stainless steel
- Overhang on front, back and ends w/locking tabs
- Vinyl foam gasket as sealant
- Die-stamped openings - 11 7/8" x 19 7/8"

HEAT COMPARTMENTS:

- 6-1/2" deep stainless steel liner, wet or dry operation
- Fully Insulated
- Sealed element in each compartment
 - 750 watt, 120 Volt/1 Ph
 - 900 watt, 208 Volt/1 Ph
 - 1200 watt, 240 Volt/1 Ph
- Individual open drains

CONTROL PANEL:

- Stainless steel face plate, plastic knobs
- UL approved
- Infinite switch controls in remote box

EXTERIOR HOUSING

- Heavy gauge paint grip steel

DROP-IN - SLIMLINE - HOT FOOD - ELECTRIC - SEALED WELLS

Catalog No. ADI-SLIMELECHFSW

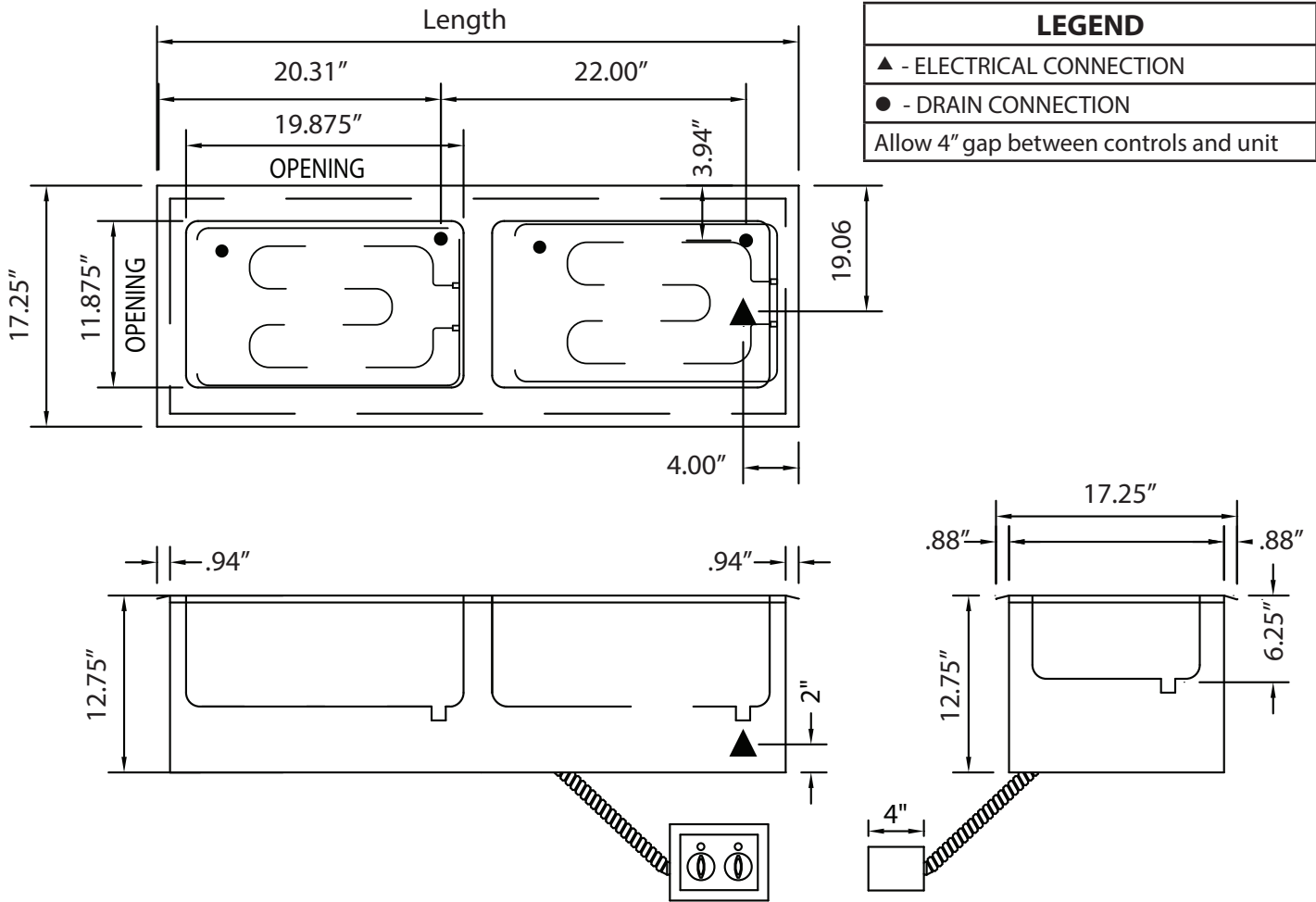
A.I.A. File No. 35-C-13

DROP-INS - SLIMLINE HOT FOOD ELECTRIC - SEALED WELL

A.I.A. File No. 35-C-13

Catalog No. ADI-SLIMELECHFSW

DROP-IN - SLIMLINE - HOT FOOD - ELECTRIC - SEALED WELLS



DIMENSIONS:

FREIGHT CLASS: 100

Model	Length		Width		Height		Cutout Length		Cutout Width		Cube ft. crated	Weight	
	in.	cm	in	cm	in	cm	in	cm	in	cm		lbs	kg
ADI-1ESL-SW	24.25	61.6	17 ¼	43.8	12.75	32.4	23	58.4	16	40.6	7.7	80	36.4
ADI-2ESL-SW	46.25	117.5	17 ¼	43.8	12.75	32.4	45	114.3	16	40.6	13.3	135	61.4
ADI-3ESL-SW	68.25	173.1	17 ¼	43.8	12.75	32.4	67	170.2	16	40.6	19.0	185	84.1

REMOTE CONTROL CUTOUT IS 9" X 4.375"

ELECTRICAL SPECIFICATIONS:

Model	120V 750W			208V 900W			240V 1200W		
	Watt	Amps	NEMA	Watt	Amps	NEMA	Watt	Amps	NEMA
ADI-1ESL-SW	750	6.3	5-15	900	4.3	6-20	1200	5.0	6-20
ADI-2ESL-SW	1500	12.5	LS-30	1800	8.7	6-20	2400	10.0	6-20
ADI-3ESL-SW	2250	18.8	L5-30	2700	13.0	6-20	3600	15.0	L6-30

(Consult factory for 3-phase electrical requirements and other options)



Duke Manufacturing Co.
 2305 N. Broadway
 St. Louis, MO 63102

Phone: 314-231-1130
 Toll Free: 1-800-735-3853
 Fax: 314-231-5074

www.dukemfg.com