



# PAINT FINISHES

## Standard Powder Coat Paint Colors

You must specify your choice of available colors when ordering.



**RACING RED**  
#217154



**HOLLYBERRY RED**  
#217107



**PASTEL ORANGE**  
#217119 / RAL 2003



**ZINC YELLOW**  
#217181 / RAL 1018



**SULFUR YELLOW**  
#217128 / RAL 1016



**MINT GREEN**  
#217126 / RAL 6029



**YELLOW GREEN**  
#217124 / RAL 6018



**ULTRAMARINE BLUE**  
#217116 / RAL 5002



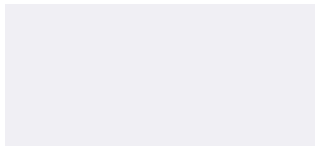
**SKY BLUE**  
#217120 / RAL 5015



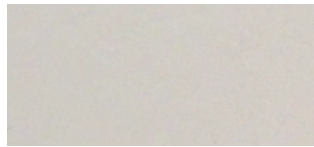
**PURPLE VIOLET**  
#217113 / RAL 4007



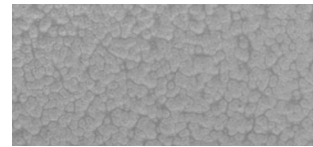
**TRAFFIC PURPLE**  
#217122 / RAL 4006



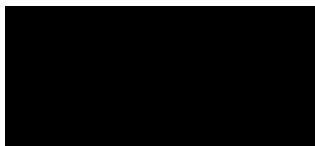
**BRIGHT WHITE**  
#217105



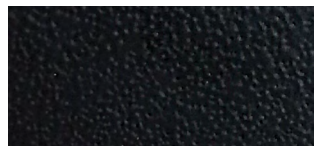
**STONE GRAY**  
#217152



**SILVER HAMMER**  
#217102



**SEMI-GLOSS BLACK**  
#217101



**TEXTURED BLACK**  
#217125

### Actual Colors May Vary

The colors above were matched to the actual product colors and finishes in bright daylight. Discrepancies between paper and metal may cause slight variances. Duke will do everything in our power to assure consistency and accuracy.

*For actual finish samples, please contact Duke's St. Louis office by calling 1-800-735-3853.*

### Lead Times

Lead times may vary by color or finish based on availability. Duke recommends matte finish; single color; and non-textured laminates for shortest lead times.