



**John
BOOS**
Since 1887

ITEM #: _____ QTY: _____
MODEL #: _____
PROJECT NAME: _____

041221

3601 S. Banker St. Effingham, IL 62401 • Ph: (888) 431-2667 • Fax: (800) 433-2667

"UBS3-18" UNDERBAR 3 COMPARTMENT SINK



SLIM-LINE, 18" WIDTH

STANDARD FEATURES:

- ALL 18 GAUGE STAINLESS STEEL CONSTRUCTION
- TYPE 300 STAINLESS STEEL WITH #4 POLISH, SATIN FINISH
- SLIM LINE 18" DEEP FRONT TO BACK
- STANDARD PRE-DRILLED HOLES ON SIDES FOR ATTACHING ADJACENT UNITS TOGETHER
- REMOVABLE FAUCET PLATES WITH 4" ON-CENTER SPLASH MOUNT FAUCET HOLES
- REMOVABLE PERFORATED DRAINBOARD INSERTS FOR INCREASED AIR CIRCULATION
- CREASED DRAINBOARDS FOR IMPROVED DRAINAGE
- STAINLESS STEEL FRONT TO BACK BRACING



UBS3-1860-2D12

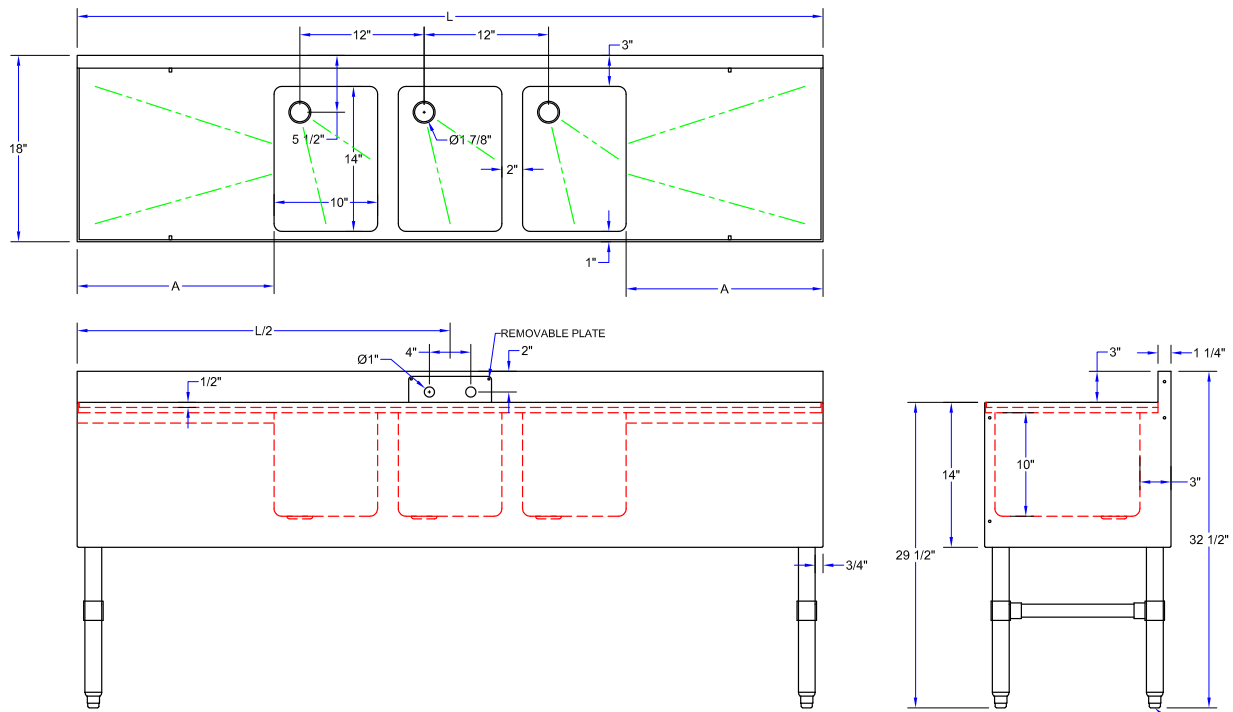
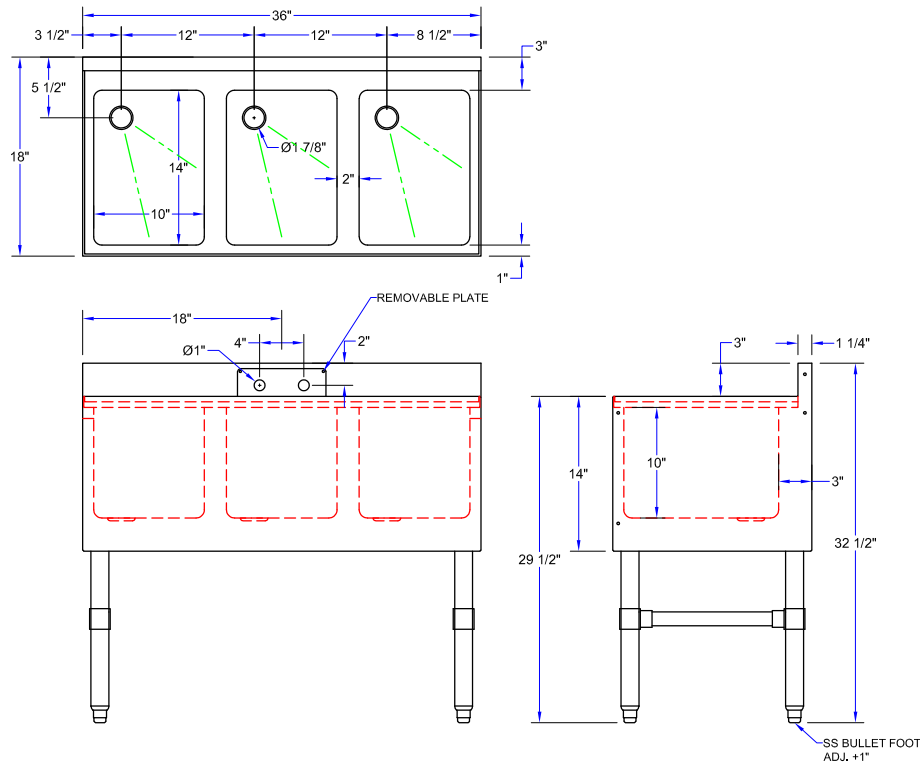
SPECIFICATIONS:

- MATERIALS
 - TOP: 18 GAUGE TYPE 300 STAINLESS STEEL
 - FRONT APRON: 18 GAUGE TYPE 300 STAINLESS STEEL
 - BACKSPLASH: 18 GAUGE TYPE 300 STAINLESS STEEL
 - SIDES: 18 GAUGE TYPE 300 STAINLESS STEEL
- SINK BOWL
 - FABRICATED SINK BOWL: 14" X 10" X 10" DEEP
- LEGS AND BRACING
 - BOLT ON 1-5/8" STAINLESS STEEL LEGS FOR FAST INSTALLATION
 - 1-1/4" FRONT TO BACK BRACING
 - 1" ADJUSTABLE STAINLESS STEEL BULLET FEET
- MOUNTING OPTIONS
 - Z-CLIP TO MOUNT TO WALL
 - BOLT TO ADJACENT UNDERBAR PIECE
 - MOUNTING OPTIONS ALLOW FOR FLEXIBLE INSTALLATION OPTIONS TO REMOVE BACK OR FRONT AND BACK LEGS FOR A CLEAN INSTALLATION
- PLUMBING
 - 1-7/8" DRAIN WITH BASKET
 - 1-1/2" NPS DRAIN CONNECTION
- NSF CERTIFIED

| ACCESSORIES | DESCRIPTION |
|---------------|-------------------------------------|
| UBSS-18-L | SLIM-LINE LEFT HAND SIDE SPLASH |
| UBSS-18-R | SLIM-LINE RIGHT HAND SIDE SPLASH |
| PBF-4SM2-10LF | HEAVY DUTY FAUCET |
| PBF-W2-10LF | ECONOMY FAUCET |
| PB-WL-36 | FLEXIBLE SHALLOW MOUNT FAUCET HOSES |

3 COMPARTMENT SINK - SLIM-LINE, 18" WIDTH

| MODEL # | SIZE (LXWXH) | LENGTH (L) | DRAINBOARD (A) | WT. (LBS) |
|----------------|-----------------|------------|----------------|-----------|
| UBS3-1836 | 36"X18"X32-1/2" | 36" | - | 61 |
| UBS3-1860-2D12 | 60"X18"X32-1/2" | 60" | 2X12" | 89 |
| UBS3-1872-2D18 | 72"X18"X32-1/2" | 72" | 2X18" | 100 |
| UBS3-1884-2D24 | 84"X18"X32-1/2" | 84" | 2X24" | 111 |



3 COMPARTMENT SINK - SLIM-LINE, 18" WIDTH

| MODEL # | SIZE (LXWXH) | LENGTH (L) | DRAINBOARD (A) | WT. (LBS) |
|----------------|-----------------|------------|----------------|-----------|
| UBS3-1836 | 36"X18"X32-1/2" | 36" | - | 61 |
| UBS3-1860-2D12 | 60"X18"X32-1/2" | 60" | 12" | 89 |
| UBS3-1872-2D18 | 72"X18"X32-1/2" | 72" | 18" | 100 |
| UBS3-1884-2D24 | 84"X18"X32-1/2" | 84" | 24" | 111 |

SOME UNITS SHIP UNASSEMBLED FOR REDUCED SHIPPING COST. ALL DIMENSIONS ARE TYPICAL. TOLERANCE +/- .500"

John Boos & Co. is constantly engaged in a program of improving products and therefore reserves the right to change specifications without prior notice.

