



# STAINLESS STEEL ENCLOSED BASE CABINETS with DRAWERS

**Item #:** \_\_\_\_\_ **Qty #:** \_\_\_\_\_  
**Model #:** \_\_\_\_\_  
**Project #:** \_\_\_\_\_

**Features Fully Enclosed NSF Drawers**

5" Backsplash



Hinged Doors



Sliding Doors

**FEATURES:**

5" SPLASH is furnished with a 1 5/8" sanitary rolled rim on the front side and 1 5/8" square bend edges on the 2 sides and a 5" splash with a 1" return on the rear side.

**CONSTRUCTION:**

All TIG welded. Exposed areas finished to match adjacent surfaces.  
 Entire Top is mechanically polished to a satin finish and is sound deadened.  
 UNIT-BODY DESIGN sides, back and fixed mid shelf are welded to form a single rigid structure.

**MATERIAL:**

TOP is 14 gauge stainless steel type "304" series with galvanized understructure.  
 BODY is 18 gauge stainless steel type "430" series.  
 LEGS and 1" adjustable bullet feet with gussets are Stainless Steel.

**HINGED DOOR CABINET**

MODEL #	LENGTH	# of Drawers	# of Doors	Wt.
HDRC-305	60"	2	2	350 Lbs.
HDRC-306	72"	2	4	380 Lbs.
HDRC-307	84"	3	4	450 Lbs.
HDRC-308	96"	3	4	515 Lbs.
HDRC-3010	120"	4	4	650 Lbs.

**SLIDING DOOR CABINET**

MODEL #	LENGTH	# of Drawers	# of Doors	Wt.
SDRC-305	60"	2	2	350 Lbs.
SDRC-306	72"	2	4	380 Lbs.
SDRC-307	84"	3	4	450 Lbs.
SDRC-308	96"	3	4	515 Lbs.
SDRC-3010	120"	4	4	650 Lbs.

**ACCESSORIES**

Model #	Description	Qty.
TA-105	Mod. to 24" Width	
TA-110	Mod. to 36" Width	
TA-14	Drawer Lock	
TA-46	Door Locks	

**Mid Shelves and Adjustable Shelves (TA-116) Are Available**



**Customer Service Available To Assist You 1-800-645-3166 8:30 am - 8:00 pm E.S.T.**

Email Orders To: [customer@advancetabco.com](mailto:customer@advancetabco.com). For Smart Fabrication™ Quotes, Email To: [smartfab@advancetabco.com](mailto:smartfab@advancetabco.com) or Fax To: 631-586-2933

**NEW YORK**  
 Fax: (631) 242-6900

**GEORGIA**  
 Fax: (770) 775-5625

**TEXAS**  
 Fax: (972) 932-4795

**NEVADA**  
 Fax: (775) 972-1578

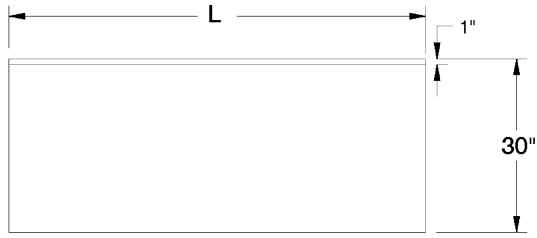
# DETAILS and SPECIFICATIONS

TOL ± .500"

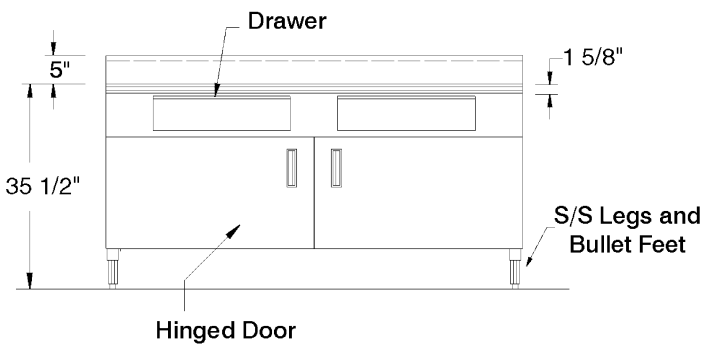
Units 7' and larger are furnished with 6 legs.

ALL DIMENSIONS ARE TYPICAL

## HDRC Series



Bullnose Front  
Square Sides

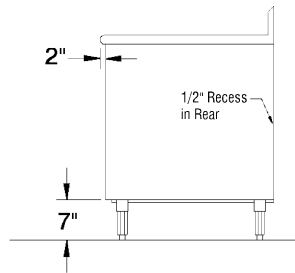


## OPTIONAL ENCLOSED BASE ACCESSORIES

- TA-25P ..... Plate Casters for Enclosed Base Units
- TA-54 ..... Removable Kick Plate
- TA-109 ..... Rear Flush Finished Inset Panel

### TA-116 ADJUSTABLE ENCLOSED BASE CABINET MID SHELF

*Shelves Over 36" In Length Require Multiple Sections With Center Partition.*



## SDRC Series



Bullnose Front  
Square Sides

