

D**STATIONARY TRI-LEG
DIRECT STEAM KETTLE**
 JOB NAME: _____
 ITEM NO.: _____
 NO. REQUIRED: _____

- MODELS:**
- F-20L 20 Gallon (76 liter)
 - F-30L 30 Gallon (114 liter)
 - F-40L 40 Gallon (152 liter)
 - F-60L 60 Gallon (227 liter)
 - F-80L 80 Gallon (303 liter)
 - F-100L 100 Gallon (379 liter)

DESCRIPTION:

Will be a Market Forge Direct Connected Stationary Tri-Leg Steam Jacketed Kettle.

Kettle will be constructed of welded satin finish stainless steel, type 304. A double wall interior around the kettle will form a steam jacket around the lower 2/3 of the kettle. The kettle bottom will be of elliptical design for superior heat circulation. Tri-leg mounting frame of stainless steel pipe will conceal the steam piping. Each leg will be fitted with a four-hole adjustable flange foot for securing to the floor. Unit will include as standard a Steam Control Kit (CKT-1).

OPERATION WILL BE BY: Direct steam at 5–30 PSI (0.3–2.1 kg/cm²). Over 30 PSI (2.1 kg/cm²), a pressure reducing valve is required.

STEAM FLOW REQUIREMENTS: 34 lbs. (15.5 kg) steam per hour or 1 BHP per 20 gallons (76 liters) of kettle capacity.

MODEL	BHP/HR	LBS STEAM/HR	SHIP WT.
F-20L	1.0	34.5	155 lbs.
F-30L	1.5	52.0	180 lbs.
F-40L	2.0	69.0	190 lbs.
F-60L	3.0	103.5	265 lbs.
F-80L	4.0	138.0	308 lbs.
F-100L	5.0	172.5	360 lbs.



F-40L Shown

STANDARD FEATURES:

- One-Piece Counterbalanced Hinged Stainless Steel Cover for 20, 30 and 40-Gallon Kettles.
- One-Piece Spring Assist Hinged Stainless Steel Cover for 60, 80 and 100-Gallon Kettles.
- 2" (50mm) Draw-Off Valve with Strainer.

OPTIONAL AT EXTRA COST:

- One-piece lift-off stainless steel cover.
- Double pantry faucet with swing spout and mounting bracket.
- Single pantry faucet with swing spout and mounting bracket.
- Triple bracket assembly.
- 3" (76mm) draw-off valve with strainer.
- Steam trap and strainer.
- Steam trap assembly, includes: Steam control valve (*steam inlet globe valve*), Steam trap and Line strainer.
- Check valve.
- Graduated measuring stick.
- Wall models (*consult factory*).
- Type 316 stainless steel liner (*for high acid content over 40 gallons*).
- H.P. 50 PSI (3.5 kg/cm²) Rated.
- PRV Pressure Reducing Valve.

The manufacturer reserves the right to modify materials and specifications without notice.

 SPEC SHEET: S-2117K
 10/13

FOOD SERVICE EQUIPMENT
 Stationary Tri-Leg Direct Steam Kettle

MARKET FORGE
 INDUSTRIES INC.

 35 Garvey Street • Everett • MA • 02149
 Tel: (617) 387-47100 • Toll Free: (866) 698-3188 • Fax: (617) 387-4456 • Outside MA Fax: (800) 227-2659
 E-Mail: custserv@mfi.com • Website: www.mfi.com

D

STATIONARY TRI-LEG DIRECT STEAM KETTLE

DETAILS & DIMENSION

MODEL	CAPACITY	A	B	C	D	E	F (2")	F (3")	G (2")	G (3")	H	J	K
F-20L	20 Gallon 76 liters	21 533	18 457	37 940	22.75 578	16 406	12.75 324	14 356	17 432	16.5 419	25.88 657	59.75 1518	17.5 445
F-30L	30 Gallon 114 liters	24 610	20 508	37 940	25.88 657	17.5 445	13.5 343	15.25 387	15 381	14.5 368	26.88 683	62.88 1597	20.5 521
F-40L	40 Gallon 152 liters	26 660	22.5 572	37 940	27.88 708	18.5 470	14.25 362	16.5 419	12.5 318	12 305	23.88 606	64.88 1648	22.5 572
F-60L	60 Gallon 227 liters	29.5 749	26 660	40.5 1029	31.38 797	17.75 451	15.5 394	17.25 438	12.5 318	12 305	24.69 627	72.88 1851	25.75 654
F-80L	80 Gallon 303 liters	33 838	28 711	42.5 1080	34.75 883	19.5 495	17.5 445	19.25 489	10.5 267	10 254	23.88 606	75.25 1911	29.25 743
F-100L	100 Gallon 379 liters	35.5 902	30 762	44.5 1130	37.25 946	20.75 527	17 432	19.25 489	12.5 318	12 305	26.63 676	81.75 2076	31.75 806

SPEC SHEET: S-2117K
10/13

FOOD SERVICE EQUIPMENT
Stationary Tri-Leg Direct Steam Kettle

SERVICE CONNECTIONS

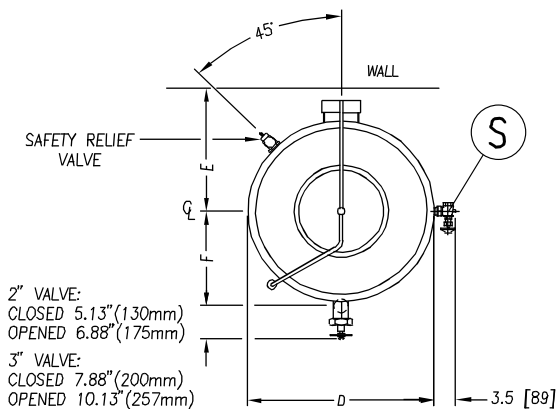
Direct Steam

S	Steam Supply - 3/4" IPS (19mm) at 5-30 PSI (0.3-2.1 kg/cm ²). Optional 5-45 PSI (0.3-3.1 kg/cm ²).*
CR	Condensate Return - 1/2" IPS (13mm)†

* Pressure reducing valve is required if incoming pressure exceeds rating at kettle.

† Optional at extra cost.

Optional cold and hot water faucet: 3/8" (10mm) O.D. tubing to faucet.

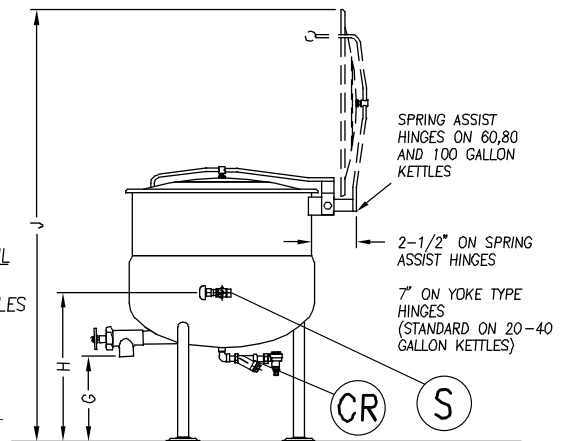
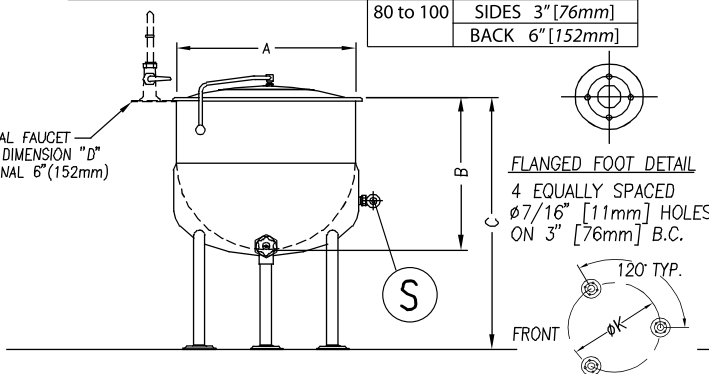


2" VALVE:
CLOSED 5.13" (130mm)
OPENED 6.88" (175mm)

3" VALVE:
CLOSED 7.88" (200mm)
OPENED 10.13" (257mm)

MODEL	SPRING ASSIST HINGES	MODEL	YOKE TYPE HINGES
Gallon	MIN. CLEANANCE	Gallon	MIN. CLEANANCE
ALL	SIDES 3" [76mm]	20 to 60	SIDES 3" [76mm]
	BACK 0.5" [13mm]		BACK 5" [127mm]
		80 to 100	SIDES 3" [76mm]
			BACK 6" [152mm]

OPTIONAL FAUCET
ALLOW DIMENSION "D"
ADDITIONAL 6" (152mm)



It is our policy to build equipment which is design certified by A.G.A., U.L., A.S.M.E., N.S.F., C.G.A. and C.S.A. However, a continuing program of product improvement makes it necessary to submit new models to the agencies as they are developed and consequently not all models bear the appropriate agency labels at all times.



MARKET FORGE
INDUSTRIES INC.

PRINTED IN U. S. A.

35 Garvey Street • Everett • MA • 02149
Tel: (617) 387-47100 • Toll Free: (866) 698-3188 • Fax: (617) 387-4456 • Outside MA Fax: (800) 227-2659
E-Mail: custserv@mfi.com • Website: www.mfi.com

A City Discount