

E**STATIONARY TRI-LEG
ELECTRIC KETTLE**JOB NAME: _____
ITEM NO.: _____
NO. REQUIRED: _____

- MODELS:**
- F-20LE
 - F-30LE
 - F-40LE
 - F-60LE
 - F-80LE
 - F-100LE

DESCRIPTION:

Will be a Market Forged Self-generating electric, pedestal, steam jacketed kettle model:

<input type="checkbox"/> F-20LE	20-Gallon	76 liters
<input type="checkbox"/> F-30LE	30-Gallon	114 liters
<input type="checkbox"/> F-40LE	40-Gallon	152 liters
<input type="checkbox"/> F-60LE	60-Gallon	227 liters
<input type="checkbox"/> F-80LE	80-Gallon	303 liters
<input type="checkbox"/> F-100LE	100-Gallon	380 liters

Kettle will be constructed of welded satin finish, stainless steel type 304. A double wall kettle interior will form a steam jacket around the lower 2/3 of the kettle. The jacket will enclose heat elements (*Which will be easily removable for service*), water and antifreeze design for superior heat distribution. 20, 30 and 40-gallon kettles have 316 type stainless steel liner as standard.

Unit will be mounted on a stainless steel tri-leg pipe fitted legs and adjustable flanged feet with four holes for securing kettle to floor.

Controls will be integrally mounted to the kettle base and will include a power switch, thermostat, pilot light, vacuum/pressure gauge, safety valve, and low water shut-off.

Kettle will operate in a temperature range of 140° to 290°F (60° to 144°C) at a maximum pressure of 50 PSI (3.5kg/cm²).

Convenience feature will include a counterbalanced hinged stainless steel cover and a 2" (51mm) sanitary draw-off valve with strainer and heat resistant handle.

**OPERATION WILL BE BY:**

Electrically, self-generating, closed steam system built in accordance with A.S.M.E. codes, and equipped for operation on:

- 208 VAC
 - 240 VAC
 - 480 VAC, 3 phase, 50/60 Hz*
 - 220/380 VAC, 3 phase, 4 wire 50 Hz
 - 240/415 VAC, 3 phase, 4 wire 50 Hz
- * Optional at extra cost.

OPTIONAL ITEMS AT EXTRA COST:

- Triple Basket Assembly.
- 3" (76mm) Draw-Off Valve with Strainer.
- Wall Models (*Consult Factory*)
- Graduated Measuring Stick.
- Double Pantry Faucet with Swing Spout and Mounting Bracket.
- Single Pantry Faucet with Swing Spout and Mounting Bracket.
- Type 316 Stainless Steel Liner for High Acid Content Products (*for 60, 80 and 100-gallon kettles*).

The manufacturer reserves the right to modify materials and specifications without notice.

SPEC SHEET: S-2265G
12/12FOOD SERVICE EQUIPMENT
Stationary Tri-Leg Electric Kettle

PRINTED IN U. S. A.

**MARKET FORGE**
INDUSTRIES INC.

35 Garvey Street • Everett • MA • 02149
Tel: (617) 387-47100 • Toll Free: (866) 698-3188 • Fax: (617) 387-4456 • Outside MA Fax: (800) 227-2659
E-Mail: custserv@mfi.com • Website: www.mfi.com

A City Discount

E

STATIONARY TRI-LEG ELECTRIC KETTLE

DETAILS & DIMENSION

SPEC SHEET: S-2265G
12/12

FOOD SERVICE EQUIPMENT
Stationary Tri-Leg Electric Kettle

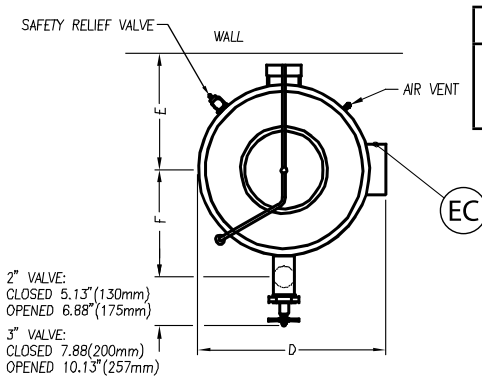
Available kW

AMPS per Line

MODELS	STANDARD	OPTIONAL
F-20LE	12	n/a
F-30LE	15	n/a
F-40LE	18	24
F-60LE	18	24, 33
F-80LE	18	24, 33
F-100LE	24	33

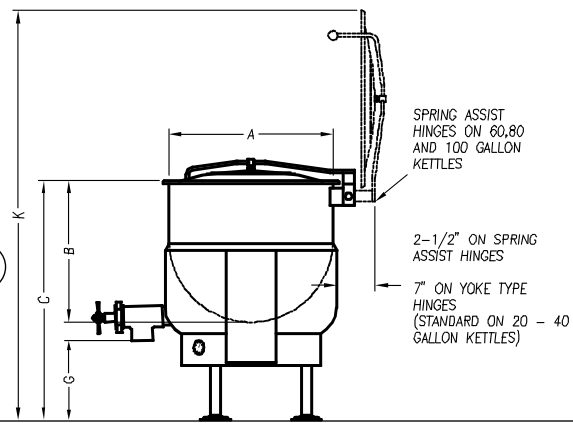
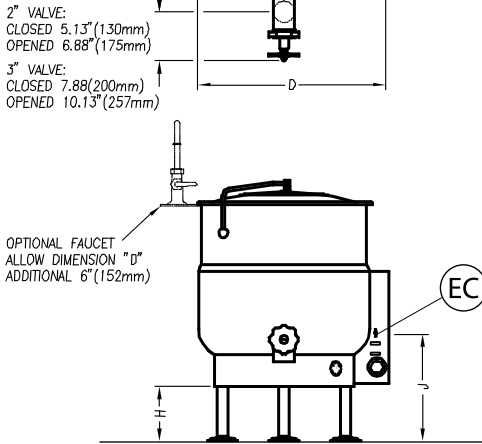
kW	pH	208V	220V	240V	380V	415V	480V	600V
12	1 3	57.5 33.3	54.5 31.5	50.0 28.9	- 18.2	- 16.7	- 14.4	- 11.6
15	1 3	72.1 41.6	68.2 39.4	62.5 36.1	- 22.8	- 20.9	- 18.0	- 14.5
18	1 3	86.5 50.0	81.8 47.2	75.0 43.3	- 27.3	- 25.0	- 21.7	- 21.7
24	3	66.6	63.0	57.7	36.5	33.4	28.9	23.1
33	3	91.6	86.6	79.4	50.1	45.9	39.7	31.8

MODELS		A	B	C	D	E	F (2")	F (3")	G (2")	G (3")	H	J	K	L
F-20LE	inches mm	21 533	18 457	38 965	23.75 629	18.5 470	14.75 375	15.5 394	18 457	17.5 445	14 356	21 533	60 1537	16.75 425
F-30LE	inches mm	24 610	20 508	38 965	27.75 705	20 508	16 406	16.5 419	15.75 400	15.25 387	12.5 318	19 483	63.5 1613	18.312 465
F-40LE	inches mm	26 660	22.5 572	38 965	29.75 756	21 533	17 432	18 457	13.5 343	13 330	9 229	17 432	65 1651	19.938 506
F-60LE	inches mm	29.5 749	26 660	42 1067	33.75 857	19 483	18 457	19.25 489	14 356	13.5 343	11 280	17.25 438	75 1905	23.125 587
F-80LE	inches mm	33 838	28 711	45 1143	36.75 933	20.5 521	19.5 495	20.5 521	15 381	14.5 368	12.75 324	18 458	81 2058	26.25 667
F-100LE	inches mm	35.5 902	33 838	48 1219	40 1016	22 559	21.5 546	22.5 572	15 381	14.5 368	13 330	20.5 521	87 2210	29.438 748



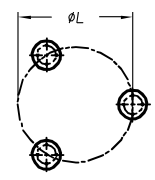
SERVICE CONNECTIONS	
EC	Electrical Connection to be as specified on data plate.

MODEL	SHIPPING WT.	MIN. CLEARANCE	
F-20LE	196 lbs. (89kg)	Sides Back	3" [76mm] 3" [76mm]
F-30LE	226 lbs. (103kg)		
F-40LE	255 lbs. (116kg)		
F-60LE	390 lbs. (177kg)		
F-80LE	445 lbs. (202kg)		
F-100LE	480 lbs. (218kg)		



4 EQUALLY SPACED
Ø7/16" [11mm] HOLES
ON 3" [76mm] B.C.

FLANGED FOOT DETAIL



IN [mm]

2599R5

It is our policy to build equipment which is design certified by U.L., A.S.M.E. and C.S.A. However, a continuing program of product improvement makes it necessary to submit new models to the agencies as they are developed and consequently not all models bear the appropriate agency labels at all times.



MARKET FORGE

INDUSTRIES INC.

35 Garvey Street • Everett • MA • 02149
Tel: (617) 387-47100 • Toll Free: (866) 698-3188 • Fax: (617) 387-4456 • Outside MA Fax: (800) 227-2659
E-Mail: custserv@mfi.com • Website: www.mfi.com

A City Discount