



"FBLS" Stainless Steel Top Work Tables

BUDGET SERIES -----BUDGET SERIES -----BUDGET SERIES -----

w/ 18 Gauge Stainless Steel Work Top
w/ Stainless Steel Base and Undershef



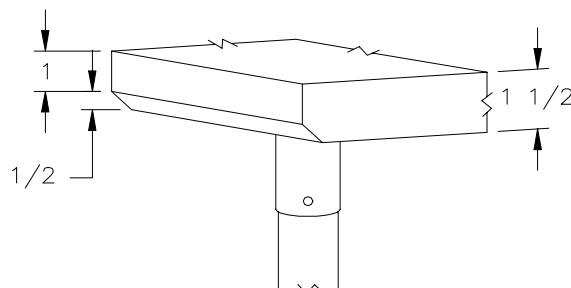
**18 GAUGE TOP w/
STAINLESS STEEL
LEGS & UNDERSHELF**

24"WIDE	Qty	30"WIDE	Qty
FBLS2424		--	
FBLS3024		FBLS3030	
FBLS3624		FBLS3630	
FBLS4824		FBLS4830	
FBLS6024		FBLS6030	
FBLS7224		FBLS7230	
FBLS9624		FBLS9630	

FEATURES:

- * 18 Gauge Stainless Steel Top
Type 430 stainless steel mechanically polished, satin finish
- * Top is Sound Deadened
- * 1 1/2" Stallion Edge on front and rear with side edges 90 degree bend down for table line-up
- * Stainless Steel Base and Undershef
- * Undershef is adjustable to desired height
- * Adjustable bullet feet
- * Shipped knocked-down, easy - to - assemble
- * All models are approved by the National Sanitation Foundation and the U.S. Department of Agriculture.

Note: FBLG" standard w/stallion edge front and rear. For 1 1/2" backsplash, use prefix "U" I.E. UFBLSO69, same price.



STALLION
SAFETY
EDGE

CONSTRUCTION:

Top: Stainless Steel Tops are TIG welded, Exposed welds are polished to match adjacent surface.

MATERIAL:

- Top: 18 gauge stainless steel
Type 430 stainless steel mechanically polished, satin finish
- Shelf: 18 gauge Stainless Steel
- Legs: 1 5/8" Round O.D., 16 gauge tubular stainless steel
- Gussets: Stainlkess Steel
- Feet: 1" adjustable plastic bullet feet

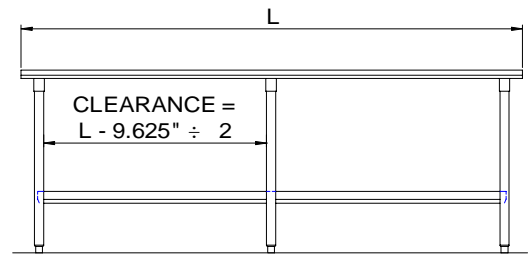
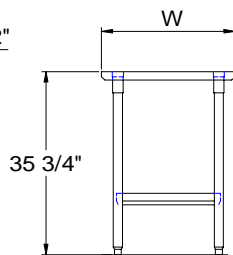
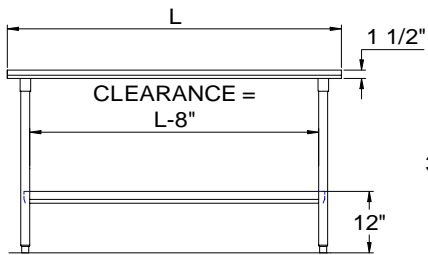
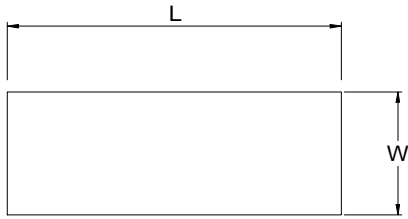
**OPTIONAL
ACCESSORIES**

	MODEL #	Qty
REAR 1-1/2" BACKSPASH		

John Boos & Co

315 South First Street - Effingham, IL 62401
Phone: 217-347-7701 - Fax: 217-347-7705
Email: sales@johnboos.com - Web-site: www. johnboos.com

DETAILED SPECIFICATIONS



All units ship unassembled for reduced shipping cost.
 Units 7 ft. and larger are furnished with six legs.
 All dimensions are typical.
 Tolerance +/- .500".

Finished size of undershelf.
 Shelf length = length minus 4.875"
 Shelf width = width minus 4.25"

18 GAUGE TOP w/ STAINLESS STEEL LEGS & UNDERSHELF

L	24" WIDE	WT.	30" WIDE	WT.
24	FBLS2424	40	--	
30	FBLS3024	45	FBLS3030	50
36	FBLS3624	50	FBLS3630	56
48	FBLS4824	61	FBLS4830	69
60	FBLS6024	71	FBLS6030	82
72	FBLS7224	83	FBLS7230	94
96	FBLS9624	111	FBLS9630	128

John Boos & Co

315 South First - Effingham, IL 62401 Phone: 217-347-7701 - Fax: 217-347-7705
 Email: sales@johnboos.com - Web-site: www.johnboos.com



March 2011

John Boos is constantly engaged in a program of improving products and therefore reserves the right to change specification without prior notice