

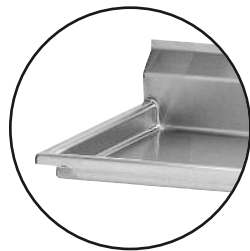


STAINLESS STEEL

FE Series - 18 Gauge Fabricated Sinks



Item #: _____ **Qty #:** _____
Model #: _____
Project #: _____



K-700
Removable
Side Splashes
 Fits Left OR Right Side

FEATURES:

- Backsplash has tile edge for ease of installation.
- Sink bowls are 3/4" coved corner and meet NSF requirements.
- Rolled Rim Edge for additional strength.
- Sink Bowls are 12" deep for greater capacity.
- 9" Backsplash.

CONSTRUCTION:

- All TIG welded.
- Welded areas blended to match adjacent surfaces and to a satin finish.
- Gussets welded to a die-embossed reinforced plate.

MATERIAL:

- 1 5/8" diameter galvanized legs with 1" adjustable plastic bullet feet.
- Entire unit is 18 gauge 304 stainless steel.
- Gussets - galvanized steel.

MECHANICAL:

- Supply is 1/2" IPS hot & cold.
- Faucet holes on 8" centers.
- Faucets are not included (**see accessories**).
- Waste drains are 1 1/2" IPS S/S basket type, located in center of sink bowl, and are included.



Customer Service Available To Assist You 1-800-645-3166 8:30 am - 8:00 pm E.S.T.

Email Orders To: customer@advancetabco.com. For Smart Fabrication™ Quotes, Email To: smartfab@advancetabco.com or Fax To: 631-586-2933

NEW YORK
 Fax: (631) 242-6900

GEORGIA
 Fax: (770) 775-5625

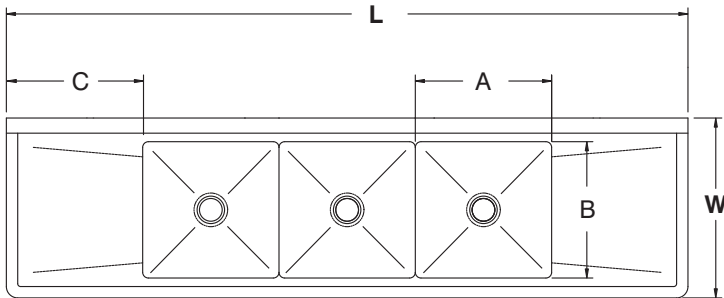
TEXAS
 Fax: (972) 932-4795

NEVADA
 Fax: (775) 972-1578

DIMENSIONS and SPECIFICATIONS

TOL Overall: ± .500" Interior: ± .250"

ALL DIMENSIONS ARE TYPICAL



ACCESSORIES	Model #	Qty
DRAINS		
FAUCETS		

MODEL #	Length L	Width W	Bowl Size A & B	Bowl Depth	Drbd. Length C	# of Drbrds.	Drbd. Location	Wt
FE-1-1515-X	20.25"	20.75"	15" x 15"	12"	N/A	0	None	38 lbs.
FE-1-1812-X	23"	23.75"	18" x 18"	12"	N/A	0	None	42 lbs.
FE1-1812-18RorL-X	38 1/2"	23.75"	18" x 18"	12"	18"	1	R or L	57 lbs.
FE1-1812-18RL-X	54"	23.75"	18" x 18"	12"	18"	2	R & L	65 lbs.
FE-1-1824-X	23"	29.75"	18" x 24"	14"	N/A	0	None	60 lbs.
FE-1-1824-24RorL-X	45"	29.75"	18" x 24"	14"	24"	1	R or L	105 lbs.
FE-1-2424-X	29"	29.75"	24" x 24"	12"	N/A	0	None	90 lbs.
FE-2-1812-X	41"	23.75"	18" x 18"	12"	N/A	0	None	65 lbs.
FE2-1812-18RLX	72"	23.75"	18" x 18"	12"	18"	2	R & L	84 lbs.
FE-3-1515-PX	50"	20.75"	15" x 15"	12"	N/A	0	None	95 lbs.
FE-3-1515-15RorLX	62.5"	20.75"	15" x 15"	12"	15"	1	R or L	105 lbs.
FE-3-1515-15RL-X	75"	20.75"	15" x 15"	12"	15"	2	R & L	115 lbs.
FE-3-1620-18RorLX	68.5"	25.75"	16" x 20"	12"	18"	1	R or L	140 lbs.
FE3-1620-18RLX	84"	25.75"	16" x 20"	12"	18"	2	R & L	105 lbs.
FE-3-1812-X	59"	23.75"	18" x 18"	12"	N/A	0	None	90 lbs.
FE-3-1812-18RorL-X	74 1/2"	23.75"	18" x 18"	12"	18"	1	R or L	102 lbs.
FE3-1812-18RLX	90"	23.75"	18" x 18"	12"	18"	2	R & L	110 lbs.
FE-3-1824-24RorLX	80.5"	29.75"	18" x 24"	14"	24"	1	R or L	150 lbs.
FE-3-1824-24RLX	102"	29.75"	18" x 24"	14"	24"	2	R & L	250 lbs.
FE-3-2414-24RLX*	120"	29.75"	24" x 24"	14"	24"	2	R & L	300 lbs.

* Requires Two Faucets

SPACESAVER

MODEL #	Length L	Width W	Bowl Size A & B	Bowl Depth	Drbd. Length C	# of Drbrds.	Drbd. Location	Wt
FE-3-1014-15RLX ¹	60"	19.75"	10" x 14"	10"	15"	2	R & L	85 lbs.
FE-3-1416-12RLX	66"	21.75"	14" x 16"	12"	12"	2	R & L	130 lbs.

¹10" Deep Bowls

